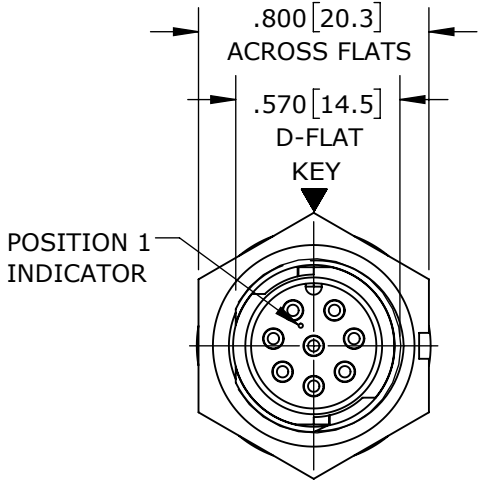
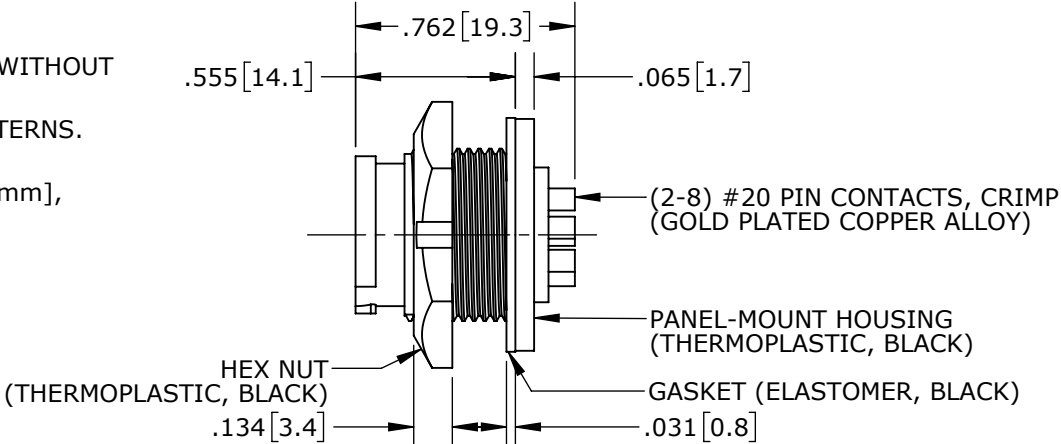


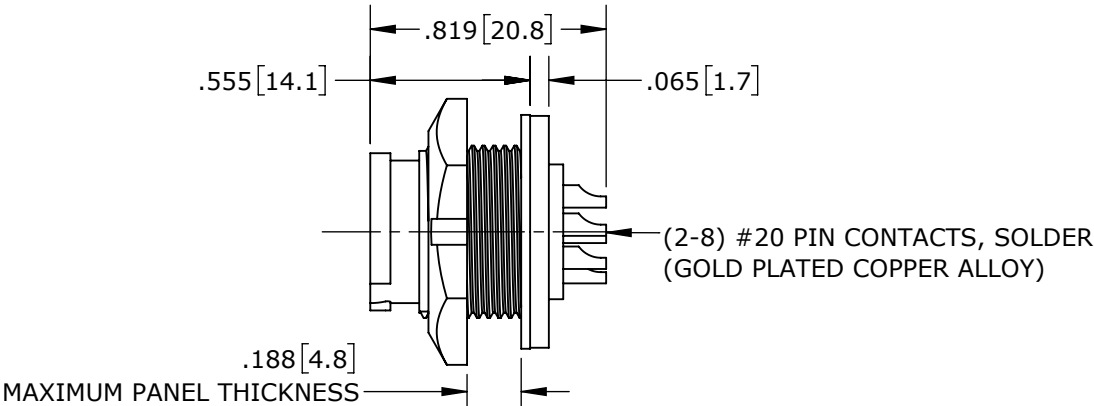
- NOTES:
- 1. CRIMP CONTACTS SUPPLIED UNASSEMBLED AND WITHOUT EPOXY BACKING.
 - 2. REFER TO DRAWING HPMISTD FOR CONTACT PATTERNS.
 - 3. HEX-NUT TORQUE: 8-10 IN-LB.
 - 4. DIMENSIONS ARE REFERENCE ONLY, IN INCHES [mm], WITHIN ±0.015 UNLESS OTHERWISE NOTED.



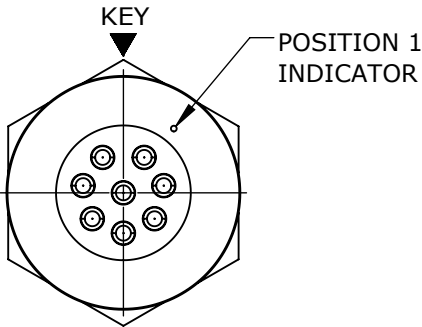
MATING FACE
W7282-8PG-P-300 SHOWN



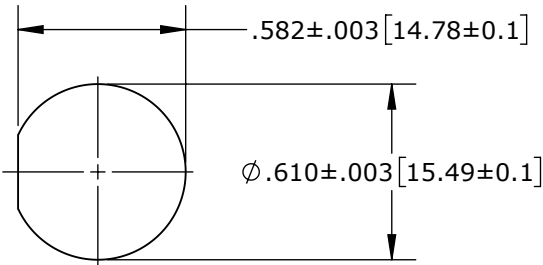
CRIMP CONTACTS (SHOWN ASSEMBLED)
W7280-8PG-P-300 SHOWN



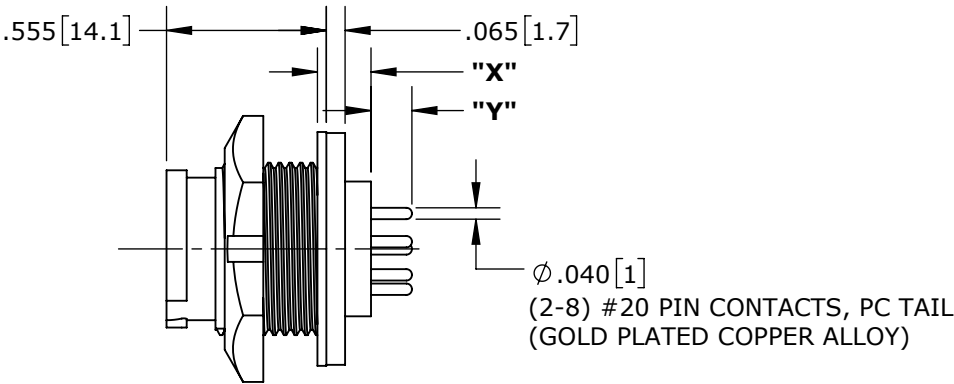
SOLDER CONTACTS
W7282-8PG-P-300 SHOWN



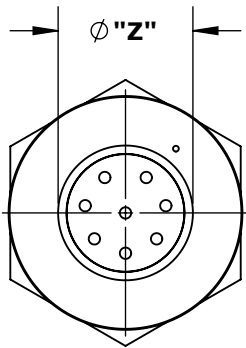
WIRING END
W7282-8PG-P-300 SHOWN



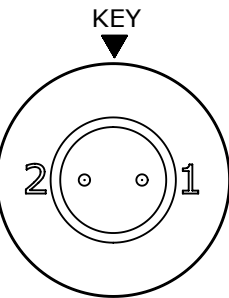
RECOMMENDED PANEL CUTOUT



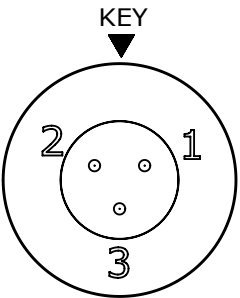
PC TAIL CONTACTS
W7281-8PG-P-3ES SHOWN



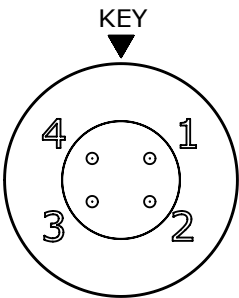
WIRING END
W7281-8PG-P-3ES SHOWN



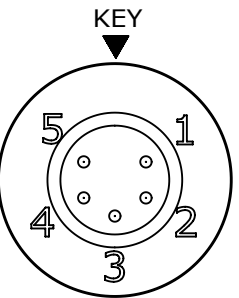
W7281-2PG-P-3ES



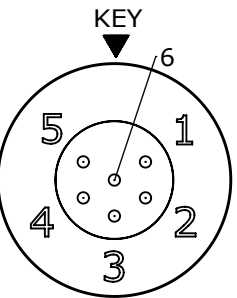
W7281-3PG-P-3ES



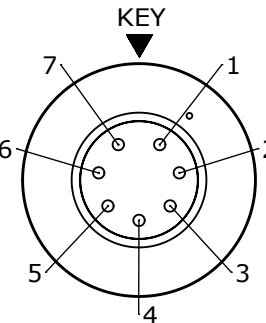
W7281-4PG-P-3ES



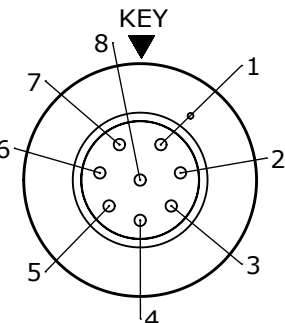
W7281-5PG-P-3ES



W7281-6PG-P-3ES



W7281-7PG-P-3ES



W7281-8PG-P-3ES

CONTACT ARRANGEMENTS (WIRING END SHOWN)

PANEL-MOUNT CONNECTOR PART NUMBERS:

W 7 2 8 X - X P G - P - 3XX

CONTACTS STYLE:
0 = CRIMP
2 = SOLDER
1 = PC TAIL

OF CONTACTS:
2-8 #20 PINS

EPOXY BACKING:
3ES = WITH EPOXY
300 = WITHOUT EPOXY

CUSTOMER APPROVAL

THIS DOCUMENT CONTAINS CONFIDENTIAL INFORMATION PROPRIETARY TO CONXALL CORPORATION. ANY REPRODUCTION, DISCLOSURE, OR USE OF THIS DOCUMENT /INFORMATION IS EXPRESSLY PROHIBITED UNLESS AUTHORIZED IN WRITING BY CONXALL CORPORATION.

APPROVED BY: _____

DATE: _____

PC CONTACT CONNECTORS DIMENSIONING:

PART NUMBER	"X"	"Y"	"Z"
W7281-2PG-P-300	.126 [3.2]	.191 [4.9]	.372 [9.4]
W7281-3PG-P-300	.143 [3.6]	.174 [4.4]	.410 [10.4]
W7281-4PG-P-300			
W7281-5PG-P-300			
W7281-6PG-P-300	.146 [3.6]	.171 [4.3]	.468 [11.9]
W7281-7PG-P-300			
W7281-8PG-P-300	.184 [4.7]	.137 [3.5]	.435 [11]
W7281-2PG-P-3ES	.143 [3.6]	.174 [4.4]	.410 [10.4]
W7281-3PG-P-3ES			
W7281-4PG-P-3ES			
W7281-5PG-P-3ES	.186 [4.7]	.147 [3.7]	.468 [11.9]
W7281-6PG-P-3ES	.143 [3.6]	.174 [4.4]	.410 [10.4]
W7281-7PG-P-3ES	.186 [4.7]	.142 [3.6]	.468 [11.9]
W7281-8PG-P-3ES			

0A	PNK	01-12-18	PDR16014
REV.	INIT.	DATE	DESCRIPTION
ALL INFORMATION ILLUSTRATED IS THE PROPERTY OF CONXALL CORPORATION. UNAUTHORIZED DUPLICATION OR DISTRIBUTION OF THIS DOCUMENT IS PROHIBITED.			ORIG. DRAWN BY: PNK DATE: 01-12-18
ALL UNITS ARE IN FEET, INCHES, FRACTION OF INCHES AND DECIMALS.			CHECKED BY:
= CRITICAL CHARACTERISTIC FLAG PER SPEC. XXXX			APPROVED BY:
FILE: W728X-XPG-P-3XX_CD			DIRECTORY: SLW
SCALE: NTS			SIZE: B
SHEET: 1 OF 1			TITLE: PANEL-MOUNT CONNECTOR 2-8 #20 PIN CONTACTS INSTA-CLICK™ MINI-CON-X STANDARD PRODUCT
PART NUMBER: W728X-XPG-P-3XX			REV 0A

RoHS COMPLIANT