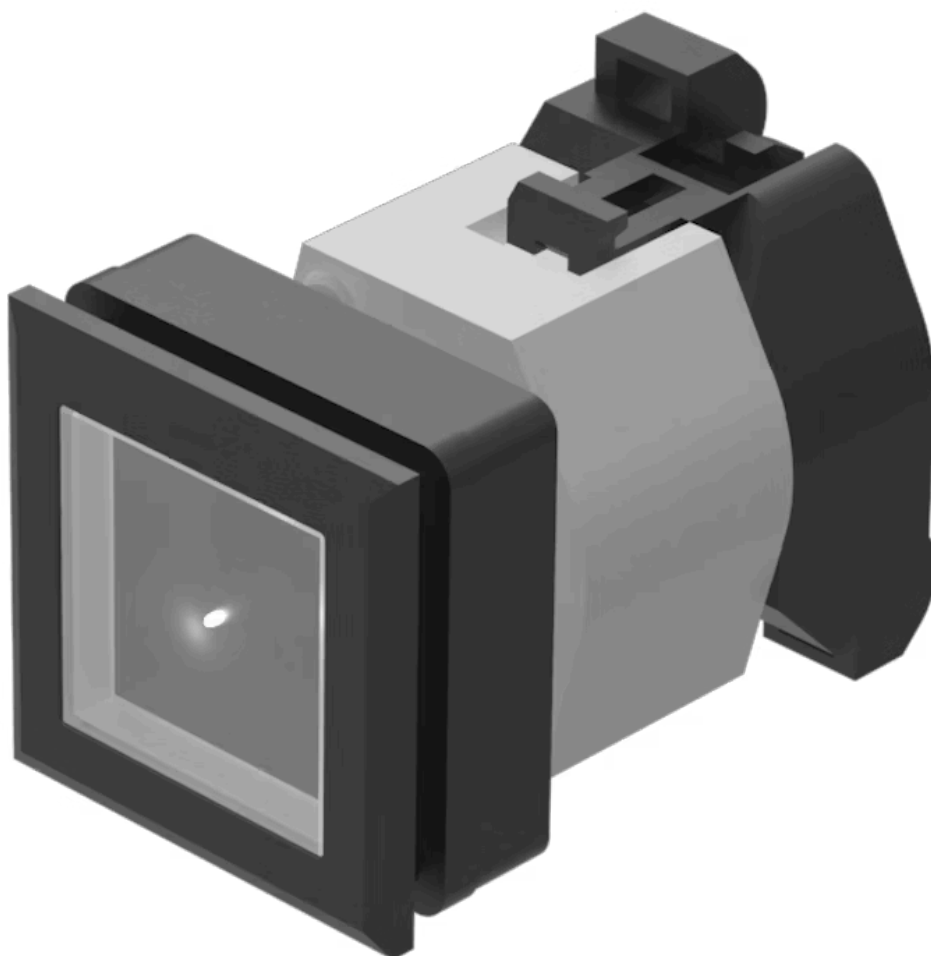


Actuator

704.229.700



<https://eao.com/p/704.229.700>

Your product:



704.229.700 Actuator

FRONT

Front bezel colour:	Black
Front bezel material:	Plastic
Front form:	square
Front dimension:	35 mm x 35 mm

MOUNTING

Mounting cut-out:	30 mm x 30 mm
Design:	flush

OPERATING-/INDICATION PART

Lens shape:	flush
Lens optics:	transparent
Lens illumination:	illuminative
Lens material:	Plastic
Lens colour:	Colourless

ELECTRICAL CHARACTERISTICS

Standards:	The switches comply with the "Standards for low-voltage switching devices" DIN EN 60947-1
------------	---

MECHANICAL CHARACTERISTIC

Weight:	0.051 kg
Switching action:	Momentary

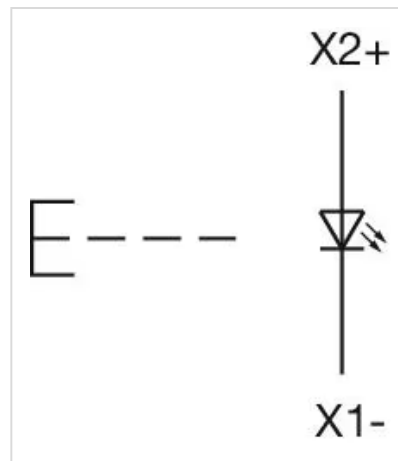
Operating force:	6.2 N
Operating Travel:	ca. 5.8 mm ± 0.2 mm
Mechanical lifetime:	≤3 Mio. cycles of operation
Terminal:	Screw terminal

AMBIENT CONDITION

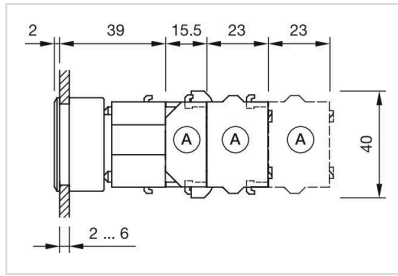
IP Protection:	IP65 front side
Operating temperature:	– 40 °C ... + 55 °C
Storage temperature:	– 40 °C ... + 85 °C

OTHER

Hints:	Max. 3 switching elements can be clipped on, The lamp block will be delivered with screw terminal
max. number of switching elements:	3
Housing material:	Plastic
Housing colour:	Black
Short Description:	Actuator, 30 mm x 30 mm, 35 mm x 35 mm, flush, illuminative, Colourless, Plastic, transparent, square, Black, Plastic, Momentary, Screw terminal
Wiring diagrams:	

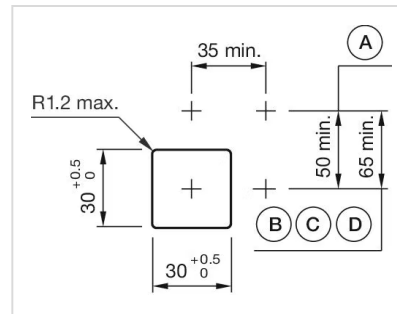


Dimension drawings:



A = Screw terminal

Mounting cut-outs:



A = Screw terminal

B = Push-in terminal (PIT)

C = Plug-in terminal 6.3 mm x 0.8 mm

D = Double plug-in terminal 6.3 mm x 0.8 mm