

Actuator

704.103.018I



<https://eao.com/p/704.103.018I>

Your product:



704.103.018I Actuator

FRONT

Front bezel material:	Aluminium
Front bezel colour:	Nature
Front dimension:	Ø 35 mm

MOUNTING

Design:	flush
Mounting cut-out:	Ø 30.5 mm

OPERATING-/INDICATION PART

Lever material:	plastic
Lever shape:	long
Lever colour:	Black

ELECTRICAL CHARACTERISTICS

Standards:	The switches comply with the "Standards for low-voltage switching devices" DIN EN 60947-1
------------	-------------------------------------------------------------------------------------------

MECHANICAL CHARACTERISTIC

Switching action:	Rest - Momentary
Switching angle:	42° right
Weight:	0.056 kg
Mechanical lifetime:	≤2.5 Mio. cycles of operation
Switching positions:	2 positions

AMBIENT CONDITION

Storage temperature:	– 40 °C ... + 85 °C
IP Protection:	IP65 front side
Operating temperature:	– 40 °C ... + 55 °C

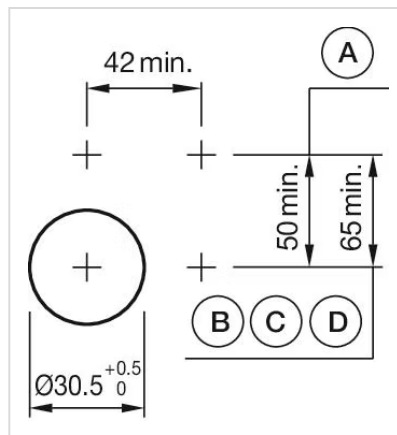
OTHER

max. number of switching elements:	3
-------------------------------------------	---

Short Description:	Actuator, Ø 30.5 mm, Ø 35 mm, optional illuminative, Black, long, Nature, Aluminium, anodised, Rest - Momentary
---------------------------	-----------------------------------------------------------------------------------------------------------------

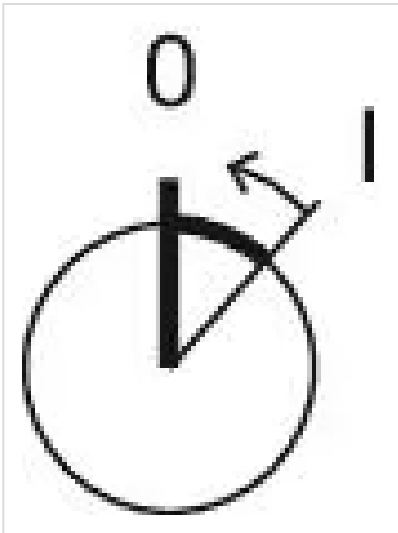
Hints:	Max. 3 switching elements can be clipped on
---------------	---------------------------------------------

Mounting cut-outs:

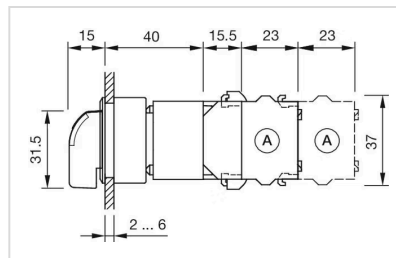


A = Screw terminal
B = Push-in terminal (PIT)
C = Plug-in terminal 6.3 mm x 0.8 mm
D = Double plug-in terminal 6.3 mm x 0.8 mm

Switching positions:	
-----------------------------	--



Dimension drawings:



A = Screw terminal

Wiring diagrams:

