

DESCRIPTION: M12 FEMALE - PANEL MOUNT (REAR) - SOLDER CUP - 4 POS.

NOTE:

MATERIAL

HOUSING:

PBT UL94V-0, BLACK

CONTACT:

BRASS

NUT:

BRASS

O-RING B:

EPDM, BLACK

FINISH

CONTACT:

GOLD PLATED
OVER 50u" NICKEL
NICKEL PLATED
60u" TO 100u" OVER ALL

NUT:

ELECTRICAL

RATED CURRENT:

4A

RATED VOLTAGE:

250V

INSULATION RESISTANCE:

100 MΩhms MIN.

CONTACT RESISTANCE:

10 mΩhms MAX.

WATER PROOF:

IP67

ENVIRONMENT

OPERATION TEMPERATURE:

-40°C TO +85°C

MAX WIRE AWG:

22

859-004-203R00Y

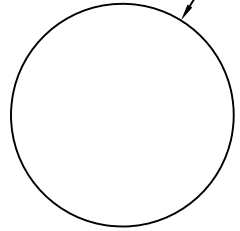
3 = BRASS/NICKEL SHELL & NUT

S = STAINLESS STEEL SHELL & NUT

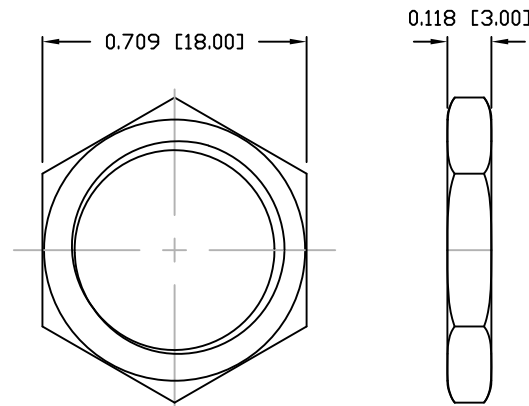
1 = GOLD FLASH

4 = 10u" GOLD

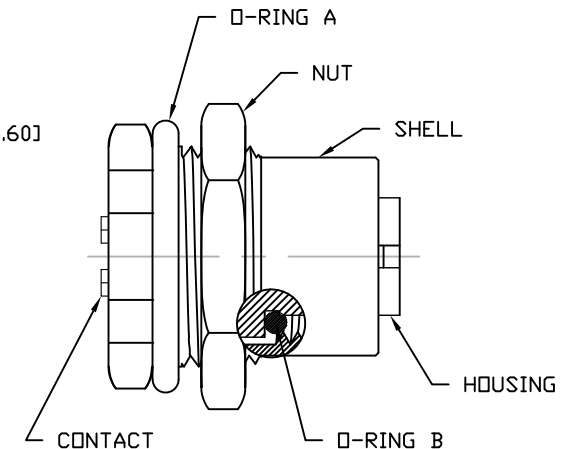
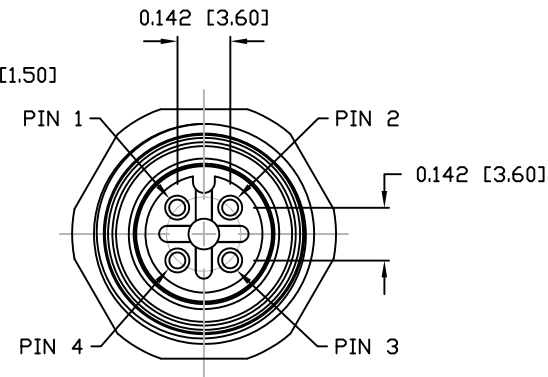
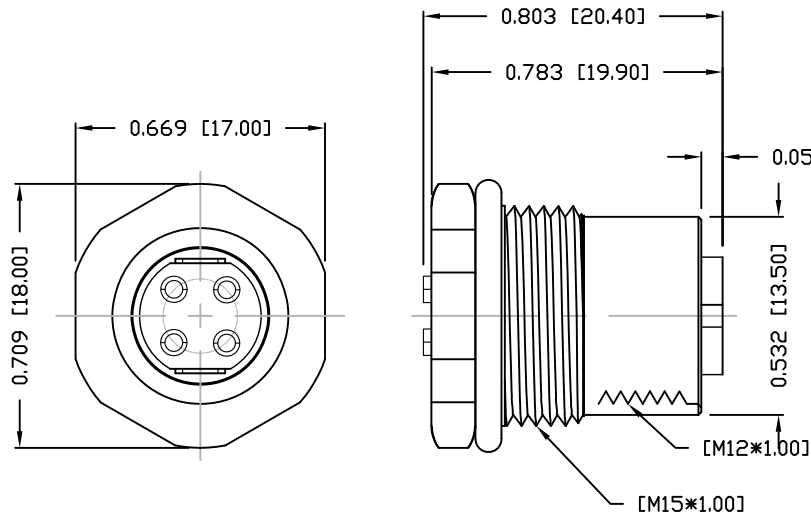
Ø0.594 [Ø15.10]
+0.004 -0.000
[+0.10 -0.00]



PANEL CUTOUT



NUT



RoHS COMPLIANT

UNITS = INCHES [MM]

DO NOT SCALE FROM DRAWING



THESE DRAWINGS AND SPECIFICATIONS ARE THE PROPERTY OF NorComp AND SHALL NOT BE REPRODUCED, COPIED OR USED AS THE BASIS FOR THE MANUFACTURE OR SALE OF APPARATUS WITHOUT WRITTEN PERMISSION.

DRAWN:

M. SIGMON

DATE:

03-07-16

NorComp

SCALE:

NTS

SHEET

OF

1

1

REV

3

DWG NO.

859-004-203R00Y