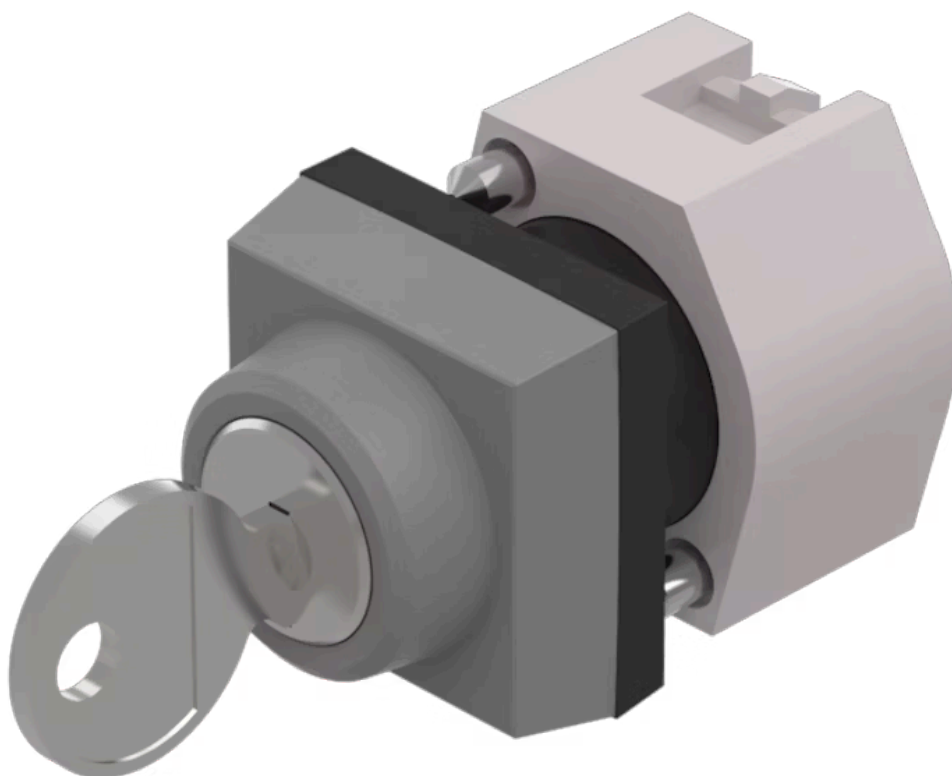


# Actuator

704.343.0



<https://eao.com/p/704.343.0>

Your product:

---



## 704.343.0 Actuator

### FRONT

Front bezel colour:	Grey
Front dimension:	30 mm x 30 mm
Front bezel material:	Plastic

### MOUNTING

Design:	raised
---------	--------

### ELECTRICAL CHARACTERISTICS

Standards:	The switches comply with the "Standards for low-voltage switching devices" DIN EN 60947-1
------------	---

### MECHANICAL CHARACTERISTIC

Switching positions:	2 positions
Mechanical lifetime:	≤50 000 cycles of operation
Switching action:	Rest (a) - Momentary
Weight:	0.07 kg
Switching angle:	42° right

### AMBIENT CONDITION

Operating temperature:	– 40 °C ... + 55 °C
Storage temperature:	– 40 °C ... + 85 °C
IP Protection:	IP65 front side

## OTHER

### Hints:

The standard lock Ronis 251, Further lock numbers on request, Max. 3 switching elements can be clipped on

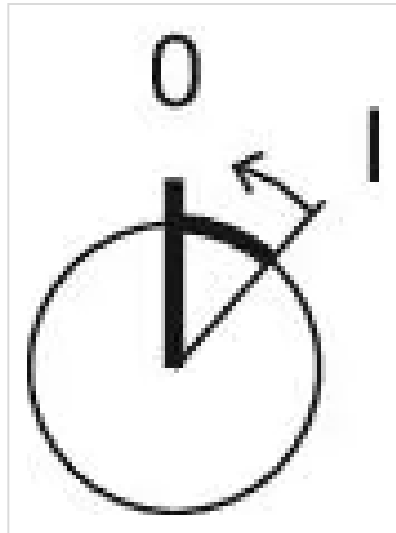
### Short Description:

Actuator, 30 mm x 30 mm, Grey, Plastic, Rest (a) - Momentary

### max. number of switching elements:

3

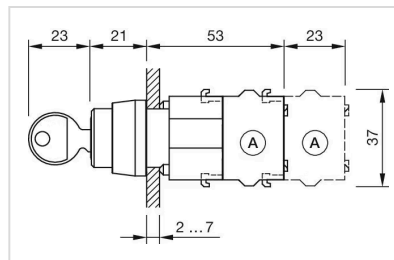
### Switching positions:



### Wiring diagrams:

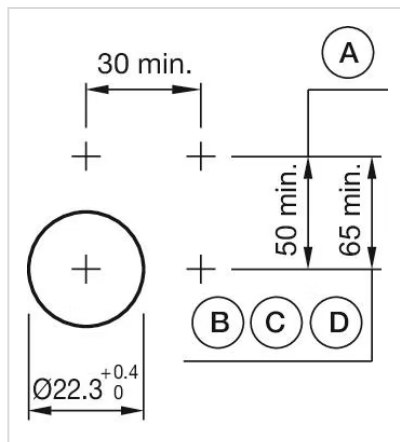


### Dimension drawings:



A = Screw terminal

### Mounting cut-outs:



- A = Screw terminal
- B = Push-in terminal (PIT)
- C = Plug-in terminal 6.3 mm x 0.8 mm
- D = Double plug-in terminal 6.3 mm x 0.8 mm