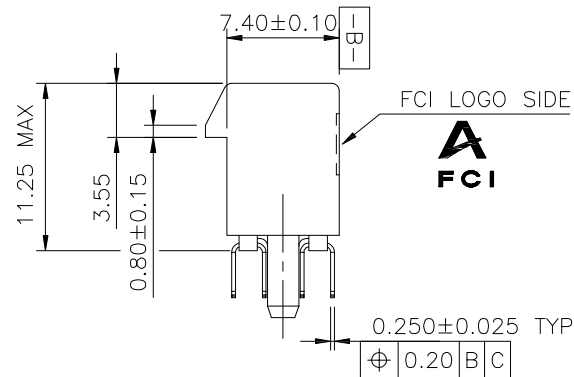
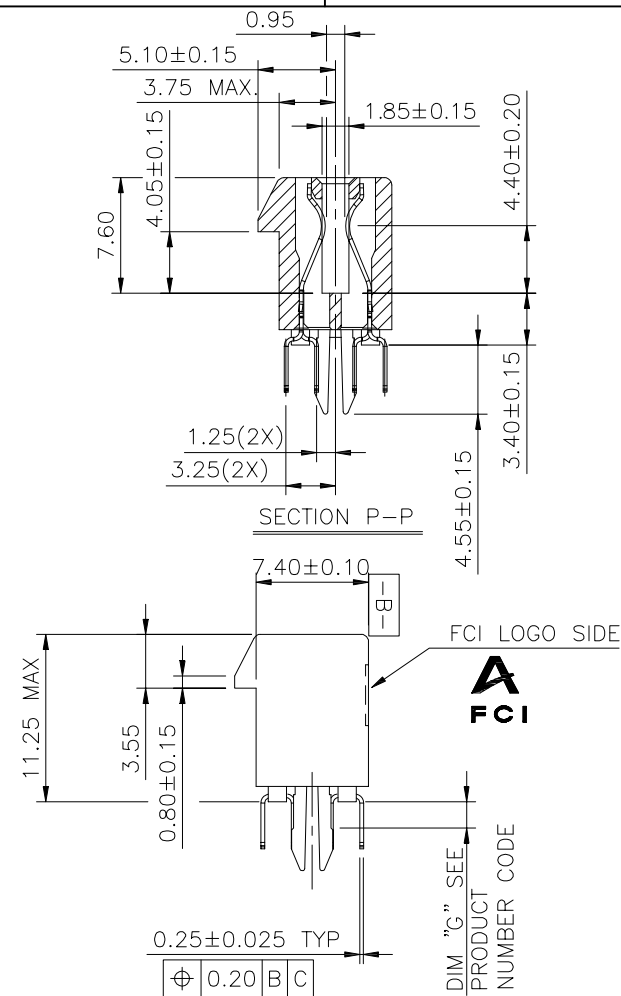
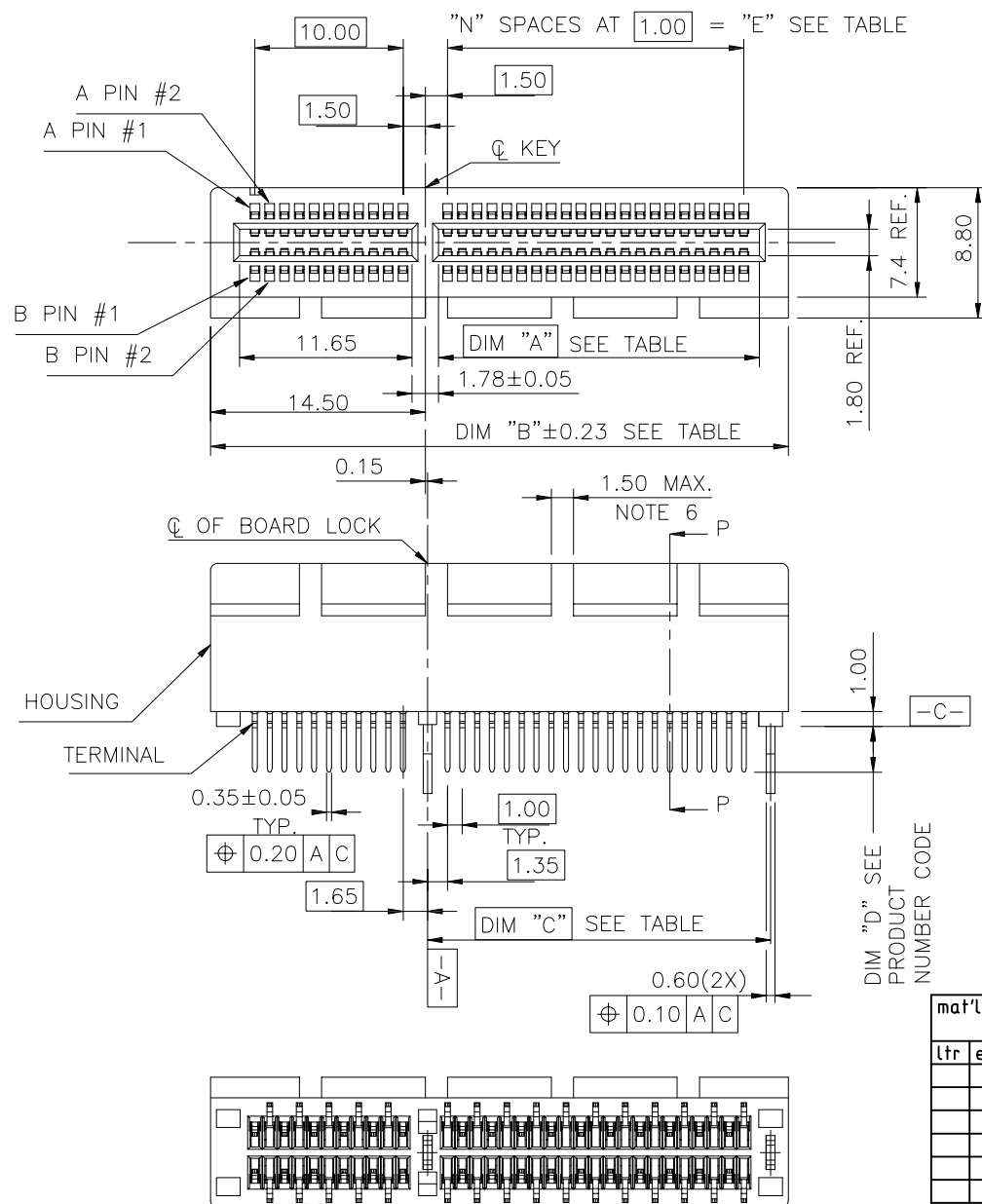


SECTION P-P



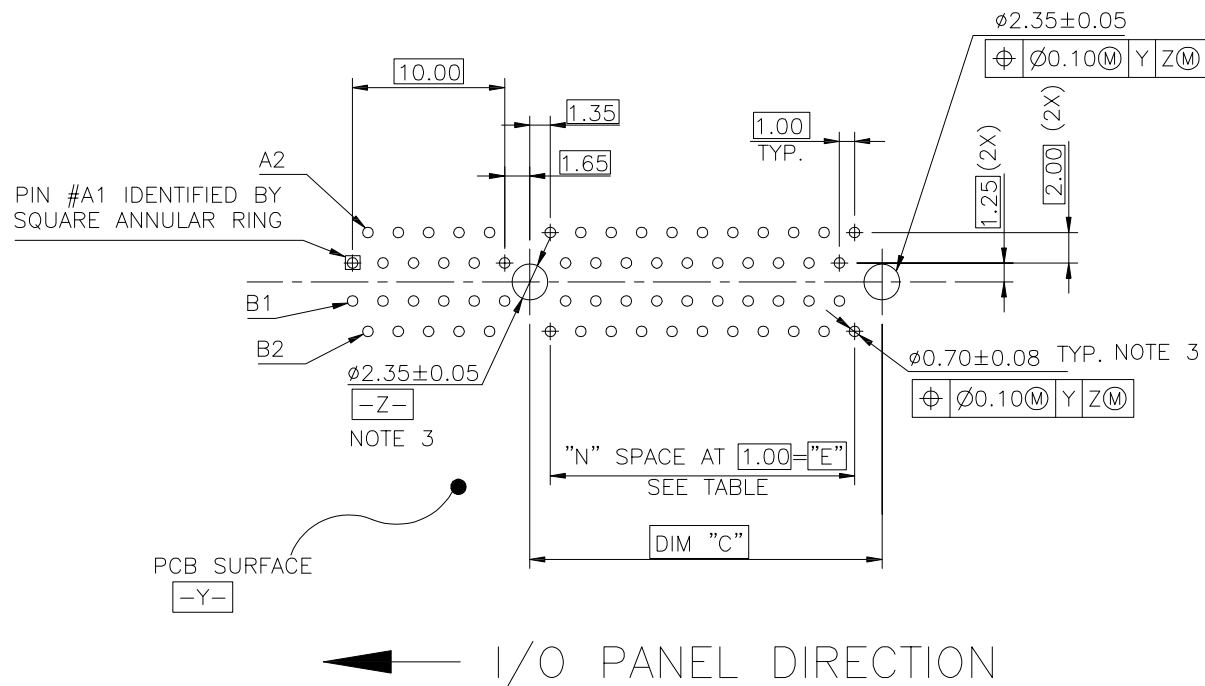
PLASTIC PEG TYPE

mat'l. code				surface		tolerance		projection		product family			
-				-		ASME_Y14.5				PCI_EXPRESS			
tolerances unless otherwise specified				angles		Linear		MM		title			
M	705-0124	M	W	06/07/05			.0±.30			PCI_EXPRESS_CARD_EDGE_GEN3			
N	705-0153	M	W	07/12/05			.00±.20			TH_ASS'Y			
P	705-0208	M	W	09/15/05	±.2°		.000±.0.10	scale N/A					
R	706-0206	R	C	12/01/06	dr	WINSTON_ZHU	20-10-12			dwg no		sheet 1 of 6	size
S	ELX-DG-2161-1	S	T	05/27/15	engr	ZHENHUA_LIU	20-10-12	Amphenol FCI		10018784		A4	
T	ELX-DG-38297	ZH		20/09/17	chr					type		CUSTOMER Drawing	
					appd	HEAVEN_CEN	20-10-12						
sheet index		revision sheet		T									



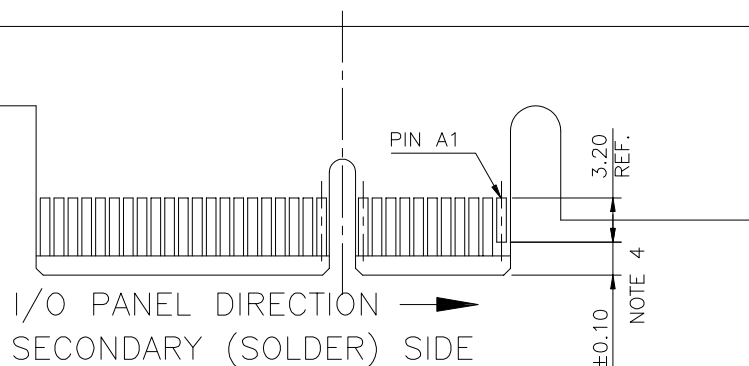
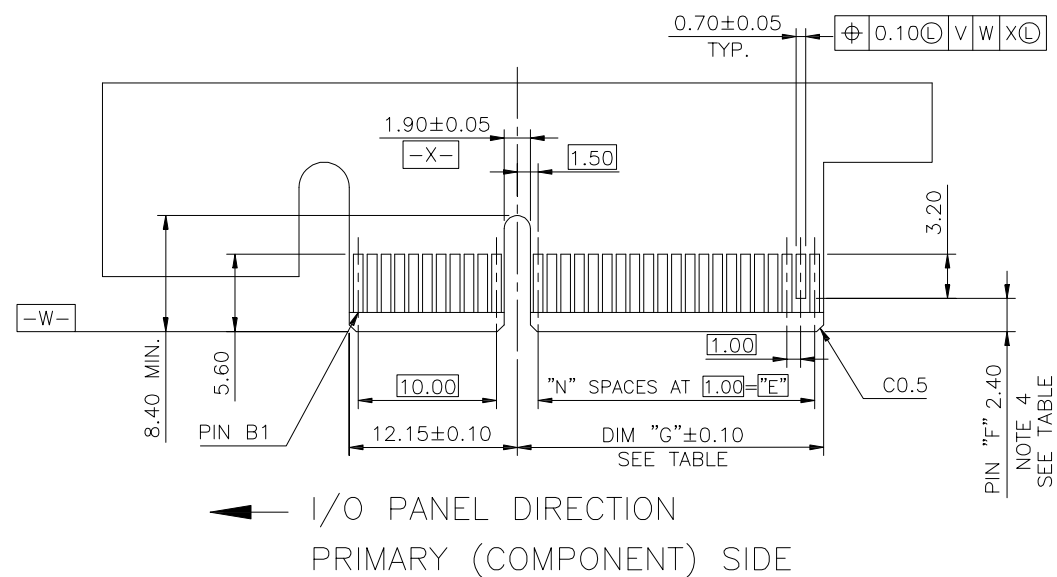
METAL BOARD LOCKS TYPE

mat'l. code				surface		tolerance		projection		product family			
-				-		ASME_Y14.5				PCI_EXPRESS			
ltr		ecn no		dr		date		tolerances unless otherwise specified		title			
								angles		PCI_EXPRESS_CARD_EDGE_GEN3			
								linear		TH_ASS'Y			
								.0±0.30					
								.00±0.20					
								±2°					
								.000±0.10					
								scale N/A					
										dwg no		sheet 2 of 6	size
										10018784		A4	
										type		CUSTOMER Drawing	
sheet index		revision sheet		T									

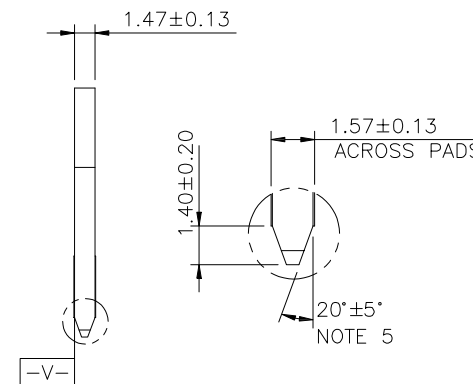


RECOMMENDED FOOTPRINT

[illegible]



#	POS	REF.	N	DIM "G"	"F"
36			6	8.15	B17
64			20	22.15	B31
98			37	39.15	B48
164			70	72.15	B81



SCALE 2:1

ADD-IN CARD EDGE-FINGER DIMENSIONS

mat'l. code -				surface - ✓	tolerance ASME_Y14.5	projection ⊕	product family PCI_EXPRESS	
ltr	ecn no	dr	date	tolerances unless otherwise specified		MM	title PCI_EXPRESS_CARD_EDGE_GEN3 TH_ASS'Y	
				angles	.0±0.30	scale N/A	dwg no 10018784	sheet 4 of 6 size A4
				linear	.00±0.20			
				±2°	.000±0.10			
				dr	WINSTON_ZHU 20-10-12	Amphenol FCI	type CUSTOMER Drawing	
				engr	ZHENHUA_LIU 20-10-12			
				chr	HEAVEN_CEN 20-10-12			
				appd				
sheet index	revision sheet	T						

NOTES:

1.MATERIAL:

HOUSING: NYLON, GLASS FILLED UL94V-0 RATE, SUITABLE FOR WAVE SOLDERING.

TERMINAL: COPPER ALLOY

PLATING: 50u" NICKEL UNDERPLATE ALL OVER
CONTACT AREA PLATING - SEE PRODUCT NUMBER CODE
SOLDER TAIL: TIN/LEAD (90/10) - SEE PRODUCT
NUMBER CODE 100u" MIN. OVER 50u" NICKEL

METAL BOARD LOCKS: COPPER ALLOY
FINISH: 100u" TIN/LEAD (90/10) OVER 50u" NICKEL
UNDERPLATE SEE PRODUCT NUMBER CODE

2.PRODUCT SPECIFICATION: GS-12-233

③THE HORIZONTAL AXIS FOR THE HOLE PATTERN IS ESTABLISHED BY
A LINE THROUGH THE CENTER OF THE TWO Ø2.35 HOLES.
THE VERTICAL AXIS IS 90° TO THE HORIZONTAL AXIS, THROUGH THE CENTER
OF DATUM Z.

④NO TIE BAR PERMITTED FROM CARD EDGE TO LEADING EDGE OF PAD FOR
PINS A1 AND PIN NUMBERS "F".

⑤CHAMFER EDGES MUST BE FREE OF CUTTING BURRS.

⑥FREQUENCY & LOCATION AT SUPPLIER DISCRETION. RIDGE MAY BE
CONTINUOUS WITH NO BREAKS.

7.RoHS COMPATIBLE PRODUCT SPECIFICATIONS

a - PLATING:

- "LF" MEANS THE PRODUCT IS LEAD-FREE, 2um MINIMUM MATTE TIN OVER 1.27um
MINIMUM NICKEL UNDERPLATE.

b - MANUFACTURING PROCESS COMPATIBILITY

- THE HOUSING WILL WITHSTAND EXPOSURE TO 260°C±5°C SOLDER BATH TEMPERATURE FOR
5 SECONDS IN A WAVE SOLDER APPLICATION WITH A 1.6mm MIN THICK CIRCUIT BOARD.
- THE HOUSING WILL WITHSTAND EXPOSURE TO 240°C±5°C SOLDER BATH TEMPERATURE FOR
5 SECONDS IN A WAVE SOLDER APPLICATION WITH A 1.6mm MIN THICK CIRCUIT BOARD.(For 10018784-X 0 X X X X(X X) options)

CONNECTOR	# POS REF.	N	DIM "A"	DIM "B"	DIM "C"	"E"
1 PORT	36	6	7.65	25.00	9.15	6.00
4 PORT	64	20	21.65	39.00	23.15	20.00
8 PORT	98	37	38.65	56.00	40.15	37.00
16 PORT	164	70	71.65	89.00	73.15	70.00

PRODUCT NUMBER CODE
10018784-X X X X X X □ □

HOUSING COLOR OPTIONS

0-WHITE
1-BLACK

LEAD FREE OPTION

LEAVE BLANK FOR TERMINAL PLATING 3,4,5
"LF" FOR TERMINAL PLATING OPTION 0,1,2

PEGS OPTIONS

0-PLASTIC PEGS
1-METAL BOARD LOCKS

POS OPTIONS

0-36
1-64
2-98
3-164

PACKAGING OPTIONS

T-TRAY PACKAGING
M-TRAY PACKAGING & MYLAR TAPE FOR PICK-N-PLACE. SEE FIGURE 1
R-TAPE & REEL PACKAGING (FOR 36, 64, 98P)
A-TAPE & REEL PACKAGING WITH MYLAR (FOR 36, 64, 98P)

TERMINAL PLATING OPTIONS

0-50u" Ni UNDERPLATE
30u" Au CONTACT AREA
100u" TIN TAIL AREA ----- COMPATIBLE RoHS

1-50u" Ni UNDERPLATE
15u" Au CONTACT AREA
100u" TIN TAIL AREA ----- COMPATIBLE RoHS

2-50u" Ni UNDERPLATE
GOLD FLASH CONTACT AREA
100u" TIN TAIL AREA ----- COMPATIBLE RoHS

3-50u" Ni UNDERPLATE
30u" Au CONTACT AREA
100u" TIN/LEAD TAIL AREA ----- INCOMPLIANT RoHS

4-50u" Ni UNDERPLATE
15u" Au CONTACT AREA
100u" TIN/LEAD TAIL AREA ----- INCOMPLIANT RoHS

5-50u" Ni UNDERPLATE
GOLD FLASH CONTACT AREA
100u" TIN/LEAD TAIL AREA ----- INCOMPLIANT RoHS

	DIM "D"	PCB THICKNESS	BOARD LOCKS DIM"G"
0	2.30 ± 0.25 0.13	1.56±0.10	1.70±0.15
1	3.10 ± 0.25 0.13	2.36±0.10	2.50±0.15

TAIL LENGTH OPTIONS

mat'l. code -				surface - ✓	tolerance ASME_Y14.5	projection ⊕	product family PCI_EXPRESS
ltr	ecn no	dr	date	tolerances unless otherwise specified		MM	title
				angles	linear .0±0.30 ±.00±0.20 ±.000±0.10	scale N/A	PCI_EXPRESS_CARD_EDGE_GEN3 TH_ASS'Y
				dr	WINSTON_ZHU 20-10-12	Amphenol FCI	dwg no
				engr	ZHENHUA_LIU 20-10-12		sheet 5 of 6
				chr	HEAVEN_CEN 20-10-12		size
sheet index	revision sheet	T					10018784
							A4
							type
							CUSTOMER Drawing

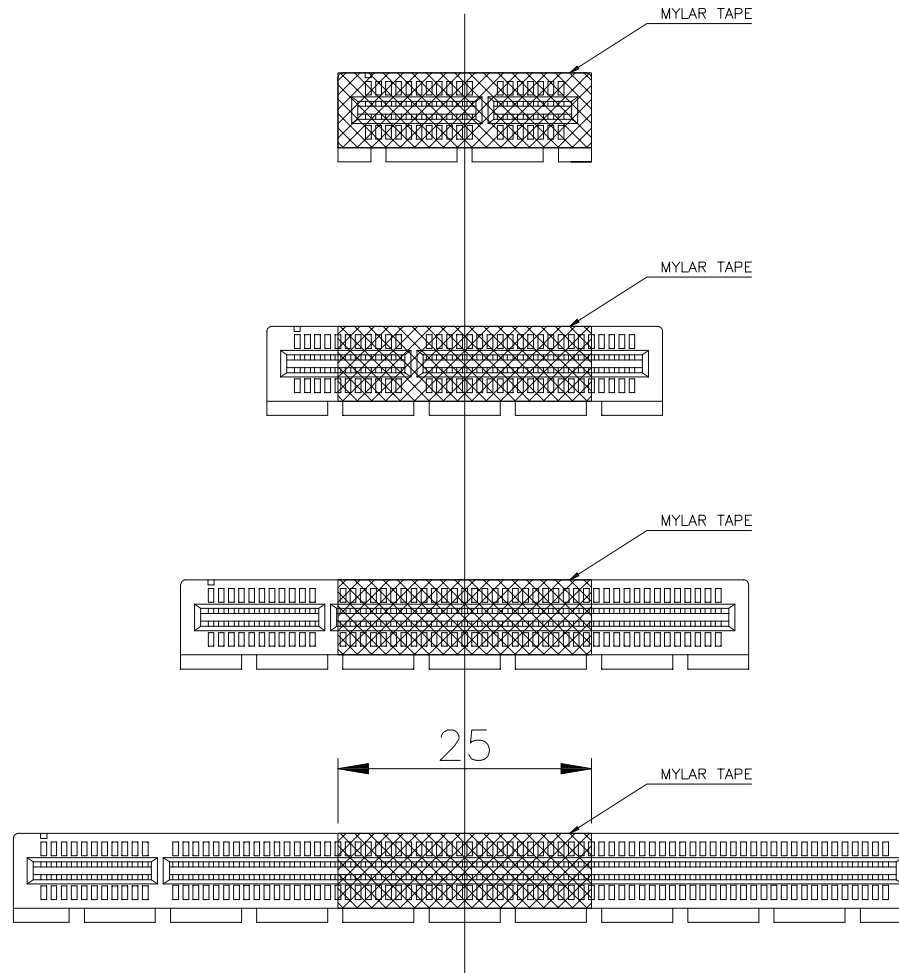


FIGURE 1

mat'l. code					surface		tolerance		projection		product family			
-					-		ASME_Y14.5				PCI_EXPRESS			
ltr	ecn	no	dr	date	tolerances unless otherwise specified					title				
					angles	Linear	.0±0.30				PCI_EXPRESS_CARD_EDGE_GEN3			
							.00±0.20				TH_ASS'Y			
					±2'		.000±0.10				scale N/A			
					dr	WINSTON_ZHU	20-10-12			Amphenol FCI	dwg no		sheet 6 of 6	size
					engr	ZHENHUA_LIU	20-10-12				10018784		A4	
					chr									
					appd	HEAVEN_CEN	20-10-12				type CUSTOMER Drawing			
sheet index		revision sheet		T										