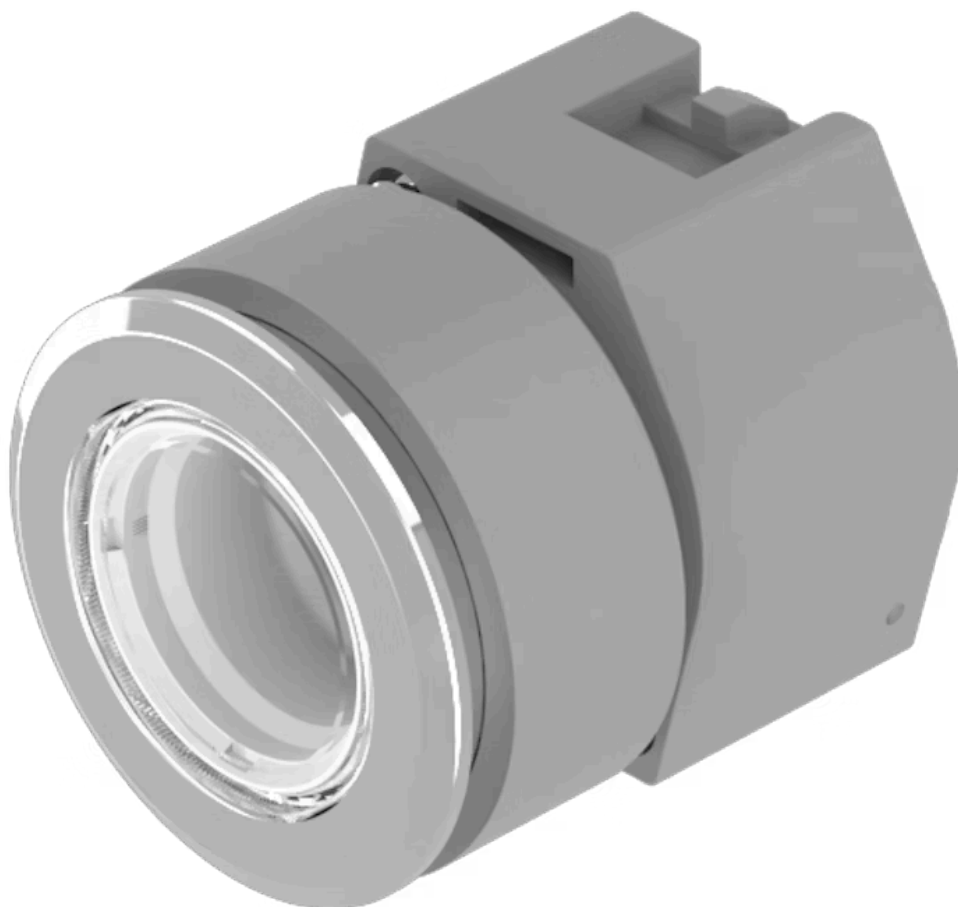


Actuator

704.042.718



<https://eao.com/p/704.042.718>

Your product:



704.042.718 Actuator

FRONT

Front bezel material:	Aluminium
Front dimension:	Ø 35 mm
Front form:	round
Front bezel colour:	Nature

MOUNTING

Mounting cut-out:	Ø 30.5 mm
Design:	flush

OPERATING-/INDICATION PART

Lens optics:	transparent
Lens material:	Plastic
Lens illumination:	non illuminative
Lens colour:	Colourless
Lens shape:	flush

ELECTRICAL CHARACTERISTICS

Standards:	The switches comply with the "Standards for low-voltage switching devices" DIN EN 60947-1
------------	---

MECHANICAL CHARACTERISTIC

Weight:	0.051 kg
Switching action:	Maintained

Operating force:	8 N
Mechanical lifetime:	≤3 Mio. cycles of operation
Operating Travel:	ca. 5.8 mm ± 0.2 mm

AMBIENT CONDITION

Storage temperature:	– 40 °C ... + 85 °C
IP Protection:	IP65 front side
Operating temperature:	– 40 °C ... + 55 °C

OTHER

max. number of switching elements:	3
---	---

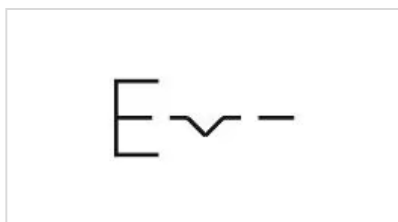
Hints: Max. 3 switching elements can be clipped on, The colour of anodised aluminium parts can vary due to technical production reasons

Short Description: Actuator, Ø 30.5 mm, Ø 35 mm, flush, non illuminative, Colourless, Plastic, transparent, round, Nature, Aluminium, anodised, Maintained

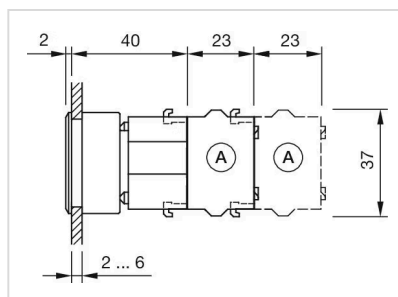
Housing colour: Grey

Housing material: Plastic

Wiring diagrams:

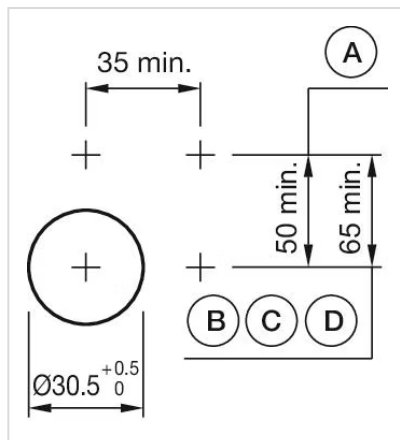


Dimension drawings:



A = Screw terminal

Mounting cut-outs:



- A = Screw terminal
- B = Push-in terminal (PIT)
- C = Plug-in terminal 6.3 mm x 0.8 mm
- D = Double plug-in terminal 6.3 mm x 0.8 mm