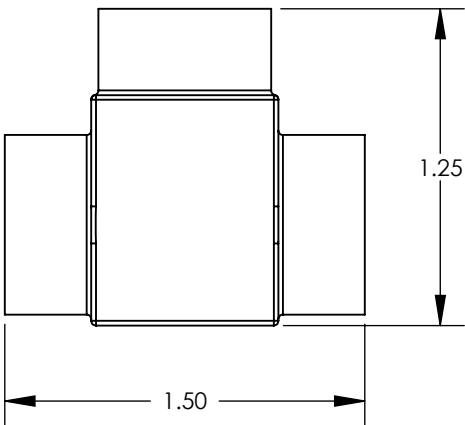
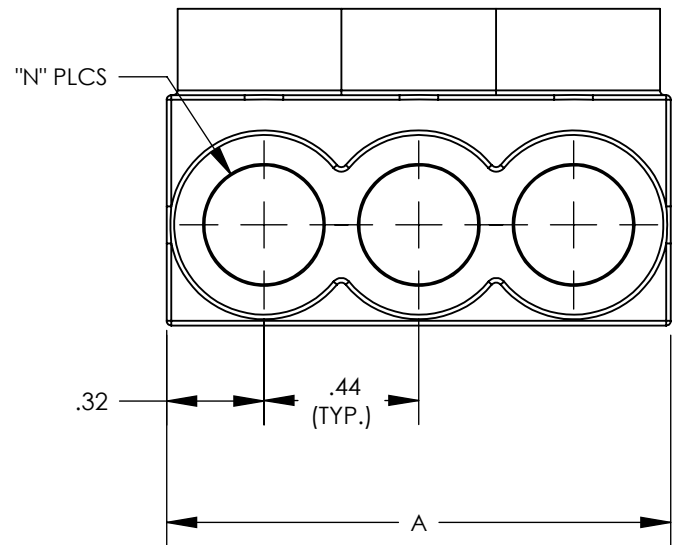


THREE PORT CONNECTOR BLOCK SHOWN WITH PLASTIC CLOSURE PLUGS REMOVED. SEE TABLE FOR DIMENSIONS OF PARTS WITH ADDITIONAL PORTS



PANDUIT PART NUMBER	CONDUCTOR RATING	HEX KEY	SCREW QUANTITY	CAP (SCREW PORT) QUANTITY	CAP (WIRE PORT) QUANTITY	A	L	N	TIGHTENING TORQUE
PCSB4-2-12Y	#4 - #14 STR #10 - #14 SOL	1/8"	2	2	4	1.08	0.83	2	#10 - #14 = 45 IN-LBS #4 - #8 = 50 IN-LBS
PCSB4-3-12Y			3	3	6	1.518	1.268	3	
PCSB4-4-6Y			4	4	8	1.956	1.706	4	
PCSB4-5-6Y			5	5	10	2.394	2.144	5	
PCSB4-6-6Y			6	6	12	2.832	2.582	6	
PCSB4-8-4Y			8	8	16	3.708	3.458	8	
PCSB4-10-4Y			10	10	20	4.584	4.334	10	
PCSB4-12-3Y			12	12	24	5.46	5.21	12	
PCSB4-14-2Y			14	14	28	6.336	6.086	14	



LISTED



CERTIFIED

- NOTES:
- UL486A-UL486B LISTED, DUAL RATED CU9AL FOR ALUMINUM OR COPPER CONDUCTORS. MEETS OR EXCEEDS ANSI C119.4
 - SEE TABLE FOR WIRE RANGE.
 - STRIP LENGTH: .56 +.06/-0
 - SEE PACKAGE LABEL FOR TIGHTENING TORQUE SPECIFICATIONS.
 - VOLTAGE RATING: 600 V. MAX. BUILDING WIRE, 1000 V. MAX. IN SIGNS & FIXTURES.
 - TEMPERATURE RATING: 90 °C (CU9AL).
 - CONNECTOR BLOCK BODY ARE MADE FROM ALUMINUM. CONDUCTOR PORTS IN CONNECTOR BLOCK ARE PREFILLED WITH AN OXIDE-INHIBITING COMPOUND.
 - CONNECTOR TO INCLUDE ZINC PLATED STEEL CLAMPING SCREWS FOR EACH CONDUCTOR PORT.
 - INSULATION MATERIAL IS CLEAR BLUE PVC.
 - CLAMPING SCREW ACCESS PORTS AND ALL WIRE ENTRY PORTS ARE PROVIDED WITH REMOVABLE PLASTIC CLOSURE PLUGS.
 - ALL DIMENSIONS SHOWN ARE NOMINAL.
 - ONLY ONE CONDUCTOR PER PORT ALLOWED.
 - PACKAGE QTY: -12 = 12 PCS.
-6 = 6 PCS.
-4 = 4 PCS.
 - THIS PART IS RoHS COMPLIANT

CLAMPING SCREW
ACCESS PORT (TYP.)

CONDUCTOR
PORT (TYP.)

							MULTI-TAP INSULATED CONNECTORS PCSB4 SERIES CUSTOMER DRAWING			
08	11/22	BARK	JHNU	MRWA	A. Revised insulation, clear blue PVC was clear PVC	127186	ITEM REVISION NAME		N41573BB-C41573/08	
07	6/19	JHNU	TMR	RGB	REVISED WIRE RANGE FORMAT REVISED TIGHTENING TORQUE	048653	DATASET FILE NAME		C41573 r08.SLDDRW	
06	1/16	JHNU	JHNU	RGB	REVISED DIM: .32 WAS .42, .44 WAS .67 REVISED A AND L DIM'S FOR ALL PART NUMBERS REVISED NOTE 2: .56 WAS .50 REVISED NOTE 8: ZINC PLATED STEEL WAS TIN PLATED ALUM. REVISED NOTE 4	N41573BB-C41573	UNLESS OTHERWISE SPECIFIED, DIMENSIONAL TOLERANCES ARE: IN [mm]		MATERIAL	
05	2/13	JHNU	JHNU	RGB	REVISED TITLE BLOCK	N41573BB-C41573	.X ± .XX ± .02		.XXX ± ANGLES ±	
REV	DATE	BY	CHK	APR	DESCRIPTION	ECN	THIRD ANGLE PROJECTION		DRAWING NUMBER	
							DRAWN BY	DATE	CHK	SCALE
							MS	8/99	RLS	NONE
							SHEET 1 OF 1		SIZE	
									B	