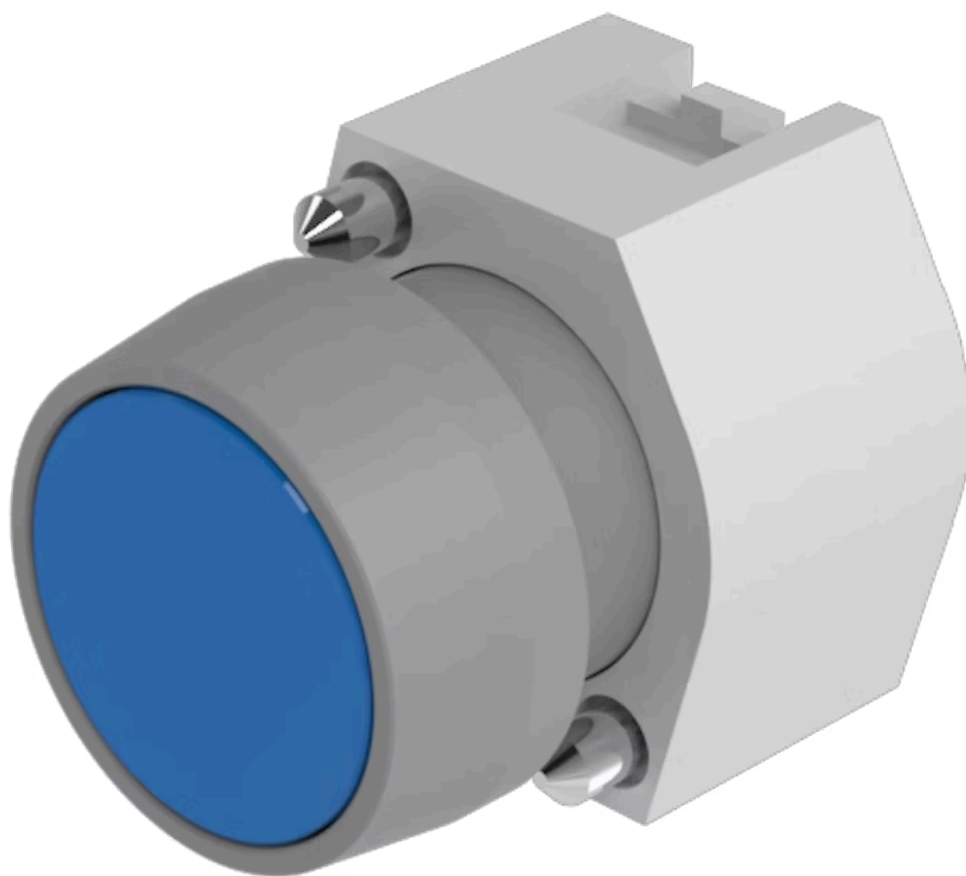


Actuator

704.010.6



<https://eao.com/p/704.010.6>

Your product:



704.010.6 Actuator

FRONT

Front bezel colour:	Grey
Front bezel material:	Plastic
Front dimension:	Ø 29 mm
Front form:	round

MOUNTING

Design:	raised
---------	--------

OPERATING-/INDICATION PART

Lens colour:	Blue
Lens shape:	flush
Lens material:	Plastic
Lens optics:	transparent
Lens illumination:	non illuminative

ELECTRICAL CHARACTERISTICS

Standards:	The switches comply with the "Standards for low-voltage switching devices" DIN EN 60947-1
------------	---

MECHANICAL CHARACTERISTIC

Operating Travel:	ca. 5.8 mm ± 0.2 mm
Operating force:	8 N
Weight:	0.04 kg

Switching action: Momentary

Mechanical lifetime: ≤3 Mio. cycles of operation

AMBIENT CONDITION

Operating temperature: – 40 °C ... + 55 °C

IP Protection: IP65 front side

Storage temperature: – 40 °C ... + 85 °C

OTHER

max. number of switching elements: 3

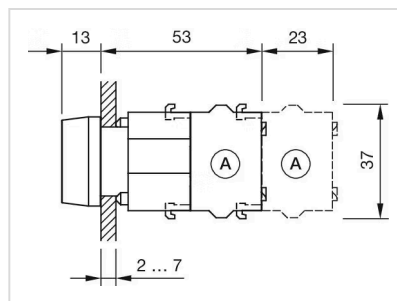
Short Description: Actuator, Ø 29 mm, flush, non illuminative, Blue, Plastic, transparent, round, Grey, Plastic, Momentary

Housing material: Plastic

Housing colour: Grey

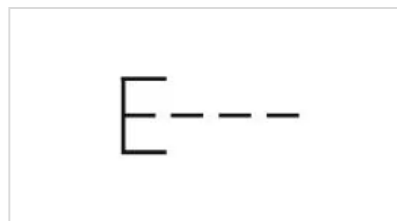
Hints: Frontring with protective cover to be mounted with a torque of 0.4 Nm onto actuator, Max. 3 switching elements can be clipped on

Dimension drawings:

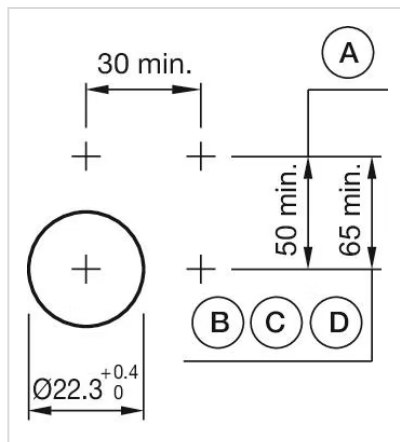


A = Screw terminal

Wiring diagrams:



Mounting cut-outs:



- A = Screw terminal
- B = Push-in terminal (PIT)
- C = Plug-in terminal 6.3 mm x 0.8 mm
- D = Double plug-in terminal 6.3 mm x 0.8 mm