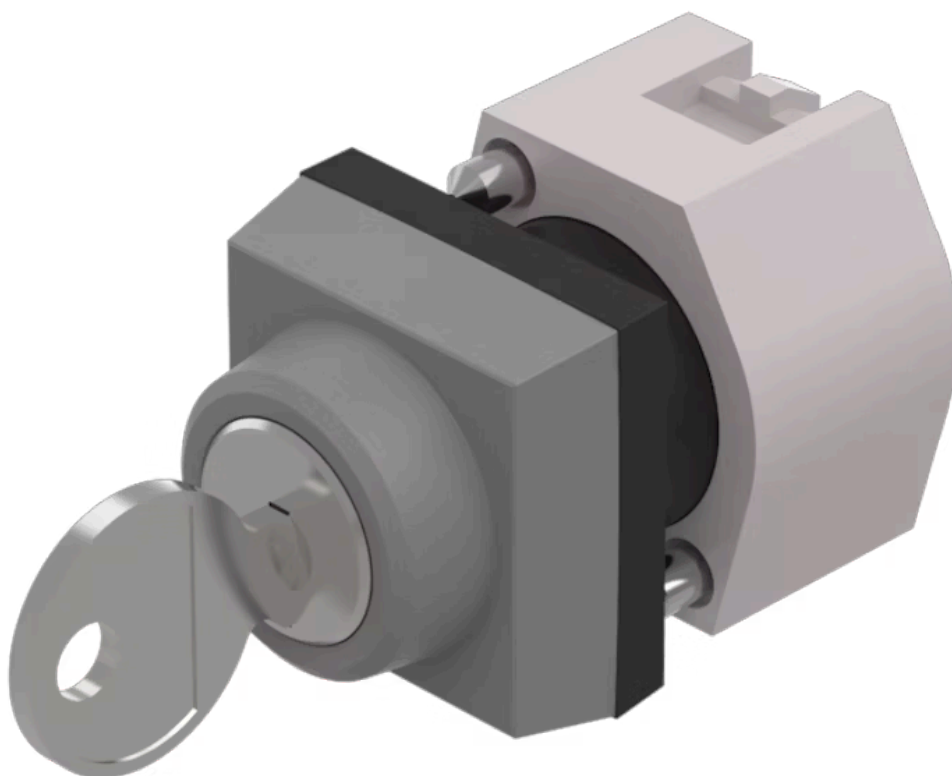


Actuator

704.333.0



<https://eao.com/p/704.333.0>

Your product:



704.333.0 Actuator

FRONT

Front dimension:	30 mm x 30 mm
Front bezel colour:	Grey
Front bezel material:	Plastic

MOUNTING

Design:	raised
---------	--------

ELECTRICAL CHARACTERISTICS

Standards:	The switches comply with the "Standards for low-voltage switching devices" DIN EN 60947-1
------------	---

MECHANICAL CHARACTERISTIC

Weight:	0.07 kg
Switching positions:	3 positions
Mechanical lifetime:	≤50 000 cycles of operation
Switching action:	Maintained (a) - Rest (a) - Maintained (a)
Switching angle:	90° left / 90° right

AMBIENT CONDITION

IP Protection:	IP65 front side
Operating temperature:	– 40 °C ... + 55 °C
Storage temperature:	– 40 °C ... + 85 °C

OTHER

Short Description:

Actuator, 30 mm x 30 mm, Grey, Plastic, Maintained (a) - Rest (a) - Maintained (a)

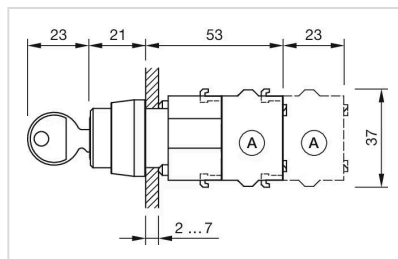
Hints:

The standard lock Ronis 251, Further lock numbers on request, Max. 3 switching elements can be clipped on

max. number of switching elements:

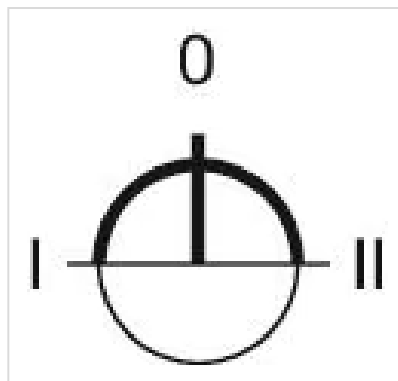
3

Dimension drawings:

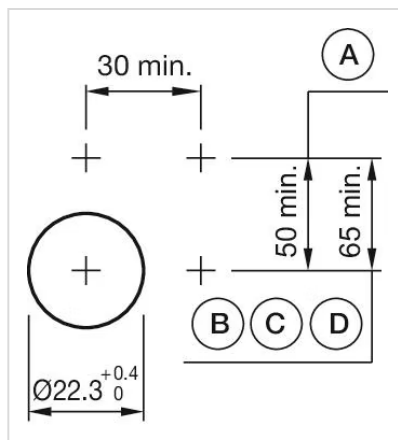


A = Screw terminal

Switching positions:



Mounting cut-outs:



A = Screw terminal
B = Push-in terminal (PIT)
C = Plug-in terminal 6.3 mm x 0.8 mm
D = Double plug-in terminal 6.3 mm x 0.8 mm

Wiring diagrams:

