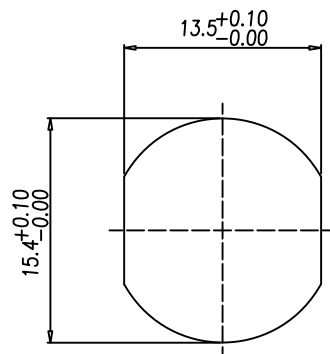
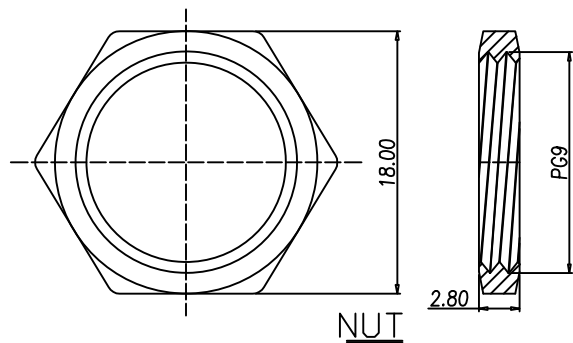
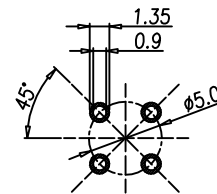
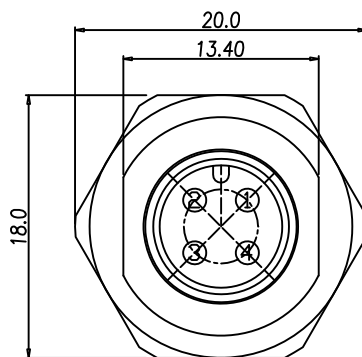
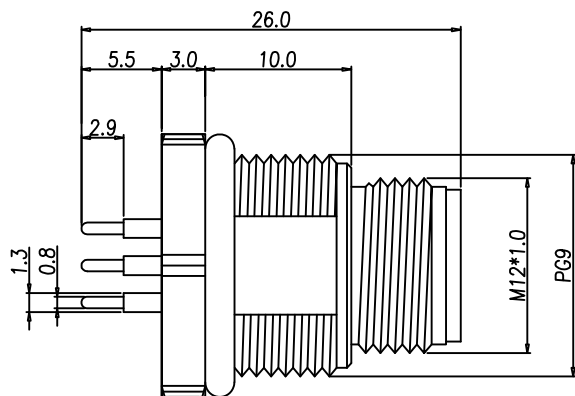


DESCRIPTION: M12 MALE - PANEL MOUNT (REAR) - 4 POS.



RECOMMEND PANEL CUT-OUT



RECOMMEND P.C.B LAYOUT

NOTE:

MATERIAL

HOUSING:
CONTACT:
NUT:
SHELL:
O-RING:

PBT UL94V-0, BLACK
BRASS
BRASS
BRASS
EPDM

FINISH

CONTACT:

GOLD PLATED
OVER 50u" NICKEL
NICKEL PLATED
NICKEL PLATED

ELECTRICAL

RATED CURRENT:
RATED VOLTAGE:
INSULATION RESISTANCE:
CONTACT RESISTANCE:
WATER PROOF:

4A
250V
100 MOhms MIN.
10 mOhms MAX.
IP67

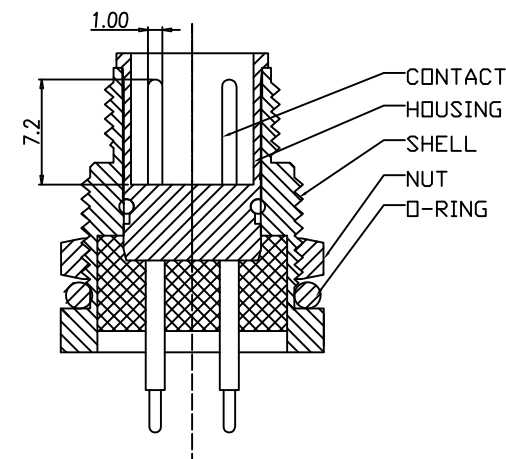
ENVIRONMENT

OPERATION TEMPERATURE: -40°C TO +85°C

860-004-113R00Y

3 = BRASS/NICKEL SHELL & NUT
S = STAINLESS STEEL SHELL & NUT

1 = GOLD FLASH
4 = 10u" GOLD



RoHS COMPLIANT

UNITS = mm

DO NOT SCALE FROM DRAWING



THESE DRAWINGS AND SPECIFICATIONS ARE THE PROPERTY OF NorComp AND SHALL NOT BE REPRODUCED, COPIED OR USED AS THE BASIS FOR THE MANUFACTURE OR SALE OF APPARATUS WITHOUT WRITTEN PERMISSION.

DRAWN:

M. SIGMON

DATE:

03-07-16

NorComp

SCALE:

NTS

SHEET

1

OF

1

REV

3

DWG NO.

860-004-113R00Y