

Actuator

704.062.6



<https://eao.com/p/704.062.6>

Your product:



704.062.6 Actuator

FRONT

Front form:	round
Front dimension:	Ø 29 mm
Front bezel colour:	Nature
Front bezel material:	Aluminium

MOUNTING

Design:	raised
---------	--------

OPERATING-/INDICATION PART

Lens illumination:	illuminative
Lens material:	Plastic
Lens colour:	Blue
Lens shape:	flush
Lens optics:	transparent

ELECTRICAL CHARACTERISTICS

Standards:	The switches comply with the "Standards for low-voltage switching devices" DIN EN 60947-1
------------	---

MECHANICAL CHARACTERISTIC

Operating Travel:	ca. 5.8 mm ± 0.2 mm
Operating force:	8 N
Switching action:	Maintained

Terminal:	Screw terminal
Mechanical lifetime:	≤3 Mio. cycles of operation
Weight:	0.056 kg

AMBIENT CONDITION

Storage temperature:	– 40 °C ... + 85 °C
Operating temperature:	– 40 °C ... + 55 °C
IP Protection:	IP65 front side

OTHER

max. number of switching elements:	3
---	---

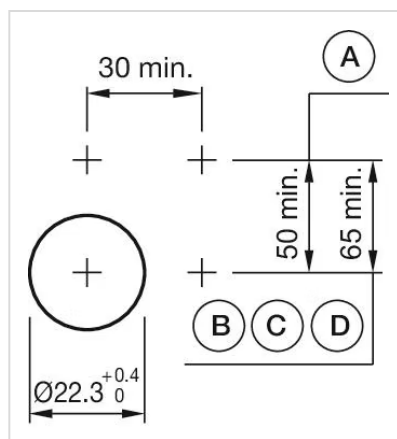
Short Description: Actuator, Ø 29 mm, flush, illuminative, Blue, Plastic, transparent, round, Nature, Aluminium, anodised, Maintained, Screw terminal

Hints: Frontring with protective cover to be mounted with a torque of 0.4 Nm onto actuator, Max. 3 switching elements can be clipped on

Housing material: Plastic

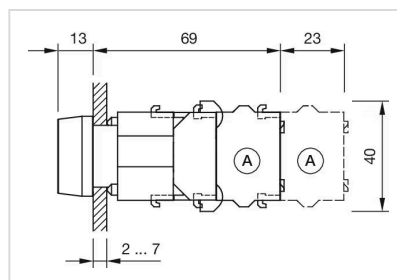
Housing colour: Grey

Mounting cut-outs:



A = Screw terminal
 B = Push-in terminal (PIT)
 C = Plug-in terminal 6.3 mm x 0.8 mm
 D = Double plug-in terminal 6.3 mm x 0.8 mm

Dimension drawings:



A = Screw terminal

Wiring diagrams:

