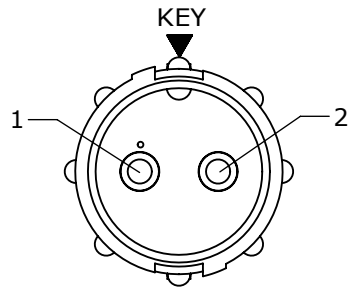
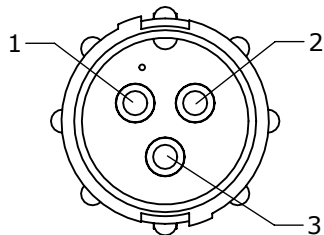


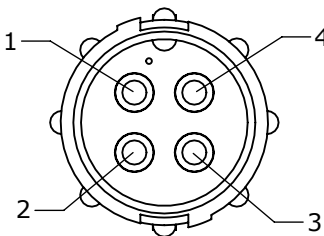
NOTES:
1. ALL PARTS TO BE BULK PACKED



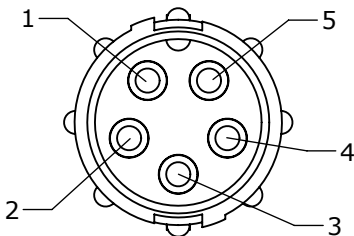
FACE VIEW
8380-2PG-3XX



FACE VIEW
8380-3PG-3XX



FACE VIEW
8380-4PG-3XX



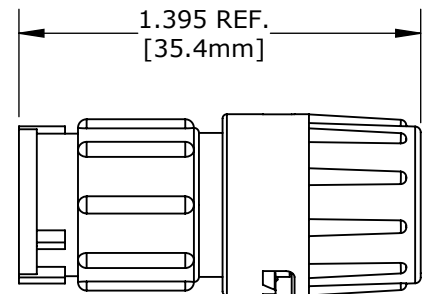
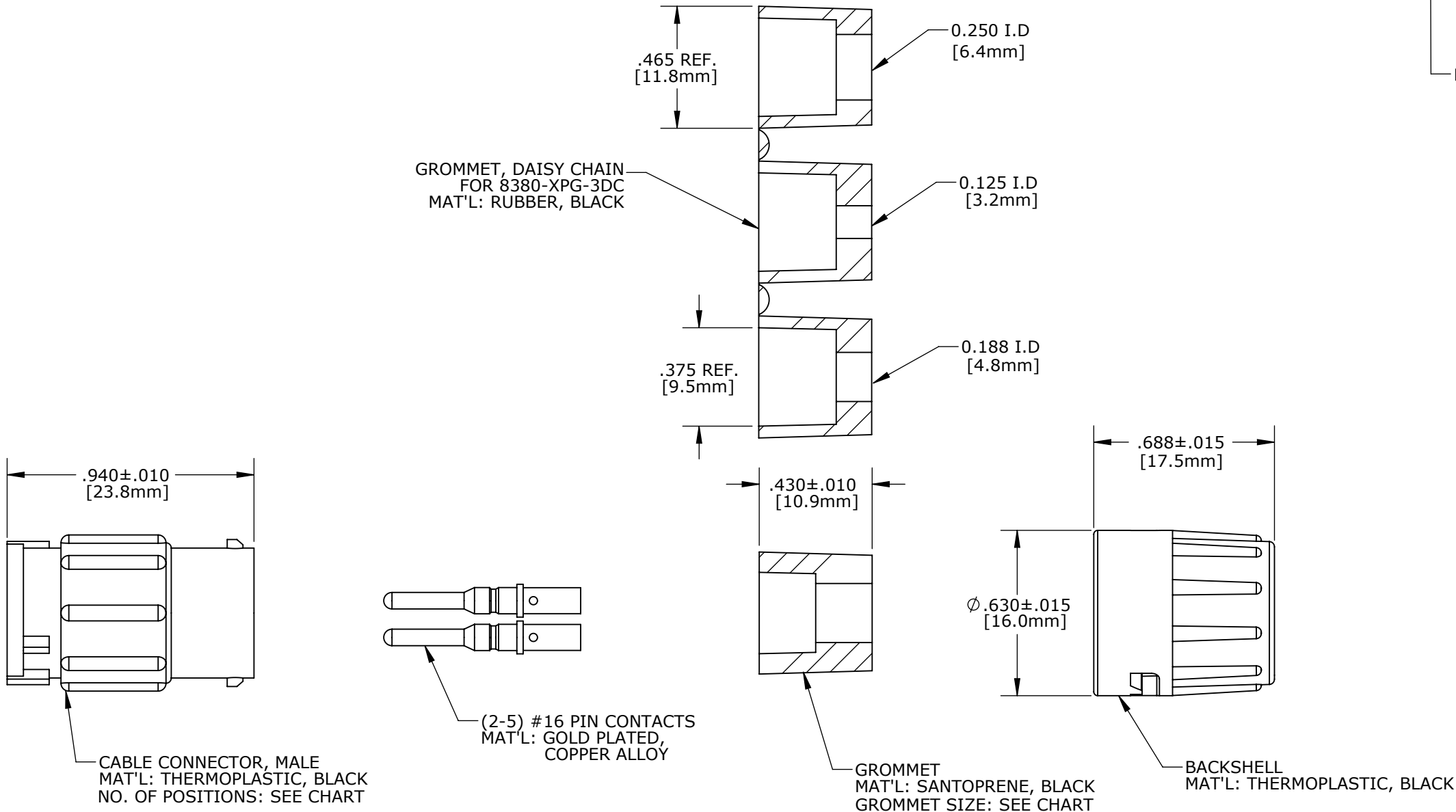
FACE VIEW
8380-5PG-3XX

ASSY P/N	GROMMET FOR CABLE O.D.
8380-XPG-3DC	DAISY CHAIN
8380-XPG-311	0.09-0.14 [2.3-3.5mm]
8380-XPG-315	0.15-0.17 [3.8-4.3mm]
8380-XPG-318	0.18-0.20 [4.6-5.1mm]
8380-XPG-321	0.21-0.23 [5.3-5.8mm]

KIT P/N	NO. OF CONTACTS
8380-2PG-3XX	(2)-#16
8380-3PG-3XX	(3)-#16
8380-4PG-3XX	(4)-#16
8380-5PG-3XX	(5)-#16

GROMMET SIZE FOR
SINGLE GROMMET OR
"DC" FOR DAISY CHAIN

NO. OF CONTACT



SHOWN ASSEMBLED KIT
FOR CUSTOMER REFERENCE ONLY

DIMENSIONS IN BRACKET [] ARE METRIC.

CUSTOMER APPROVAL	
THIS DOCUMENT CONTAINS CONFIDENTIAL INFORMATION PROPRIETARY TO CONXALL CORPORATION. ANY REPRODUCTION, DISCLOSURE, OR USE OF THIS DOCUMENT /INFORMATION IS EXPRESSLY PROHIBITED UNLESS AUTHORIZED IN WRITING BY CONXALL CORPORATION.	
APPROVED BY:	_____
DATE:	_____

RoHS COMPLIANT

A	AN	12-03-12	DRAWING CREATED PER DOR 12-E149SL #44
REV.	INIT.	DATE	DESCRIPTION
AN		11-29-12	ORIG. DRAWN BY: DATE: 11-29-12
CHECKED BY:			conxall 601 E. WILDWOOD VILLA PARK, IL 60181
APPROVED BY:			
TITLE: CABLE TO CABLE CONN. ASS'Y (2-5) #16 PIN CONTACTS MINI-CON-X			CUSTOMER: STANDARD PRODUCT
PART NUMBER: 8380-XPG-3XX			
SCALE: NTS			SIZE: B
SHEET: 1 OF 1			DIRECTORY: SLW
FILE: 8380-XPG-3XX			REV: A