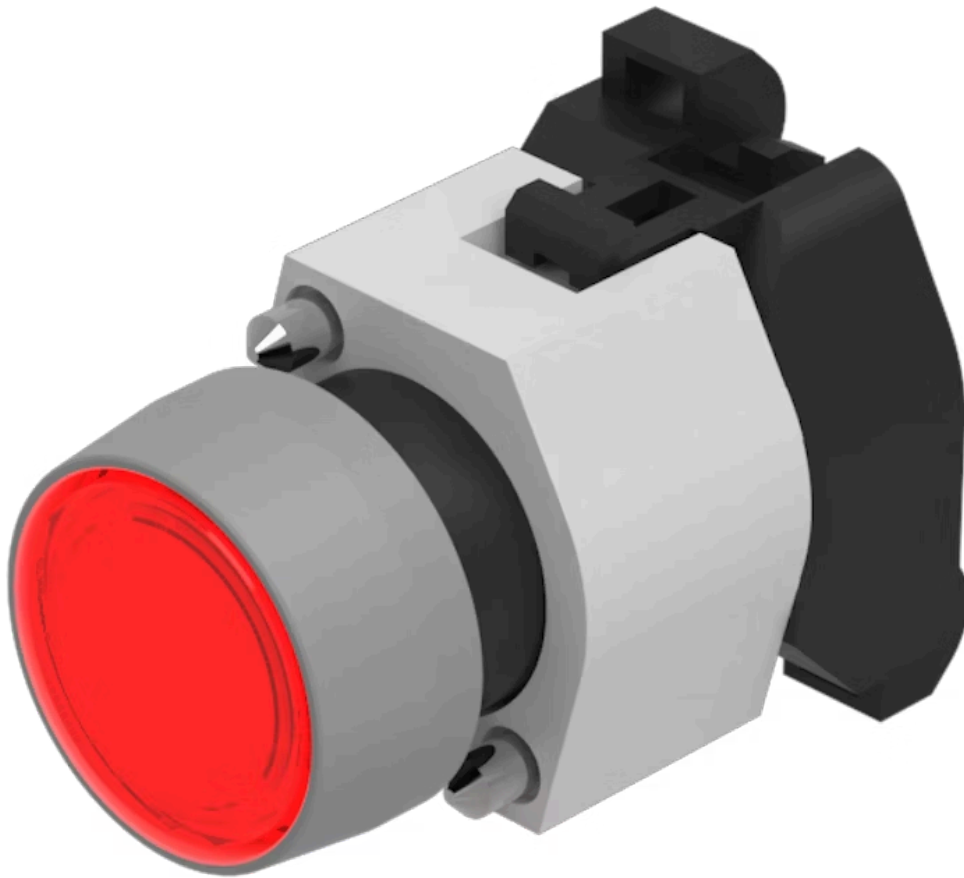


Actuator

704.060.2



<https://eao.com/p/704.060.2>

Your product:



704.060.2 Actuator

FRONT

| | |
|-----------------------|---------|
| Front bezel material: | Plastic |
| Front bezel colour: | Grey |
| Front form: | round |
| Front dimension: | Ø 29 mm |

MOUNTING

| | |
|---------|--------|
| Design: | raised |
|---------|--------|

OPERATING-/INDICATION PART

| | |
|--------------------|--------------|
| Lens colour: | Red |
| Lens material: | Plastic |
| Lens optics: | transparent |
| Lens illumination: | illuminative |
| Lens shape: | flush |

ELECTRICAL CHARACTERISTICS

| | |
|------------|---|
| Standards: | The switches comply with the "Standards for low-voltage switching devices" DIN EN 60947-1 |
|------------|---|

MECHANICAL CHARACTERISTIC

| | |
|----------------------|-----------------------------|
| Mechanical lifetime: | ≤3 Mio. cycles of operation |
| Switching action: | Maintained |
| Terminal: | Screw terminal |

Operating Travel: ca. 5.8 mm ± 0.2 mm

Weight: 0.056 kg

Operating force: 8 N

AMBIENT CONDITION

Operating temperature: – 40 °C ... + 55 °C

IP Protection: IP65 front side

Storage temperature: – 40 °C ... + 85 °C

OTHER

Short Description: Actuator, Ø 29 mm, flush, illuminative, Red, Plastic, transparent, round, Grey, Plastic, Maintained, Screw terminal

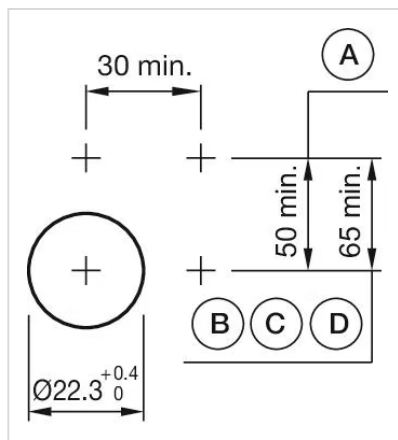
max. number of switching elements: 3

Housing material: Plastic

Housing colour: Grey

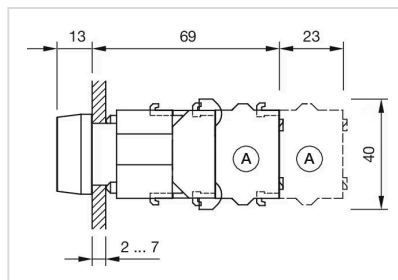
Hints: Frontring with protective cover to be mounted with a torque of 0.4 Nm onto actuator, Max. 3 switching elements can be clipped on

Mounting cut-outs:



A = Screw terminal
B = Push-in terminal (PIT)
C = Plug-in terminal 6.3 mm x 0.8 mm
D = Double plug-in terminal 6.3 mm x 0.8 mm

Dimension drawings:



A = Screw terminal

Wiring diagrams:

