

8P1P YYY 2 0 0 GRF 01

SERIES  
14.00 [0.551]

# OF POSITIONS  
(Ex. 002)  
\*\*SEE CHART A\*\*

2 = FEMALE

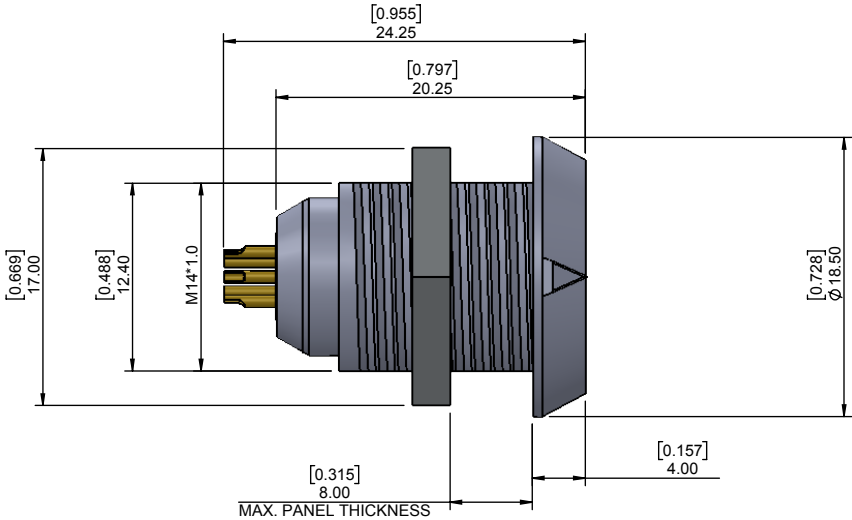
SOLDER CUP (PANEL MOUNT)

1 = GOLD FLASH

RoHS COMPLIANT

NUT "B" COLOR  
G = GREY

PLASTIC SHELL



CHARACTERISTICS

MATERIALS

HOUSING : ABS+PC

HOUSING COLOR : GREY

NUT A : BRASS

NUT A PLATING : NICKEL

CONTACTS : COPPER ALLOY

CONTACT PLATING : 7µ" GOLD PLATED OVER 196µ" NICKEL MIN.

INSULATOR : PPS (HIGH TEMPERATURE)

MECHANICAL

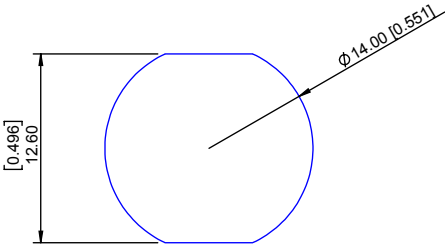
DURABILITY: 2000 CYCLES

OPERATING TEMP. RANGE: -20° C ~ +120° C

PROCESS TEMPERATURE : 260°C FOR 5 SECONDS

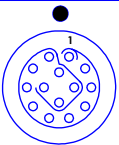
MAX. TORQUE VALUE : 0.7 Nm [6.19 IN/lbs]

IP RATING: 50



PANEL CUTOUT

TOLERANCE = +0.10, -0.0  
[+0.004, -0.00]



14 POSITION  
26 AWG MAX.  
2 AMP MAX.  
PIN Ø = 0.50 [0.020]

CONTACT  
RESISTANCE = 10 mΩ  
TEST VOLTAGE = 600V  
WORKING VOLTAGE = 200V

CHART A

● = KEY LOCATION

\*\*VIEW FROM TERMINATION END\*\*

2 POSITION 22 AWG MAX. 10 AMP MAX. PIN Ø = 1.30 [0.051]	3 POSITION 22 AWG MAX. 10 AMP MAX. PIN Ø = 1.30 [0.051]	4 POSITION 22 AWG MAX. 8 AMP MAX. PIN Ø = 0.90 [0.035]	5 POSITION 22 AWG MAX. 7 AMP MAX. PIN Ø = 0.90 [0.035]	6 POSITION 24 AWG MAX. 6 AMP MAX. PIN Ø = 0.70 [0.028]	7 POSITION 24 AWG MAX. 5 AMP MAX. PIN Ø = 0.70 [0.028]	8 POSITION 24 AWG MAX. 5 AMP MAX. PIN Ø = 0.70 [0.028]	9 POSITION 26 AWG MAX. 3 AMP MAX. PIN Ø = 0.50 [0.020]	10 POSITION 26 AWG MAX. 3 AMP MAX. PIN Ø = 0.50 [0.020]
CONTACT RESISTANCE = 5 mΩ TEST VOLTAGE = 1200V WORKING VOLTAGE = 400V	CONTACT RESISTANCE = 5 mΩ TEST VOLTAGE = 1200V WORKING VOLTAGE = 400V	CONTACT RESISTANCE = 6 mΩ TEST VOLTAGE = 1200V WORKING VOLTAGE = 400V	CONTACT RESISTANCE = 6 mΩ TEST VOLTAGE = 1050V WORKING VOLTAGE = 350V	CONTACT RESISTANCE = 7.5 mΩ TEST VOLTAGE = 1050V WORKING VOLTAGE = 350V	CONTACT RESISTANCE = 7.5 mΩ TEST VOLTAGE = 1050V WORKING VOLTAGE = 350V	CONTACT RESISTANCE = 7.5 mΩ TEST VOLTAGE = 1050V WORKING VOLTAGE = 350V	CONTACT RESISTANCE = 10 mΩ TEST VOLTAGE = 850V WORKING VOLTAGE = 280V	CONTACT RESISTANCE = 10 mΩ TEST VOLTAGE = 850V WORKING VOLTAGE = 280V

RoHS COMPLIANT