

Actuator

704.095.0



<https://eao.com/p/704.095.0>

Your product:



704.095.0 Actuator

FRONT

Front bezel colour:	Nature
Front dimension:	Ø 29 mm
Front bezel material:	Aluminium

MOUNTING

Design:	raised
---------	--------

OPERATING-/INDICATION PART

Lever shape:	long
Lever colour:	Black
Lever material:	plastic

ELECTRICAL CHARACTERISTICS

Standards:	The switches comply with the "Standards for low-voltage switching devices" DIN EN 60947-1
------------	---

MECHANICAL CHARACTERISTIC

Mechanical lifetime:	≤2.5 Mio. cycles of operation
Switching positions:	3 positions
Weight:	0.037 kg
Switching action:	Momentary - Rest - Momentary
Switching angle:	42° left / 42° right

AMBIENT CONDITION

Operating temperature: – 40 °C ... + 55 °C

IP Protection: IP65 front side

Storage temperature: – 40 °C ... + 85 °C

OTHER

Hints: Max. 3 switching elements can be clipped on

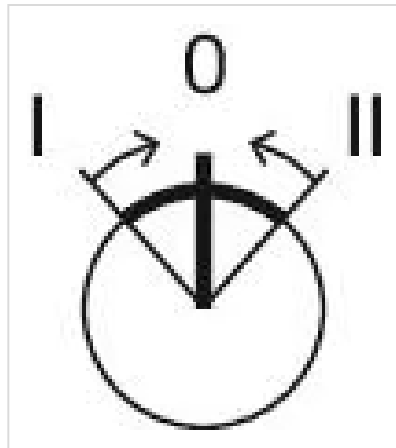
max. number of switching elements: 3

Short Description: Actuator, Ø 29 mm, non illuminative, Black, long, Nature, Aluminium, anodised, Momentary - Rest - Momentary

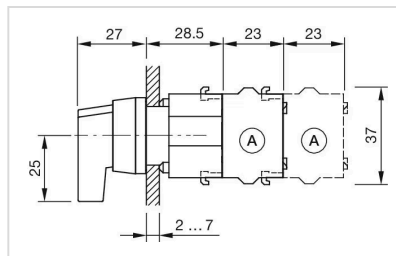
Wiring diagrams:



Switching positions:

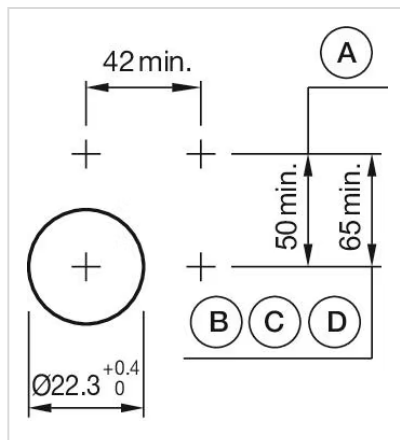


Dimension drawings:



A = Screw terminal

Mounting cut-outs:



- A = Screw terminal
- B = Push-in terminal (PIT)
- C = Plug-in terminal 6.3 mm x 0.8 mm
- D = Double plug-in terminal 6.3 mm x 0.8 mm