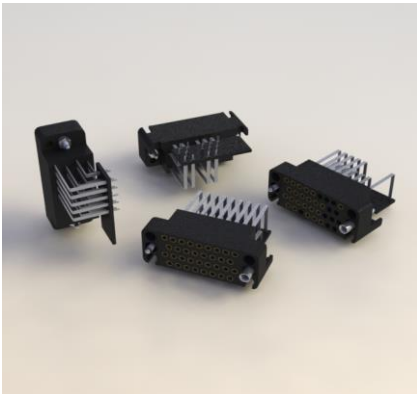




B01 SERIES



FEATURES:

- Meets requirements of ISO-2593 for CCITT V.35 interface
- UL Approved
- Accepts 0.062"(1.57mm) and 0.093"(2.36mm) board thickness
- PCB right angle and vertical mount available
- Mounting bracket secures connector to the board
- Preloaded with size 16 contacts
- Variety of mounting options
- Fully assembled or selectively loaded
- Intermateable with comparable series connectors

Specifications:

Insulator Material	UL 94V-0 Thermoplastic Polyester, Black Color
Contact Material	Copper Alloy (Spring temper)
Contact Plating	Gold Plated over Nickel on Contact Area, Tin over Nickel on Tails
Current Rating	5 Amperes
Contact Resistance	10 milliohms
Insulation Resistance	5000 Megaohms
Operating	-55°C to +125°C

Example Part Number:

B01-034-240-036

Series

B01 - Receptacle

Contacts Position

34 Available Positions

Contact Plating Code

2 30µ" Gold

6 30µ" Gold

Contact Loading

(see specification)

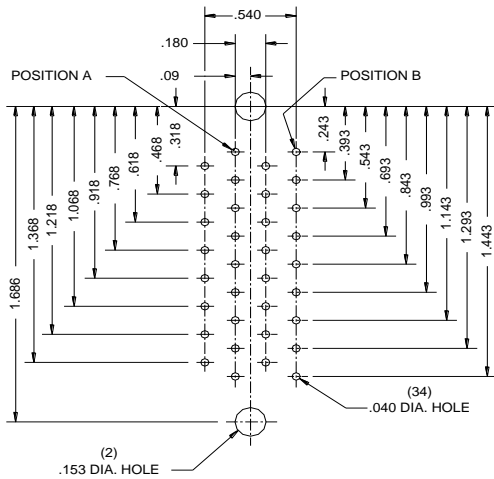
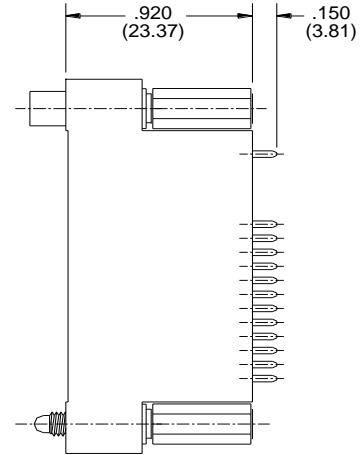
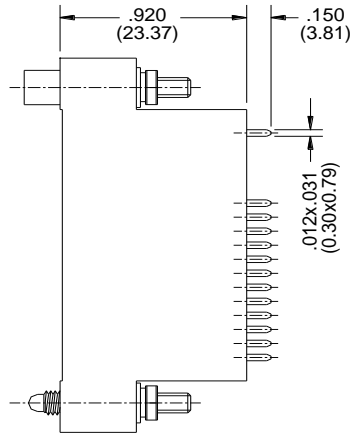
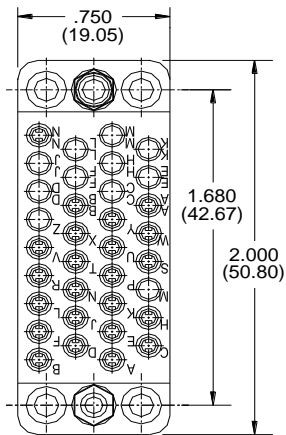
Contact Arrangement

20 Vertical

40 Right Angle



B01 SERIES



CONNECTOR PART NUMBER	CONTACT LOCATION	TOTAL CONTACTS	CONTACT AREA PLATING
B01-034-220-900	ALL POSITIONS	34	10 MICROINCHES OF GOLD OVER NICKEL
B01-034-220-901	A, B, C, D, E, F, H, P, R, S, T, U, V, W, X, Y, AA.	17	10 MICROINCHES OF GOLD OVER NICKEL
B01-034-220-902	A, B, C, D, E, F, H, J, L, M, N, P, R, S, T, U, V, W, X, Y, AA, NN.	22	10 MICROINCHES OF GOLD OVER NICKEL
B01-034-220-903	A, B, C, D, E, F, H, J, L, N, P, R, S, T, U, V, W, X, Y, AA, HH, NN.	22	10 MICROINCHES OF GOLD OVER NICKEL
B01-034-220-904	A, B, C, D, E, F, H, K, L, N, P, R, S, T, U, V, W, X, Y, AA, BB, NN.	22	10 MICROINCHES OF GOLD OVER NICKEL
B01-034-220-905	B, C, D, E, F, H, L, N, P, R, S, T, U, V, W, X, Y, AA, HH, KK, NN.	21	10 MICROINCHES OF GOLD OVER NICKEL
B01-034-620-906	A, B, C, D, E, F, H, J, K, L, N, P, R, S, T, U, V, W, X, Y, AA, BB, NN.	23	30 MICROINCHES OF GOLD OVER NICKEL

0- NO STAND-OFF
 1- WITH STAND-OFF
 GOLD PLATING 2- 10 MICROINCHES
 6- 30 MICROINCHES