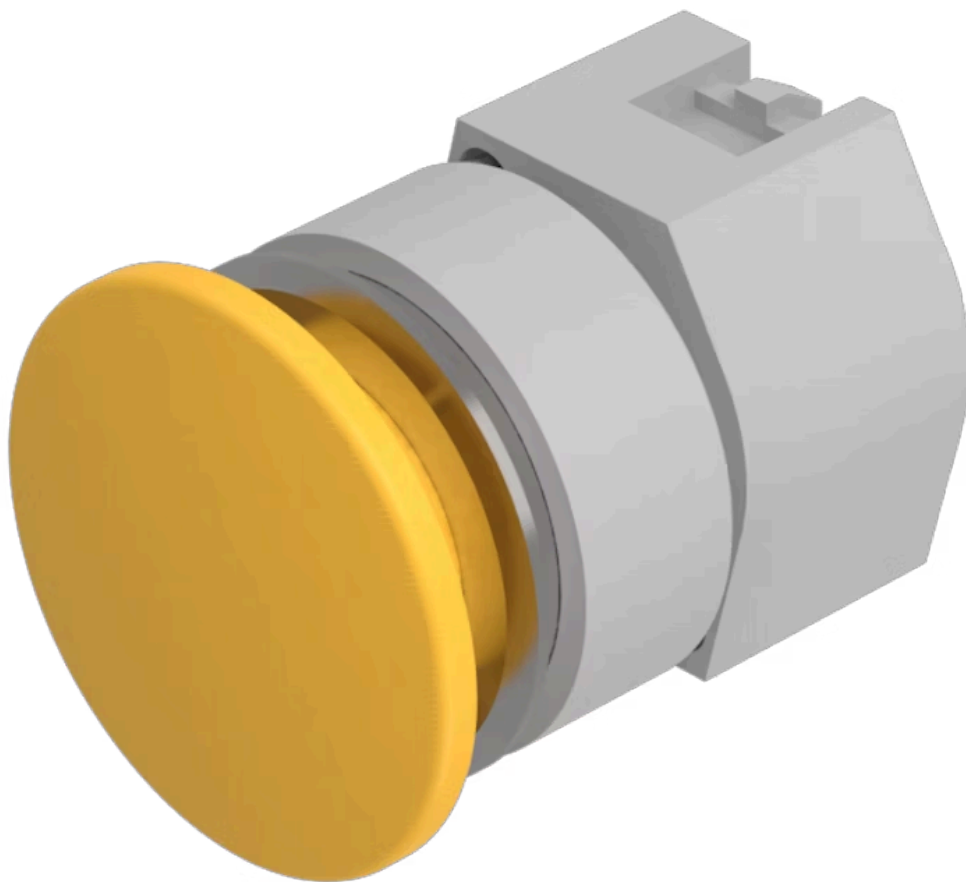


# Actuator

704.071.410



<https://eao.com/p/704.071.410>

Your product:

---



## 704.071.410 Actuator

### FRONT

Front dimension:	Ø 40 mm
Front bezel colour:	Black
Front bezel material:	Aluminium

### MOUNTING

Design:	flush
Mounting cut-out:	Ø 30.5 mm

### OPERATING-/INDICATION PART

Lens illumination:	non illuminative
Lens material:	Plastic
Lens optics:	opaque
Lens colour:	Yellow
Lens shape:	mushroom-head

### ELECTRICAL CHARACTERISTICS

Standards:	The switches comply with the "Standards for low-voltage switching devices" DIN EN 60947-1
------------	---

### MECHANICAL CHARACTERISTIC

Mechanical lifetime:	≤3 Mio. cycles of operation
Switching action:	Momentary
Operating force:	6.2 N

**Operating Travel:** ca. 5.8 mm ± 0.2 mm

**Weight:** 0.041 kg

## AMBIENT CONDITION

**Storage temperature:** – 40 °C ... + 85 °C

**Operating temperature:** – 40 °C ... + 55 °C

**IP Protection:** IP65 front side

## OTHER

**Housing colour:** Grey

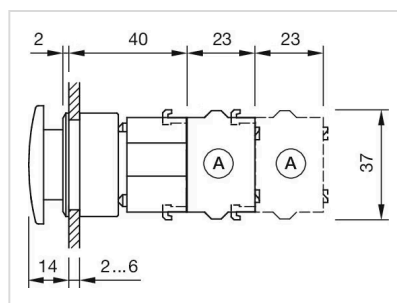
**max. number of switching elements:** 3

**Short Description:** Actuator, Ø 30.5 mm, Ø 40 mm, mushroom-head, non illuminative, Yellow, Plastic, opaque, Black, Aluminium, anodised, Momentary

**Hints:** Max. 3 switching elements can be clipped on, The colour of anodised aluminium parts can vary due to technical production reasons

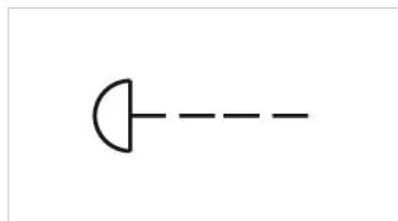
**Housing material:** Plastic

**Dimension drawings:**

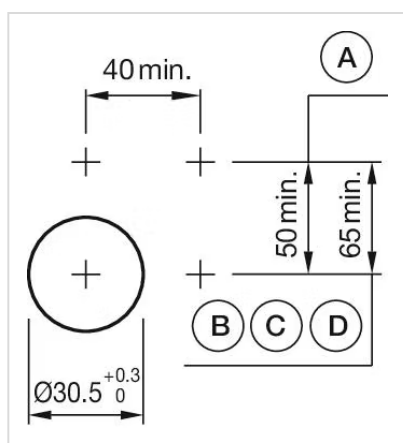


A = Screw terminal

**Wiring diagrams:**



**Mounting cut-outs:**



A = Screw terminal

B = Push-in terminal (PIT)

C = Plug-in terminal 6.3 mm x 0.8 mm

D = Double plug-in terminal 6.3 mm x 0.8 mm