

DESCRIPTION: FEMALE // STANDARD DSUB // CRIMP AND POKE

SPECIFICATIONS:

ELECTRICAL:

CURRENT RATING:	5 AMPS
CONTACT RESISTANCE:	15 mOhms MAX.
INSULATION RESISTANCE:	1,000 MOhms MIN.
OPERATING TEMPERATURE:	-50°C TO +100°C
VOLTAGE:	500 VAC FOR 1 MINUTE

MATERIALS:

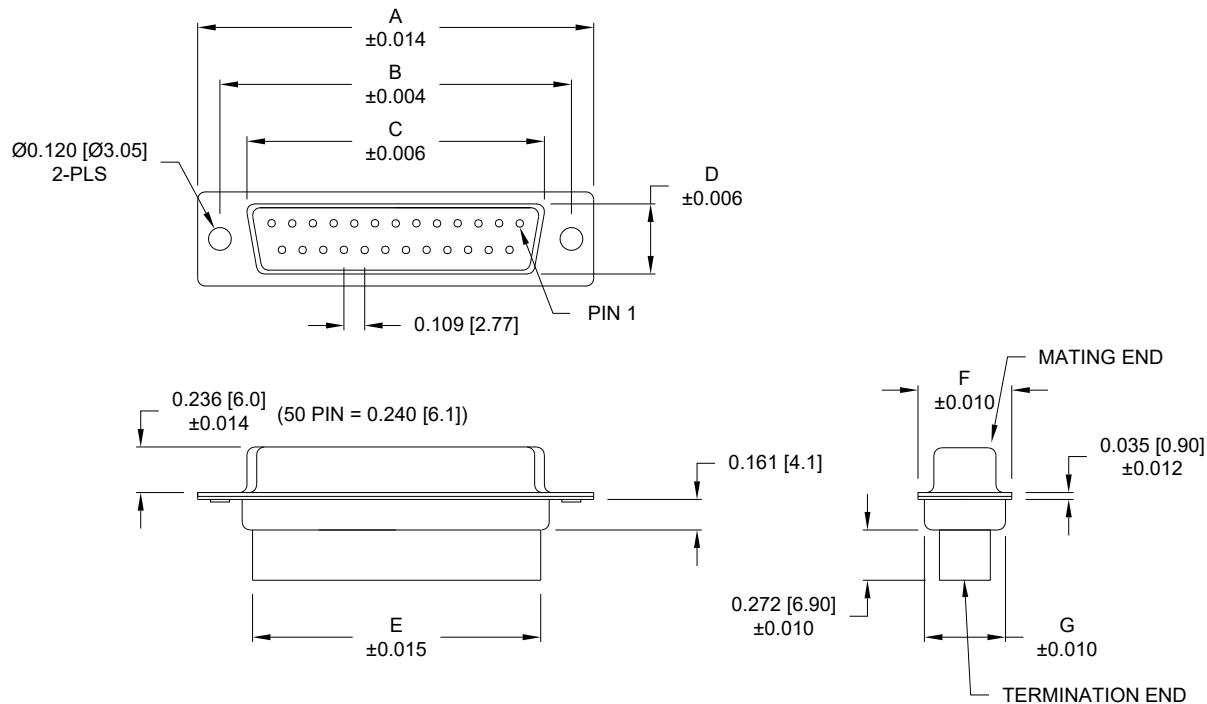
FRONT INSULATOR:	PBT-BLACK, UL94V-0 RATED
REAR INSULATOR:	PA66-BLACK, UL94V-0 RATED
PROCESS TEMP:	230°C
SHELL:	NICKEL PLATED STEEL

COMPATIBLE WITH NORCOMP CONTACT PART NUMBERS BELOW:

170-002-170L001	170-102-170L001
170-002-170L002	170-102-170L002
170-002-170L003	170-102-170L003
170-202-170L003	

****NOTE: CONTACTS MUST BE PURCHASED SEPARATELY****

****NOTE: ASSEMBLY INSTRUCTION ON PAGE 3****



DIMENSIONS

No. OF PINS	UNITS	A	B	C	D	E	F	G
9	inch	1.213	0.984	0.642	0.311	0.618	0.496	0.429
	mm	30.80	24.99	16.30	7.90	15.70	12.60	10.90
15	inch	1.541	1.312	0.970	0.311	0.933	0.496	0.429
	mm	39.15	33.32	24.65	7.90	23.70	12.60	10.90
25	inch	2.087	1.852	1.512	0.311	1.496	0.496	0.429
	mm	53.00	47.04	38.40	7.90	38.00	12.60	10.90
37	inch	2.728	2.500	2.157	0.311	2.142	0.496	0.429
	mm	69.30	63.50	54.80	7.90	54.40	12.60	10.90
50	inch	2.638	2.402	2.055	0.429	2.039	0.602	0.535
	mm	67.00	61.00	52.20	10.90	51.80	15.30	13.60

SERIES	170-YYY-27YLYY0
POSITIONS	
009	
015	
025	
037	
050	
GENDER	
2 = FEMALE	
TERMINATION	
7 = CRIMP & POKE	
SHELL PLATING	
2 = TIN (DISCONTINUED)	
3 = NICKEL	
HARDWARE OPTIONS	
00 = NO HARDWARE	
01 = .098" CLINCH NUT (SOLDER SIDE)	
02 = .236" CLINCH NUT (SOLDER SIDE)	
03 = .236" CLINCH NUT (MATING SIDE)	
04 = .098" M3 CLINCH NUT (SOLDER SIDE)	
PLATING OPTIONS	
0 = NO CONTACTS	

UNITS = inch [mm]

DO NOT SCALE FROM DRAWING



THESE DRAWINGS AND SPECIFICATIONS ARE THE PROPERTY OF NorComp AND SHALL NOT BE REPRODUCED, COPIED OR USED AS THE BASIS FOR THE MANUFACTURE OR SALE OF APPARATUS WITHOUT WRITTEN PERMISSION.

DRAWN:
P. JENKINS

DATE:
08/18/1998

NorComp

SCALE:
NTS

SHEET OF
1 3

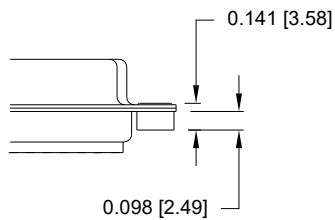
REV
19

DWG NO.

170-YYY-27YLYY0

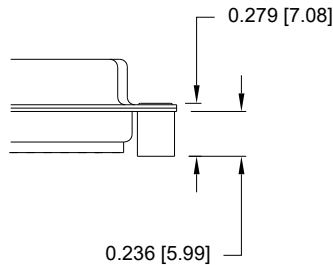
TOLERANCE:
ALL DIMENSIONS ARE ±0.010

01 0.065" (SOLDER SIDE)



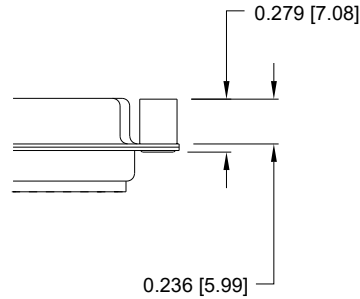
#4-40 INTERNAL THREADS

02 0.236" (SOLDER SIDE)



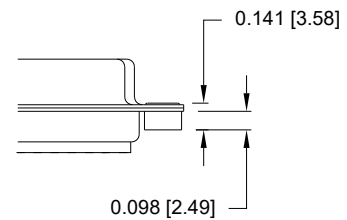
#4-40 INTERNAL THREADS

03 0.236" (MATING SIDE)



#4-40 INTERNAL THREADS

04 0.065" (SOLDER SIDE)



M3 INTERNAL THREADS

RoHS COMPLIANT



THESE DRAWINGS AND SPECIFICATIONS ARE THE PROPERTY OF NorComp AND SHALL NOT BE REPRODUCED, COPIED OR USED AS THE BASIS FOR THE MANUFACTURE OR SALE OF APPARATUS WITHOUT WRITTEN PERMISSION.

DRAWN:
P. JENKINS

DATE:
08/18/1998

UNITS = inch [mm]

DO NOT SCALE FROM DRAWING

NorComp

SCALE:
NTS

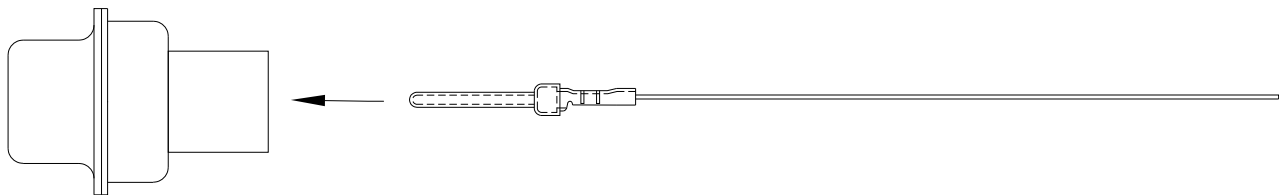
SHEET OF
2 3

REV
19

DWG NO. 170-YYY-27YLYY0

ASSEMBLY INSTRUCTIONS:

- 1. CHOOSE CONTACT THAT IS COMPATIBLE
 - a. SHOWN ON PAGE 1
- 2. USE APPROPRIATE CRIMP TOOL
 - a. 170-701-170-000 (STAMPED CRIMP HAND TOOL)
 - b. 170-702-170-000 (MACHINED CRIMP HAND TOOL)
- 3. FOLLOW CRIMP HAND TOOL INSTRUCTIONS
 - a. FOUND ON NORCOMP WEBSITE ON 170 SERIES CONTACTS PRODUCT PAGE
 - b. <https://www.norcomp.net/series/170-series-contacts>
- 4. ONCE CONTACT IS CRIMPED INSERT INTO HOUSING AS SHOWN BELOW:



RoHS COMPLIANT



THESE DRAWINGS AND SPECIFICATIONS ARE THE PROPERTY OF NorComp AND SHALL NOT BE REPRODUCED, COPIED OR USED AS THE BASIS FOR THE MANUFACTURE OR SALE OF APPARATUS WITHOUT WRITTEN PERMISSION.

DRAWN:
P. JENKINS
DATE:
08/18/1998

UNITS = inch [mm]

DO NOT SCALE FROM DRAWING

NorComp	SCALE: NTS	SHEET 3	OF 3	REV 19
	DWG NO. 170-YYY-27YLYY0			