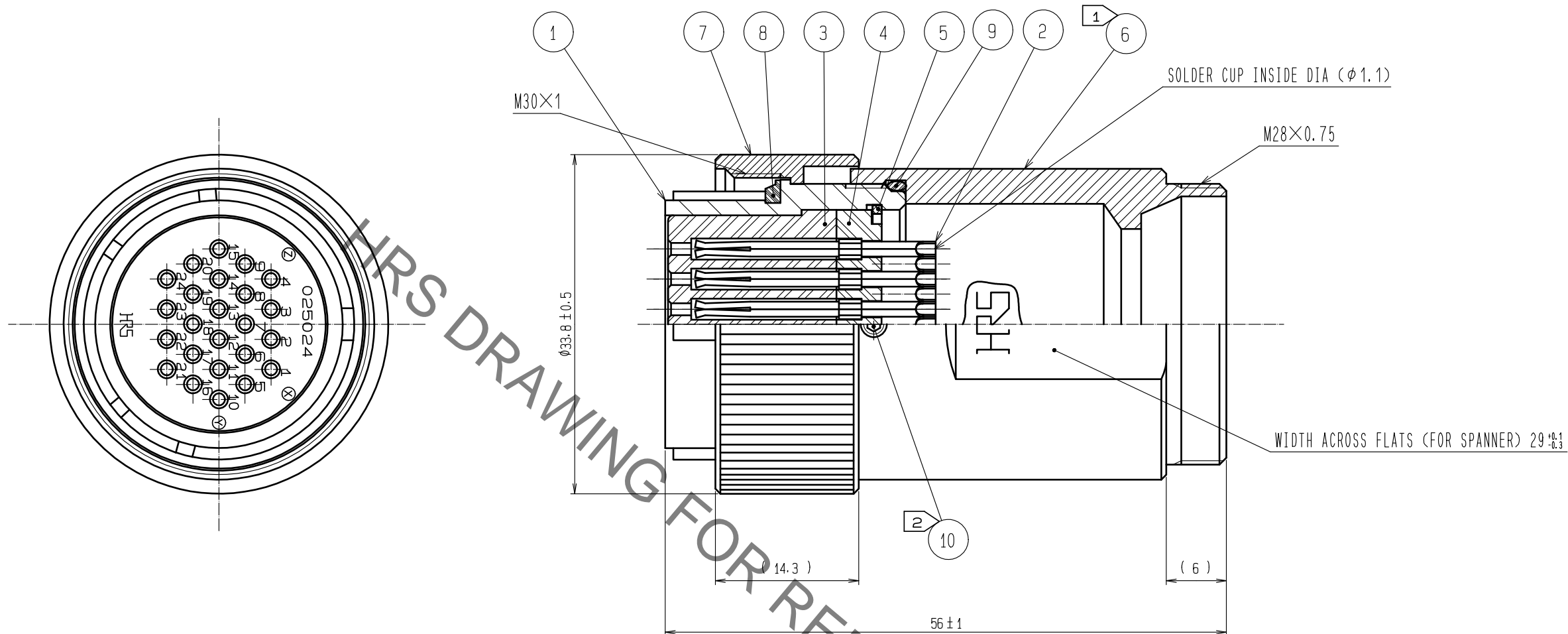
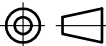
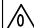




Jan.1.2022 Copyright 2022 HIROSE ELECTRIC CO., LTD. All Rights Reserved.
In case of consideration for using Automotive equipment / device which demand high reliability, kindly contact our sales window correspondents.



- NOTES
- 1 THE RECOMMENDED CLAMP TORQUE REF. NO. ⑥ : 5 TO 5.5N · m.
 - 2 THE RECOMMENDED CLAMP TORQUE REF. NO. ⑩ : 0.2 TO 0.25N · m.
 - 3 ROTATION EXAMPLES OF REF. NO. ① AND NO. ⑥ ARE SHOWN.
 - 4 LOCTITE 243, HENKEL JAPAN OR EQUIVALENT IS RECOMMENDED TO PREVENT REF. NO. ⑥ AND NO. ⑩ FROM LOOSENING.
 - 5 ONE EXAMPLE OF THE ROTATION OF REF. NO. ⑤ TO REF. NO. ① IS SHOWN.
 - 6 THIS PRODUCT TO BE USED WITH CABLECLAMP, JR25WCC-**(31).
 - 7 **DESIGNATE DIAMETER OF APPLICABLE.
 - 8 THE CABLE PULL AND TWISTING STRENGTH AND OTHER CHARACTERISTICS MAY DIFFER, DEPENDING ON THE CABLE STRUCTURE.
 - 9 PLEASE CONFIRM BEFORE THE USE.

5	PHOSPHOR BRONZE	NICKEL PLATING	10	STAINLESS	HEX:1.27					
4	PHENOL-FORMALDEHYDE	(BLACK) UL94V-0	9	ACRYLONITRILE BUTADIENE RUBBER	(GLAY)					
3	PHENOL-FORMALDEHYDE	(BLACK) UL94V-0	8	ACRYLONITRILE BUTADIENE RUBBER	(GLAY)					
2	COPPER ALLOY	SILVER PLATING 2 μm	7	BRASS	BLACK CHROME PLATING					
1	ALUMINUM ALLOY	BLACK CHROME PLATING	6	BRASS	BLACK CHROME PLATING					
NO.	MATERIAL	FINISH . REMARKS		NO.	MATERIAL	FINISH . REMARKS				
UNITS mm				SCALE 2 : 1		COUNT	DESCRIPTION OF REVISIONS	DESIGNED	CHECKED	DATE
 HIROSE ELECTRIC CO., LTD.		APPROVED :HY. KOBAYASHI		18.02.22		DRAWING NO.		EDC-110576-31-00		
		CHECKED :HY. KOBAYASHI		18.02.22		PART NO.		JR25WP-24S(31)		
		DESIGNED :TH. KAMEYA		18.02.21		CODE NO.		CL114-2022-5-31		
		DRAWN :MK. INOUE		18.02.13				 1/		