

SIGN	DATE	DESCRIPTION	APPROVER
△	2006.08.3	Screw torque value changed from 10.4Lb-in to 12Lb-in	梁仁松
△	2006.08.3	Wire range changed from 22-14Awg to 22-12Awg	梁仁松
△	2006.08.3	Approval changed	梁仁松
△	10/29'12	Change the screw plating specification	Jacky
△	10/27'12	Change the dimensional tolerance	Jacky
△	10/27'12	Add the dimensional label	Jacky
△	10/27'12	Change the electrical specification	Jacky
△	6/05'14	change the structure	Guoxue
△	6/05'14	Change the dimensional tolerance	Guoxue

THIS IS CAD DRAWING, DO NOT REVISE MANUALLY!!!

MATERIALS ELECTRICAL
 RATED VOLTAGE & CURRENT: 300 V, 20 A
 WITHSTAND VOLTAGE: AC 2000 V/Min
 INSULATION RESISTANCE: 1000 MΩ OR MORE AT DC 500 V
 △ OPERATING TEMPERATURE RANG: -40 °C ~ +115 °C
 △ SCREW TORQUE VALUE: 12 Lb-In.
 △ WIRE RANGE: 22 - 12AWG
 1) MOLDED PARTS: POLYIMIDE 66, UL 94 V-0 BLACK
 2) TERMINAL: BRASS, 0.8t
 △ 3) TERMINAL SCREWS: STEEL, M3.5

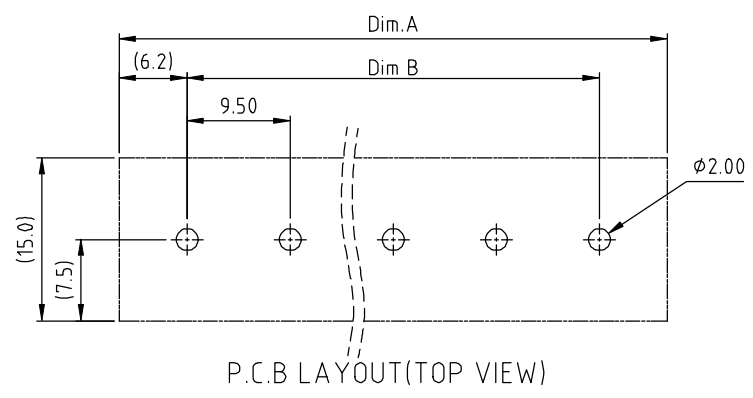
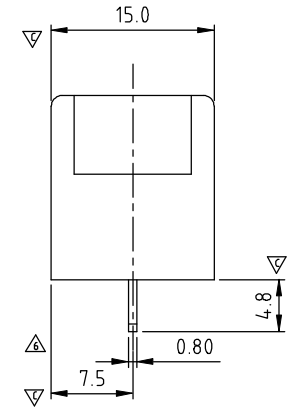
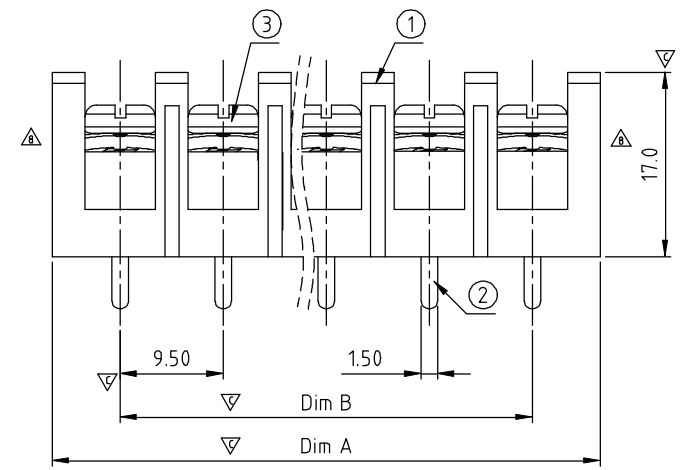
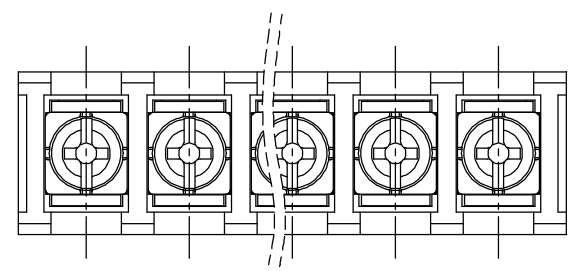
APPROVAL: us
 Critical dimension: ▽
 PART No.:

YK501 xx 0 x x 00G

NO. OF POLES
 04: 4 POLES
 05: 5 POLES
 06: 6 POLES
 :
 30: 30 POLES

MARK
 0: "@" MARK
 1: "ANY" MARK

TERMINAL & SCREW PLATED
 0: TERMINAL & SCREW: G/F
 △ 1: TERMINAL: G/F, SCREW: Zinc
 2: TERMINAL: Sn, SCREW: G/F
 △ 3: TERMINAL: Sn, SCREW: Zinc



N=Number of contacts
 Dimension A&B

DIM A	N×9.5+3.0
DIM B	(N-1)×9.5
Poles	Tolerance
4P	±0.20
5P-10P	±0.30
11P-24P	±0.40
25P-32P	±0.60

ANYTEK				CUSTOMER COPY			
ALL RIGHTS RESERVED. REPRODUCTION OR ISSUE TO THIRD PARTIES IN ANY FORM WHATSOEVER IS NOT PERMITTED WITHOUT WRITTEN AUTHORITY FROM THE PROPRIETOR. PROPERTY OF ANYTEK TECHNOLOGY CO., LTD							
TITLE		YK-501 W/O Flange&W/O Cover Series (4P-30P)					
PART NO.		YK501xx0xx00G		DWG NO.		8YK0001-501	
APPROVED		CHECKED		DESIGNED		DRAWN	
		Guoxue 2014.06.11		Guoxue 2014.06.11			
		SHEET: 01/01		UNIT: mm		Tolerance	
		REV.: E		SCALE: NONE		X. ±0.50	
						X.X ±0.30	
						X.XX ±0.10	
						X° ±1°	