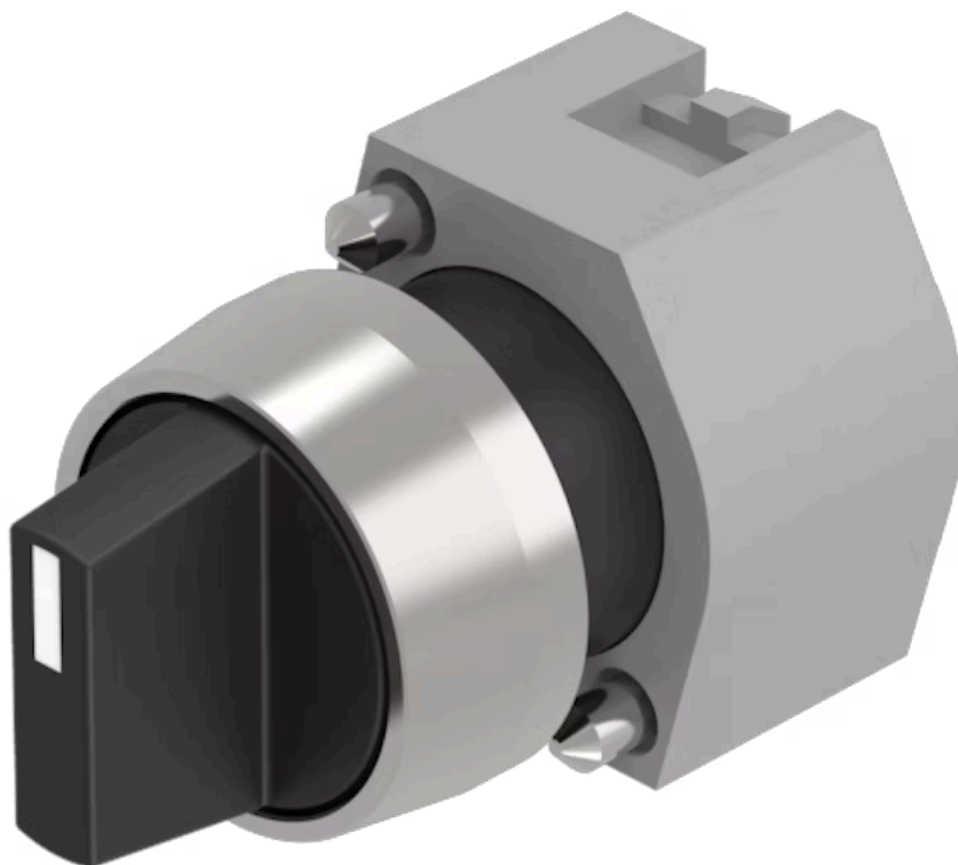


# Actuator

704.407.0



<https://eao.com/p/704.407.0>

Your product:

---



## 704.407.0 Actuator

### FRONT

Front bezel material:	Aluminium
Front dimension:	Ø 29 mm
Front bezel colour:	Nature

### MOUNTING

Design:	raised
---------	--------

### OPERATING-/INDICATION PART

Lever material:	plastic
Lever colour:	Black
Lever shape:	short

### ELECTRICAL CHARACTERISTICS

Standards:	The switches comply with the "Standards for low-voltage switching devices" DIN EN 60947-1
------------	---

### MECHANICAL CHARACTERISTIC

Weight:	0.034 kg
Switching angle:	42° left / 42° right
Switching action:	Maintained - Rest - Momentary
Switching positions:	3 positions
Mechanical lifetime:	≤2.5 Mio. cycles of operation

## AMBIENT CONDITION

<b>IP Protection:</b>	IP65 front side
<b>Operating temperature:</b>	- 40 °C ... + 55 °C
<b>Storage temperature:</b>	- 40 °C ... + 85 °C

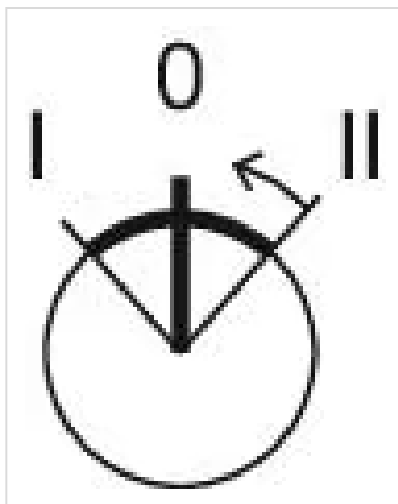
## OTHER

**Short Description:** Actuator, Ø 29 mm, non illuminative, Black, short, Nature, Aluminium, anodised, Maintained - Rest - Momentary

**max. number of switching elements:** 3

**Hints:** Max. 3 switching elements can be clipped on

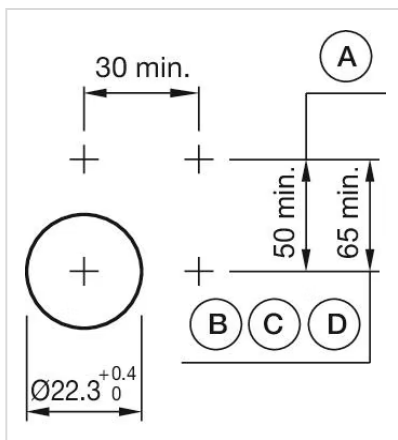
**Switching positions:**



**Wiring diagrams:**

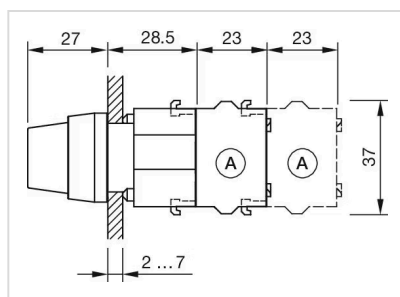


**Mounting cut-outs:**



A = Screw terminal  
B = Push-in terminal (PIT)  
C = Plug-in terminal 6.3 mm x 0.8 mm  
D = Double plug-in terminal 6.3 mm x 0.8 mm

**Dimension drawings:**



A = Screw terminal