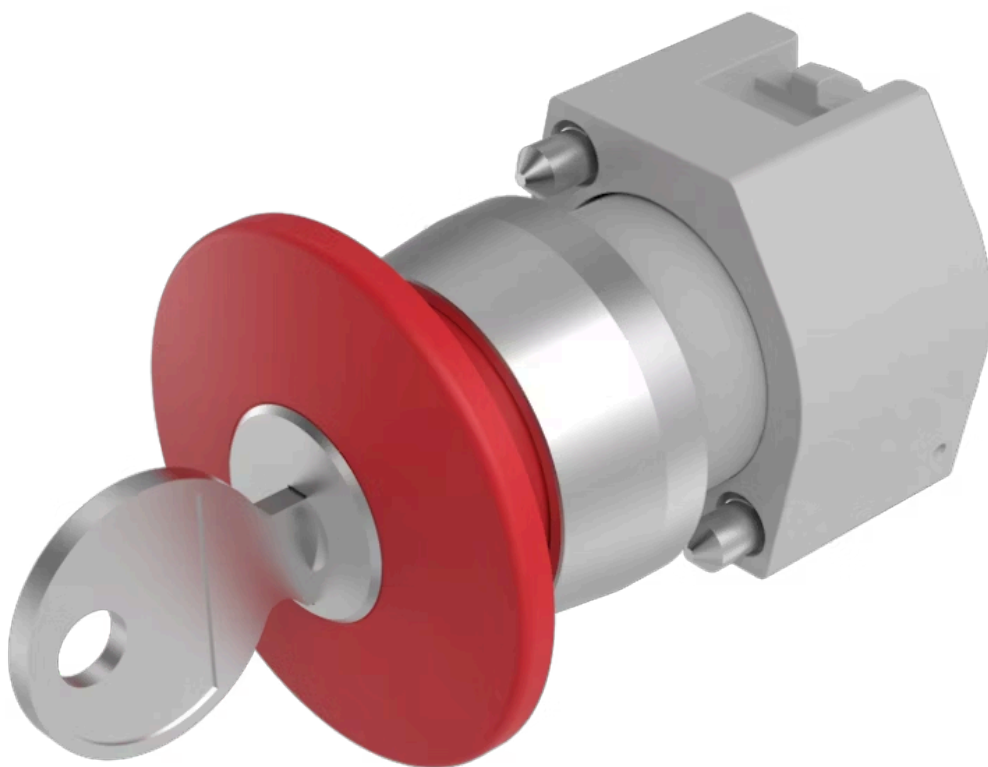


# Actuator

704.078.0



<https://eao.com/p/704.078.0>

Your product:

---



## 704.078.0 Actuator

### FRONT

Front bezel colour:	Nature
Front dimension:	Ø 40 mm
Front bezel material:	Aluminium

### MOUNTING

Design:	raised
---------	--------

### OPERATING-/INDICATION PART

Lens optics:	opaque
Lens colour:	Red
Lens shape:	mushroom-head
Lens material:	Plastic
Lens illumination:	non illuminative

### ELECTRICAL CHARACTERISTICS

Standards:	The switches comply with the "Standards for low-voltage switching devices" DIN EN 60947-1
------------	---

### MECHANICAL CHARACTERISTIC

Switching action:	Maintained
Operating Travel:	ca. 5.8 mm ± 0.2 mm
Mechanical lifetime:	≤50 000 cycles of operation
Weight:	0.063 kg

**Operating force:** 8 N

## **AMBIENT CONDITION**

**IP Protection:** IP65 front side

**Storage temperature:** – 40 °C ... + 85 °C

**Operating temperature:** – 40 °C ... + 55 °C

## **OTHER**

**max. number of switching elements:**

3

**Hints:**

The standard lock Ronis 251

**Short Description:**

Actuator, Ø 40 mm, mushroom-head, non illuminative, Red, Plastic, opaque, Nature, Aluminium, anodised, Maintained

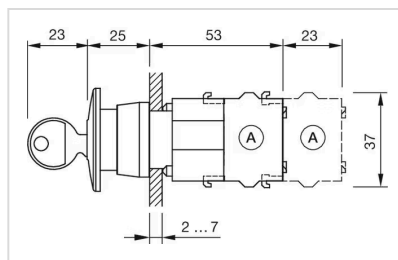
**Housing colour:**

Grey

**Housing material:**

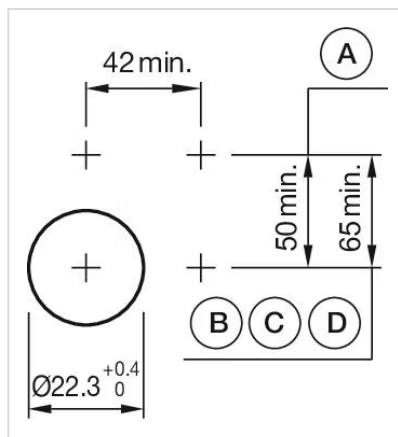
Plastic

**Dimension drawings:**



A = Screw terminal

**Mounting cut-outs:**



A = Screw terminal

B = Push-in terminal (PIT)

C = Plug-in terminal 6.3 mm x 0.8 mm

D = Double plug-in terminal 6.3 mm x 0.8 mm

**Wiring diagrams:**

