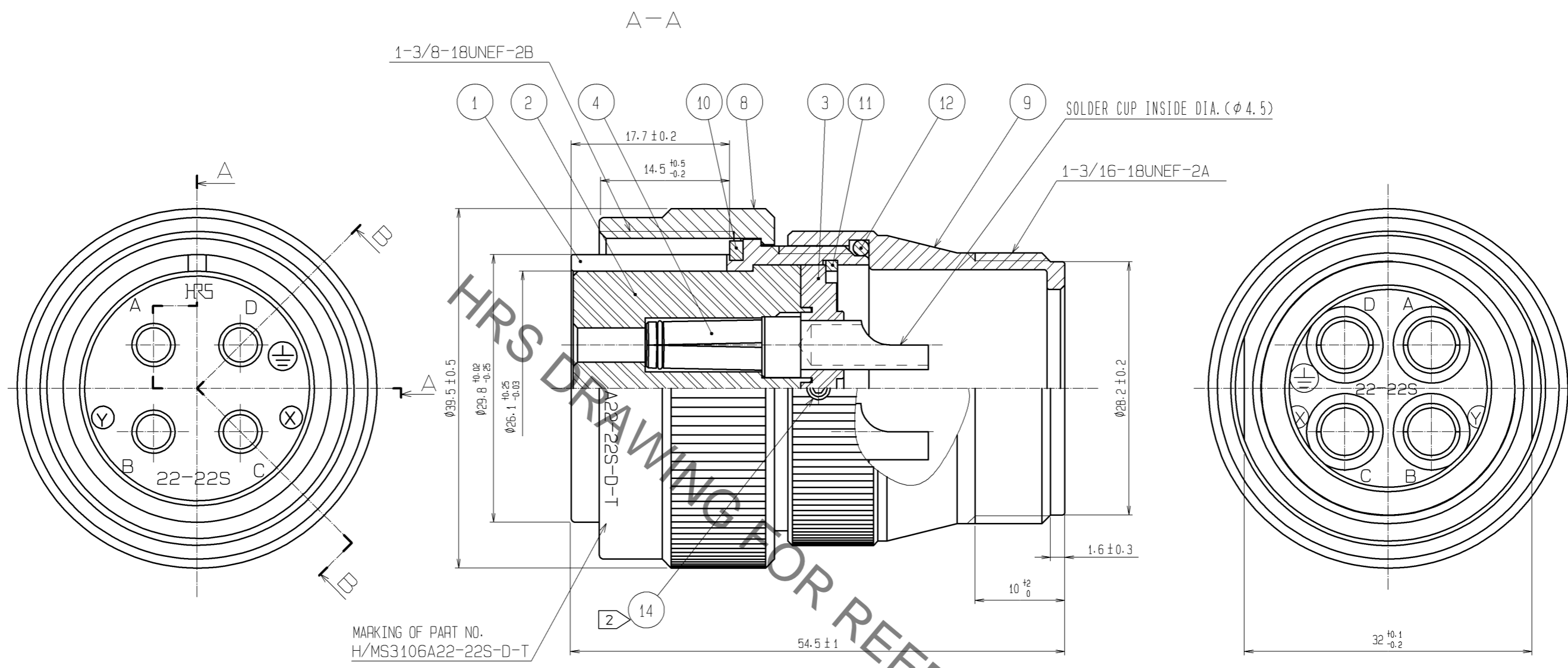


Jun.1.2019 Copyright 2019 HIROSE ELECTRIC CO., LTD. All Rights Reserved.
 In case of consideration for using Automotive equipment / device which demand high reliability, kindly contact our sales window correspondents.



NOTES
 1 ROTATION EXAMPLES OF REF. NO. ① AND ⑨ ARE SHOWN.
 2 REF. No. ⑭ : HEX SOCKET SET SCREW (HEX : 1.27).
 THE RECOMMENDED TIGHTENING TORQUE : 0.3~0.4 N·m.

NO.	MATERIAL	FINISH . REMARKS	NO.	MATERIAL	FINISH . REMARKS
7	PHOSPHOR BRONZE	SILVER PLATING	14	STAINLESS STEEL	
6	STAINLESS STEEL		13	BRASS	NICKEL PLATING
5	PHOSPHOR BRONZE	SILVER PLATING 4 μm min	12	SILICONE RUBBER	(BLACK)
4	PHOSPHOR BRONZE	SILVER PLATING 4 μm min	11	PHOSPHOR BRONZE	NICKEL PLATING
3	POLYPHENYLENE SULFIDE	(BLACK) UL94V-0	10	SILICONE RUBBER	(BLACK)
2	POLYPHENYLENE SULFIDE	(BLACK) UL94V-0	9	ALUMINUM ALLOY	BLACK CHROMATE TREATMENT(Cr3)
1	ALUMINUM ALLOY	BLACK CHROMATE TREATMENT(Cr3)	8	ALUMINUM ALLOY	BLACK CHROMATE TREATMENT(Cr3)

UNITS	SCALE	COUNT	DESCRIPTION OF REVISIONS	DESIGNED	CHECKED	DATE
mm	2 : 1	△				
APPROVED : EJ. KUNII			13.11.26	DRAWING NO. EDC3-110226-01		
CHECKED : HY. KISHI			13.11.26	PART NO. H/MS3106A22-22S-D-T(73)		
DESIGNED : KN. IKEHARA			13.11.22	CODE NO. CL120-0324-5-73		
DRAWN : KN. IKEHARA			13.11.22	1/1		