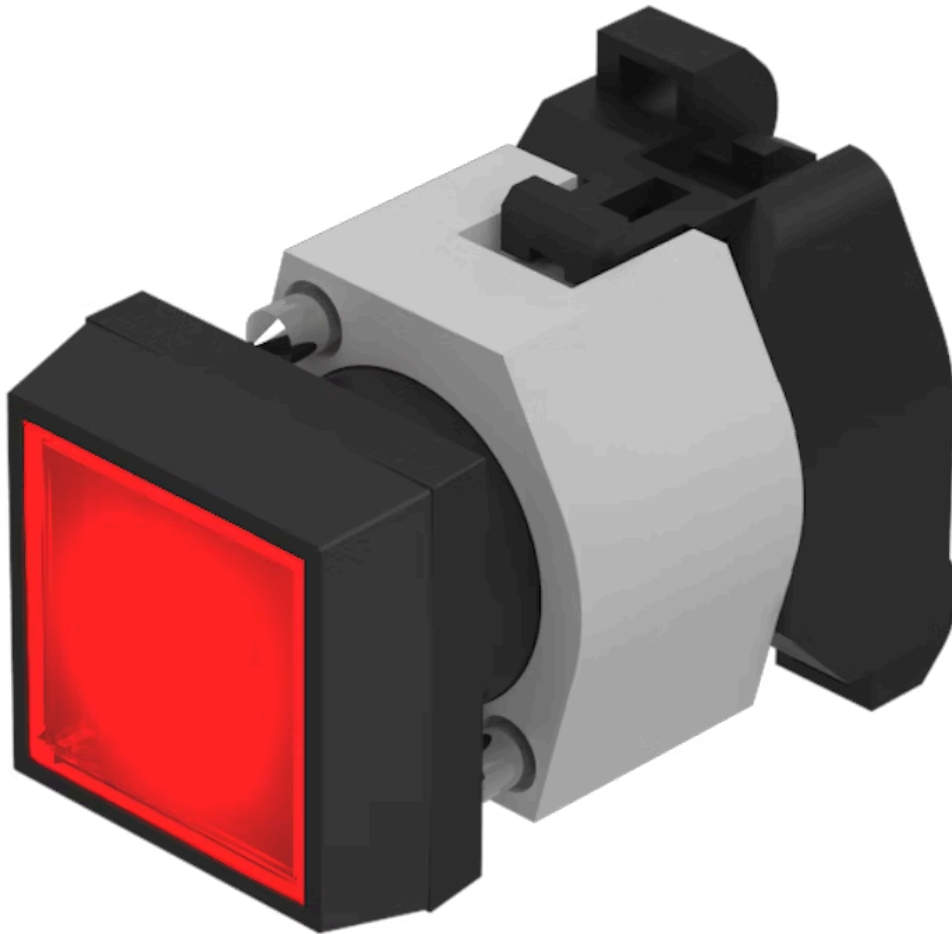


Actuator

704.229.2



<https://eao.com/p/704.229.2>

Your product:



704.229.2 Actuator

FRONT

Front form:	square
Front dimension:	30 mm x 30 mm
Front bezel material:	Plastic
Front bezel colour:	Black

MOUNTING

Design:	raised
---------	--------

OPERATING-/INDICATION PART

Lens optics:	transparent
Lens illumination:	illuminative
Lens material:	Plastic
Lens shape:	flush
Lens colour:	Red

ELECTRICAL CHARACTERISTICS

Standards:	The switches comply with the "Standards for low-voltage switching devices" DIN EN 60947-1
------------	---

MECHANICAL CHARACTERISTIC

Mechanical lifetime:	≤3 Mio. cycles of operation
Operating force:	8 N
Weight:	0.056 kg

Terminal:	Screw terminal
Operating Travel:	ca. 5.8 mm ± 0.2 mm
Switching action:	Momentary

AMBIENT CONDITION

Storage temperature:	– 40 °C ... + 85 °C
IP Protection:	IP65 front side
Operating temperature:	– 40 °C ... + 55 °C

OTHER

max. number of switching elements:	3
---	---

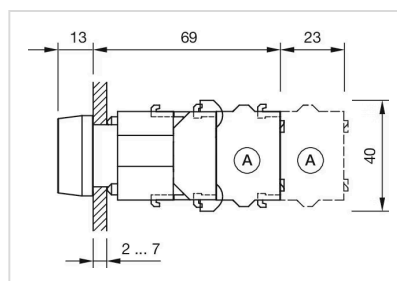
Hints:	Frontring with protective cover to be mounted with a torque of 0.4 Nm onto actuator,Max. 3 switching elements can be clipped on
---------------	---

Housing colour:	Black
------------------------	-------

Short Description:	Actuator, 30 mm x 30 mm, flush, illuminative, Red, Plastic, transparent, square, Black, Plastic, Momentary, Screw terminal
---------------------------	--

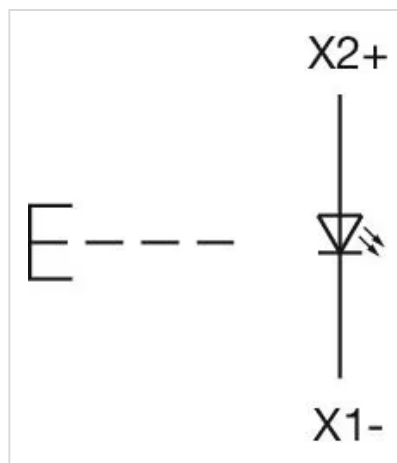
Housing material:	Plastic
--------------------------	---------

Dimension drawings:

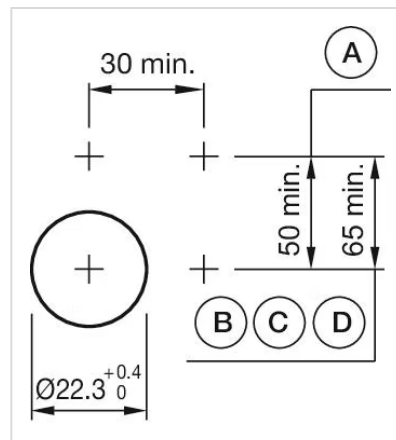


A = Screw terminal

Wiring diagrams:



Mounting cut-outs:



A = Screw terminal

B = Push-in terminal (PIT)

C = Plug-in terminal 6.3 mm x 0.8 mm

D = Double plug-in terminal 6.3 mm x 0.8 mm