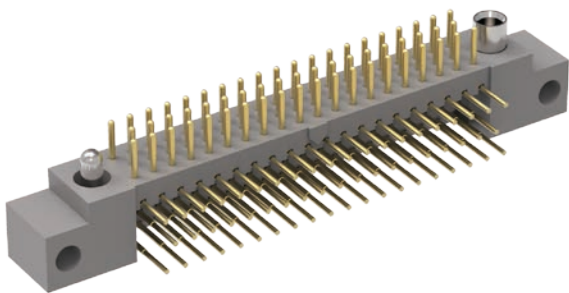


R Series

High-Density
0.075"
(1.905mm)



3
Row

RM – Three-Row, Right-Angle, Board-Mount Plug

Contact Spacing: 0.075" (1.91 mm)
R-Series products are high-density, plastic connectors commonly used in board-to-board applications. Approved to MIL-55302 standard.

Sample Part Number Format: RM352-152-321-5500



SERIES	ROWS	STYLE	BODY MATERIAL	SIZE	PLATING	POLARIZATION	OPTIONS
0.075" Plastic Rectangular Connector (Plug)	3 – 3-Row (11-206 contacts)	5 – Plug, right-angle with mounting ears 7 – Plug, right-angle without mounting ears	2 – Polyphenylene sulfide (PPS)	011 – 11 contacts 023 – 23 contacts 035 – 35 contacts 047 – 47 contacts 059 – 59 contacts 071 – 71 contacts 080 – 80 contacts 092 – 92 contacts 104 – 104 contacts 122 – 122 contacts 140 – 140 contacts 152 – 152 contacts 182 – 182 contacts 206 – 206 contacts	1 – Gold 2 – Pre-tinned, SnPb alloy ‡ 3 – Pre-tinned, SAC305 alloy	00 – None XX – See page 140 for codes 70 – Same as above, but without Loctite® (customer-keyed)	BN – Bond #1-72, small pattern hex nuts into mounting ears

TERMINATION

31 – Plated thru-hole, 0.109" x 0.020" Ø
32 – Plated thru-hole, 0.140" x 0.020" Ø
33 – Plated thru-hole, 0.172" x 0.020" Ø
34 – Plated thru-hole, 0.109" x 0.016" Ø
35 – Plated thru-hole, 0.140" x 0.016" Ø
36 – Plated thru-hole, 0.172" x 0.016" Ø
37 – Plated thru-hole, 0.250" x 0.020" Ø

HARDWARE

0256 – None
55 – Guide set
57 – Two guide pins
58 – Two guide sockets
29 – Fixed jackset
30 – Fixed jackset, reversed
19 – Two fixed jackscrews
20 – Two fixed jackscrews
59 – Hex turning jackset, 0.200"
60 – Hex turning jackset reversed, 0.200"
61 – Two hex turning jackscrews, 0.200"
62 – Two hex turning jackscrews, 0.200"
64 – Turning jackset, 0.490"

Notes:
‡ Not RoHS-compliant

PLEASE CONSULT THE AIRBORN WEBSITE FOR THE LATEST REVISION OF THIS DOCUMENT PRIOR TO BEGINNING ANY DESIGN WORK.

Mates with

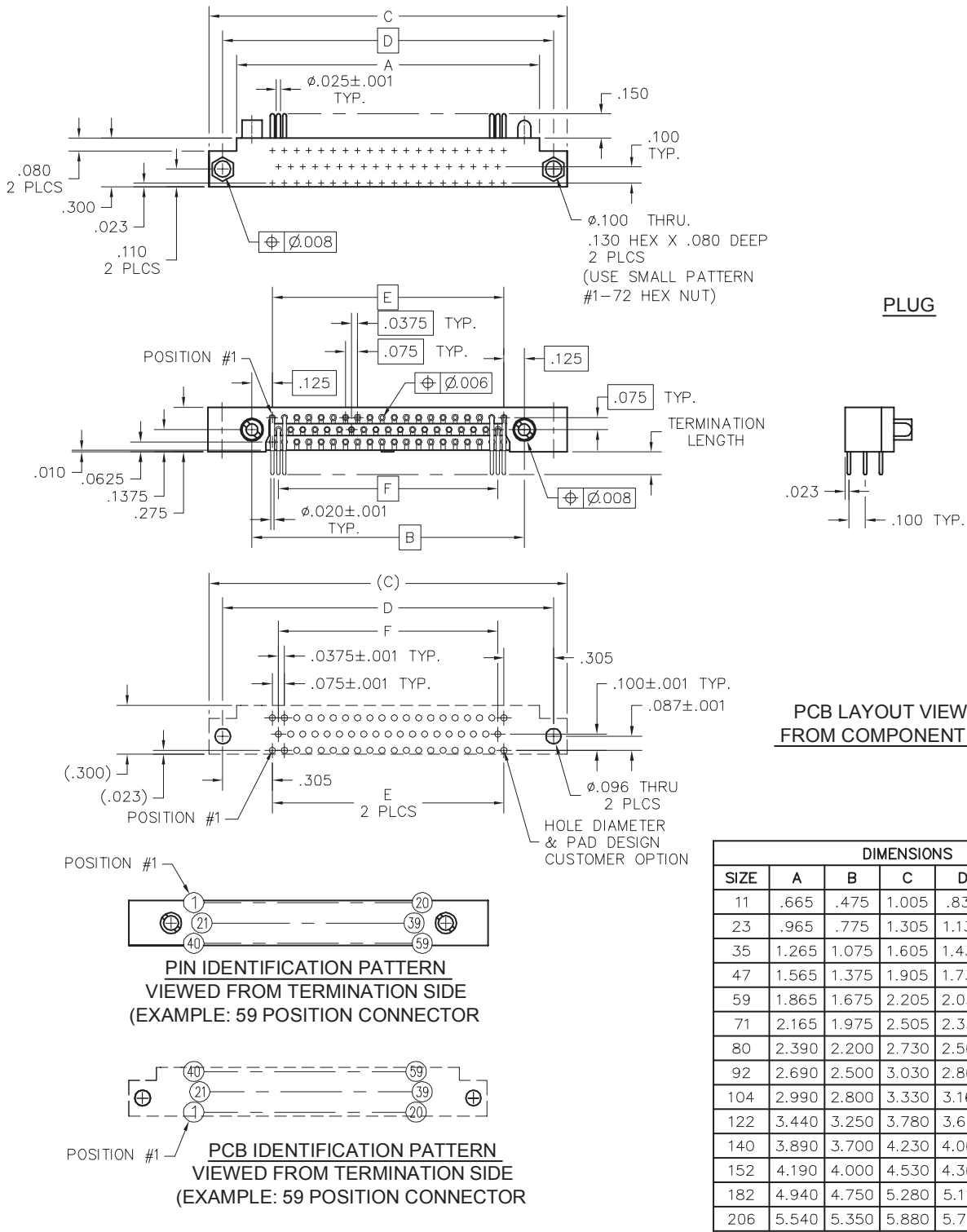
- RM322 & RM342 — Three-row, straight receptacle
- RM362 & RM382 — Three-row, right-angle receptacle
- RA3 — Three-row, I/O receptacle

Terminations



RM – Three-Row, Right-Angle, Board-Mount Plug

Plastic ▪ 3-Row ▪ 11-206 Contacts



PLEASE CONSULT THE AIRBORN WEBSITE FOR THE LATEST REVISION OF THIS DOCUMENT PRIOR TO BEGINNING ANY DESIGN WORK.