

Customer Information Sheet

DRAWING No.: M80-400000F2-XX-XXX-00-000

IF IN DOUBT - ASK

©

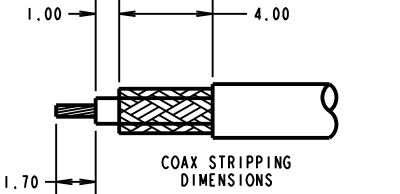
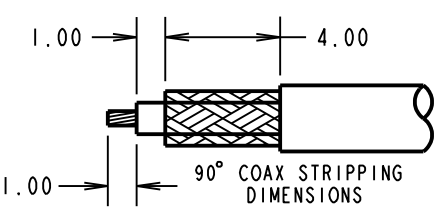
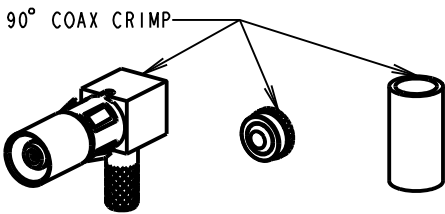
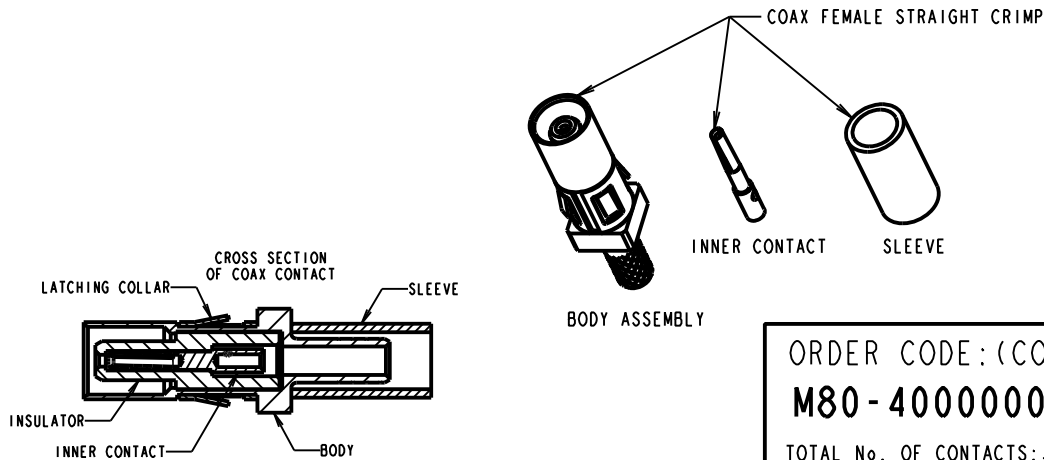
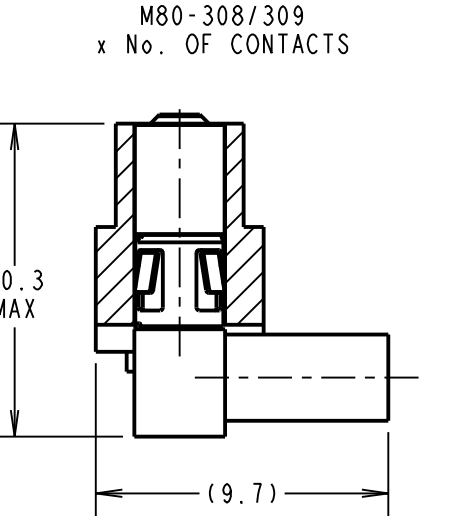
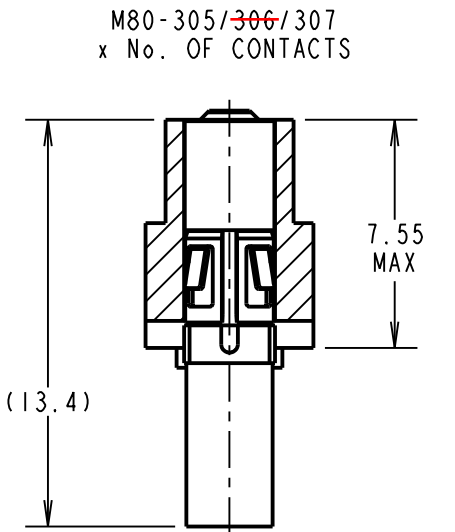
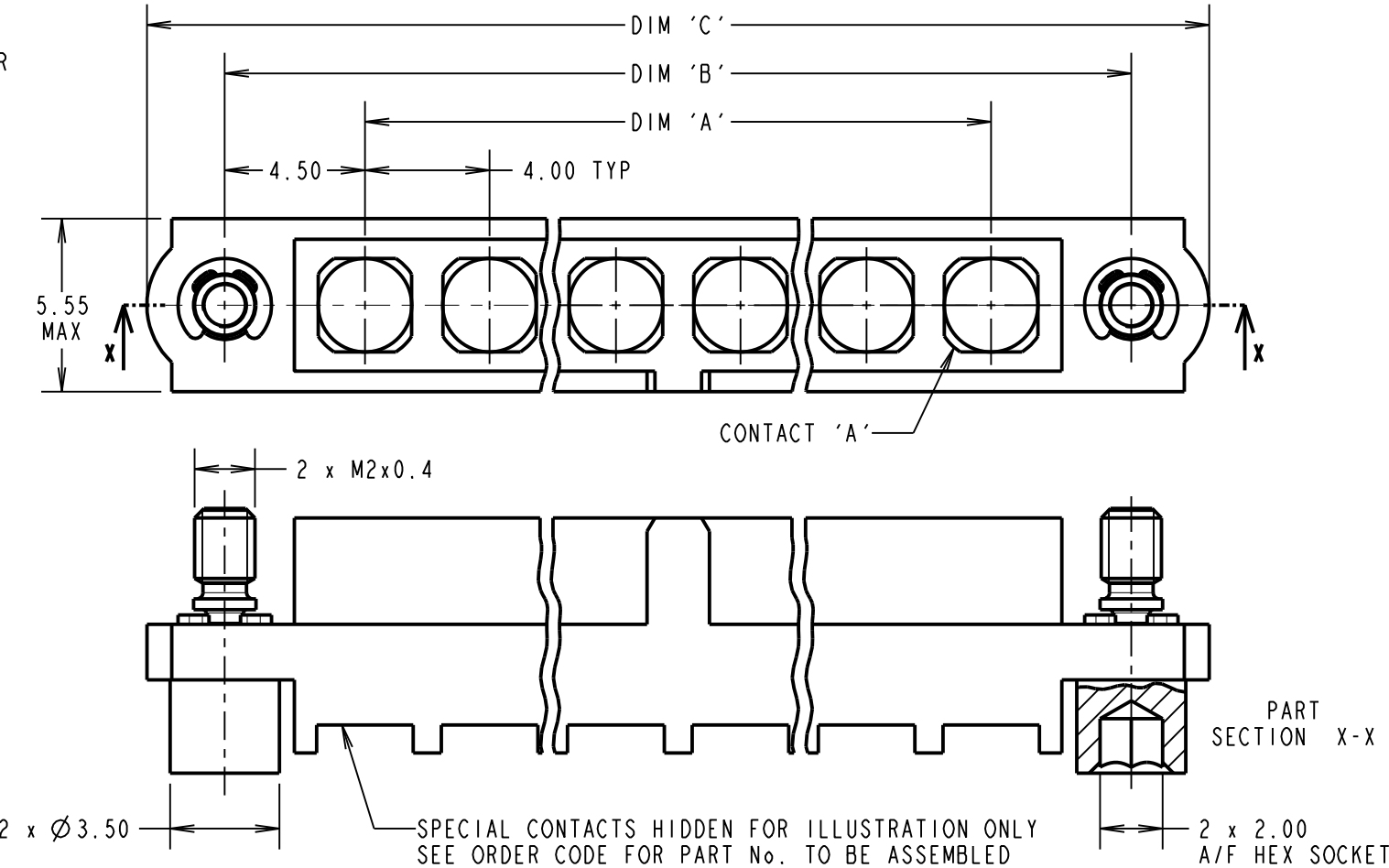
NOT TO SCALE

THIRD ANGLE PROJECTION

ALL DIMENSIONS IN mm

SPECIFICATIONS:
MATERIAL:
MOULDING: GLASS FILLED PPS, UL94V-0, BLACK
COAX CONTACT:
BODY, SLEEVE, END PLUG = COPPER ALLOY
INNER CONTACT, LATCHING COLLAR = BERYLLIUM COPPER
INSULATOR = PTFE
JACKSCREW, CIRCLIP = STAINLESS STEEL
FINISH:
COAX CONTACT
BODY, SLEEVE, INNER CONTACT, END PLUG = GOLD
LATCHING COLLAR: = NICKEL
ELECTRICAL:
INSULATION RESISTANCE = 100MΩ MIN
COAX CONTACT:
FREQUENCY RANGE = 6GHz
IMPEDANCE = 50Ω
V.S.W.R = 1.05 + (0.04 x FREQUENCY) GHz MAX
CONTACT RESISTANCE = 6mΩ MAX
INSULATION RESISTANCE = 10⁶MΩ @250V AC
OPERATING VOLTAGE = 180V AC @ 500mA
MAXIMUM VOLTAGE = 1000V AC
MECHANICAL:
DURABILITY = 500 OPERATIONS
COAX CONTACT:
INSERTION FORCE = 8N MAX
WITHDRAWAL FORCE = 0.5N MIN
ENVIRONMENTAL:
TEMPERATURE RANGE = -55°C TO +125°C
PACKING:
BAG
FOR COMPLETE SPECIFICATION SEE COMPONENT SPECIFICATION C005XX (LATEST ISSUE)

COAX CRIMP AND SOLDER CONTACTS ONLY



DIMENSION	CALCULATION
DIM 'A'	4 x No. OF CONTACTS - 4.00
DIM 'B'	4 x No. OF CONTACTS + 5.00
DIM 'C'	4 x No. OF CONTACTS + 10.0
EXAMPLE: CONNECTOR WITH 08 COAX CONTACTS, M80-400000F2-08-305-00-000 DIM 'A' = 28.00mm, DIM 'B' = 37.00mm, DIM 'C' = 42.0mm	

ORDER CODE:(COAX CRIMP/SOLDER)
M80-400000F2-XX-XXX-00-000
TOTAL No. OF CONTACTS: 02 TO 12
SPECIAL CONTACTS:
305 = COAX CONTACT CRIMP 2.0mm M80-305
~~306 = COAX CONTACT CRIMP 2.4mm M80-306~~
307 = COAX CONTACT CRIMP 2.7mm M80-307
308 = 90° COAX CONTACT CRIMP/SOLDER 2.0mm M80-308
309 = 90° COAX CONTACT CRIMP/SOLDER 2.7mm M80-309

- NOTES:
- CONNECTORS ARE SUPPLIED WITH CONTACTS LOOSE.
 - COAX CONTACT IS SUPPLIED AS A KIT OF PARTS: BODY, INSULATOR AND LATCHING COLLAR ARE PRE-ASSEMBLED. SLEEVE AND INNER CONTACT ARE SEPARATE.
 - FOR EXTRA COAX CONTACTS, USE PART NUMBER M80-305/~~306~~/307/308/309.
 - RECOMMENDED HAND CRIMP TOOL FOR COAX INNER CONTACT = Z80-292 WITH POSITIONER Z80-291 AND RECOMMENDED HAND CRIMP TOOL AND DIE SET FOR COAX SLEEVE = Z80-293.
 - COAX CONTACT EXTRACTION TOOL = Z80-290.
 - INSTRUCTION SHEETS ARE AVAILABLE.

MGP	6	04.12.19	21540
NAME	ISS.	DATE	C/NOTE
APPROVED: MGP			
CHECKED: RP			
DRAWN: C.PENROSE			
CUSTOMER REF.:			
ASSEMBLY DRG:			

HARWIN
www.harwin.com
technical@harwin.com

THIS DRAWING AND ANY INFORMATION OR DESCRIPTIVE MATTER SET OUT HEREON ARE CONFIDENTIAL AND COPYRIGHT PROPERTY OF THE HARWIN GROUP AND MUST NOT BE DISCLOSED, LOANED, COPIED OR USED FOR MANUFACTURING, TENDERING OR FOR ANY OTHER PURPOSE WITHOUT THEIR WRITTEN PERMISSION.

TOLERANCES
X. = ±1mm
X.X = ±0.50mm
X.XX = ±0.20mm
X.XXX = ±0.01mm
ANGLES = ±5°
UNLESS STATED

MATERIAL:
SEE ABOVE
FINISH: SEE ABOVE
S/AREA: mm²

TITLE: DATAMATE MIX-TEK FEMALE ASSEMBLY WITH HEX SOCKET J/SCREWS
DRAWING NUMBER: M80-400000F2-XX-XXX-00-000
SHT 5 OF 8

Customer Information Sheet

DRAWING No.: M80-4000000F2-XX-XXX-00-000

IF IN DOUBT - ASK

©

NOT TO SCALE

THIRD ANGLE PROJECTION

ALL DIMENSIONS IN mm

SPECIFICATIONS:

MATERIAL:

MOULDING: GLASS FILLED PPS, UL94V-0, BLACK

POWER CONTACT:

BODY = COPPER ALLOY

LATCHING COLLAR = BERYLLIUM COPPER

JACKSCREW, CIRCLIP = STAINLESS STEEL

FINISH:

POWER CONTACT:

BODY, SLEEVE, INNER CONTACT, END PLUG = GOLD

LATCHING COLLAR = NICKEL

ELECTRICAL:

WORKING VOLTAGE = 800V AC/DC

VOLTAGE PROOF = 1200V AC/DC

INSULATION RESISTANCE = 100M Ω MIN

POWER CONTACT:

CONTACT RESISTANCE = 6m Ω MAX

CURRENT RATING = M80-325 = 20A MAX WITH 12AWG

M80-326 = 15A MAX WITH 14AWG

M80-327 = 10A MAX WITH 16AWG

M80-328 = 8A MAX WITH 18AWG

M80-329 = 5A MAX WITH 20AWG

M80-32A = 20A MAX WITH 12AWG

M80-32B = 15A MAX WITH 14AWG

M80-32C = 10A MAX WITH 16AWG

M80-PF5 = 40A MAX WITH 10AWG

CONTACT AS SPECIFIED

MECHANICAL:

DURABILITY = 500 OPERATIONS

POWER CONTACT:

INSERTION FORCE:

M80-325/326/327/328/329/

32A/32B/32C = 8N MAX

M80-PF5 = 15N MAX

WITHDRAWAL FORCE = 0.5N MIN

ENVIRONMENTAL:

TEMPERATURE RANGE:

M80-325/326/327/328/329/

32A/32B/32C = -55°C TO +125°C

M80-PF5 = -55°C TO +150°C

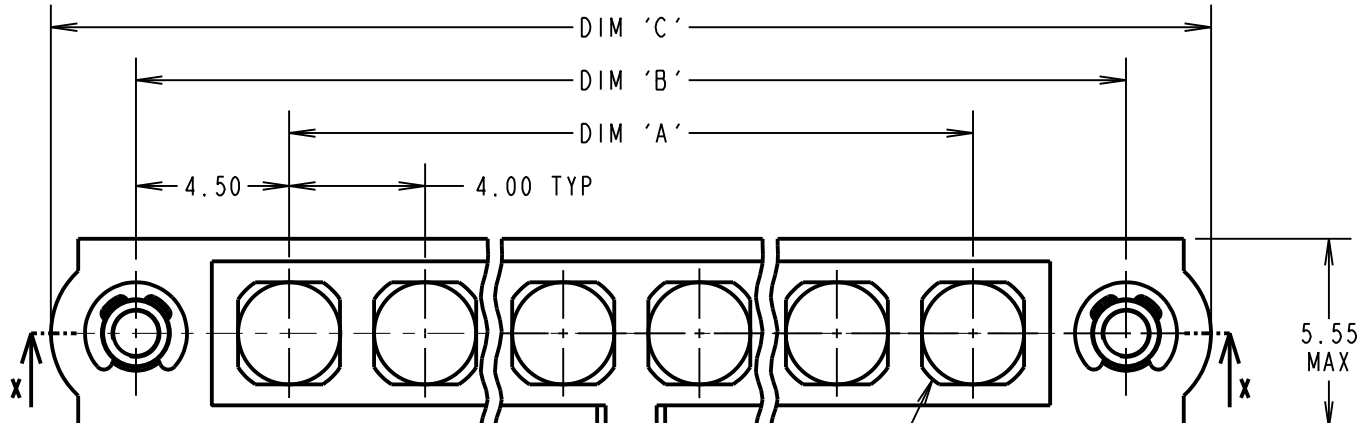
PACKING:

BAG

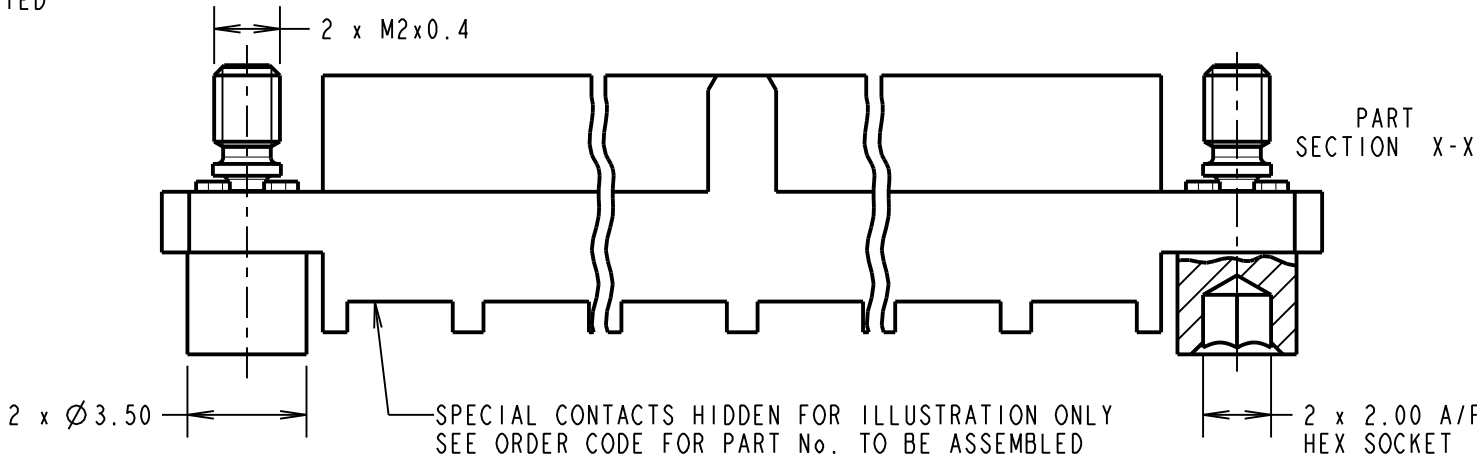
FOR COMPLETE SPECIFICATION SEE COMPONENT

SPECIFICATION C005XX (LATEST ISSUE)

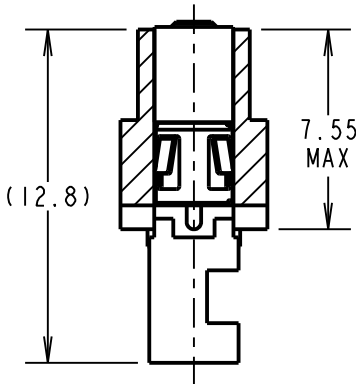
POWER CRIMP AND SOLDER CONTACTS ONLY



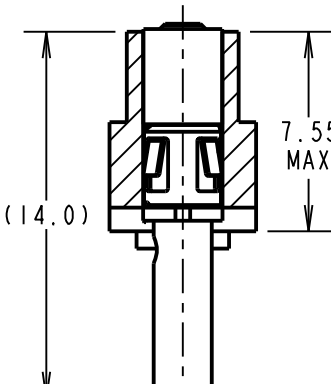
CONTACT 'A'



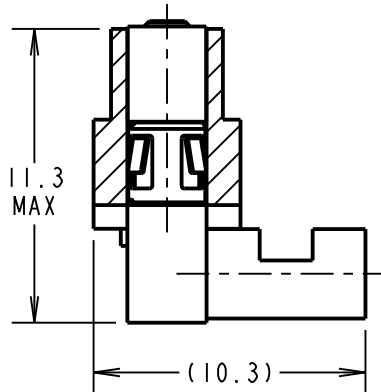
M80-325/326/327
x No. OF CONTACTS



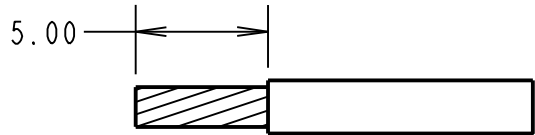
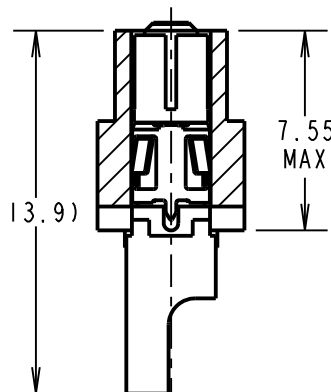
M80-328/329
x No. OF CONTACTS



M80-32A/32B/32C
x No. OF CONTACTS



M80-PF5
x No. OF CONTACTS



POWER CABLE
STRIPPING DIMENSIONS

ORDER CODE: (POWER CRIMP/SOLDER)

M80-4000000F2-XX-XXX-00-000

TOTAL No. OF CONTACTS: _____
02 TO 12

SPECIAL CONTACTS: _____

325 = POWER CONTACT SOLDER 12AWG M80-325
326 = POWER CONTACT SOLDER 14AWG M80-326
327 = POWER CONTACT SOLDER 16AWG M80-327
328 = POWER CONTACT SOLDER OR CRIMP 18AWG M80-328
329 = POWER CONTACT SOLDER OR CRIMP 20AWG M80-329
32A = 90° POWER CONTACT SOLDER 12AWG M80-32A
32B = 90° POWER CONTACT SOLDER 14AWG M80-32B
32C = 90° POWER CONTACT SOLDER 16AWG M80-32C
PF5 = POWER CONTACT SOLDER 10AWG M80-PF5

NOTES:

- CONNECTORS ARE SUPPLIED WITH CONTACTS LOOSE.
- FOR EXTRA POWER CONTACTS, USE PART NUMBERS:
M80-325/326/327/328/329/32A/32B/32C/PF5.
- POWER CONTACT EXTRACTION TOOL = Z80-290.
- INSTRUCTION SHEETS ARE AVAILABLE.
- RECOMMENDED HAND CRIMP TOOL FOR CONTACTS
M80-328/329 = Z80-294 WITH POSITIONER Z80-295.
- POWER CONTACT WIRE, STRIP BY 5.00mm MINIMUM.

HARWIN

www.harwin.com
technical@harwin.com

THIS DRAWING AND ANY
INFORMATION OR DESCRIPTIVE
MATTER SET OUT HEREON ARE
CONFIDENTIAL AND COPYRIGHT
PROPERTY OF THE HARWIN
GROUP AND MUST NOT BE
DISCLOSED, LOANED, COPIED
OR USED FOR MANUFACTURING,
TENDERING OR FOR ANY
OTHER PURPOSE WITHOUT
THEIR WRITTEN PERMISSION.

TOLERANCES

X. = ± 1 mm
X.X = ± 0.50 mm
X.XX = ± 0.20 mm
X.XXX = ± 0.01 mm

ANGLES = $\pm 5^\circ$

UNLESS STATED

MATERIAL:

SEE ABOVE

FINISH:

SEE ABOVE

S/AREA:

mm²

TITLE:

DATAMATE MIX-TEK
FEMALE ASSEMBLY WITH
HEX SOCKET J/SCREWS

DRAWING NUMBER:

M80-4000000F2-XX-XXX-00-000

SHT

6

OF 8

MGP 6 04.12.19 21540

NAME ISS. DATE C/NOTE

APPROVED: MGP

CHECKED: RP

DRAWN: C.PENROSE

CUSTOMER REF.:

ASSEMBLY DRG:

Customer Information Sheet

DRAWING No.: M80-400000F2-XX-XXX-00-000

IF IN DOUBT - ASK

©

NOT TO SCALE

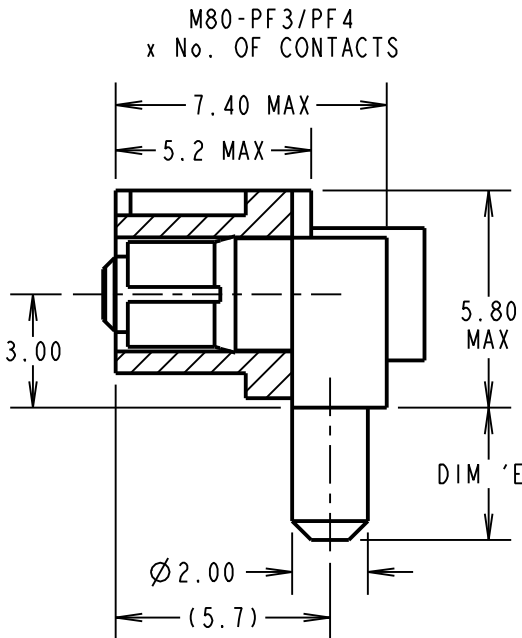
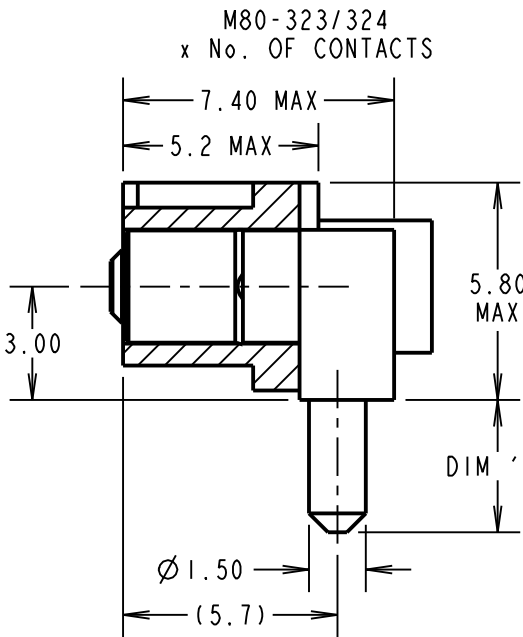
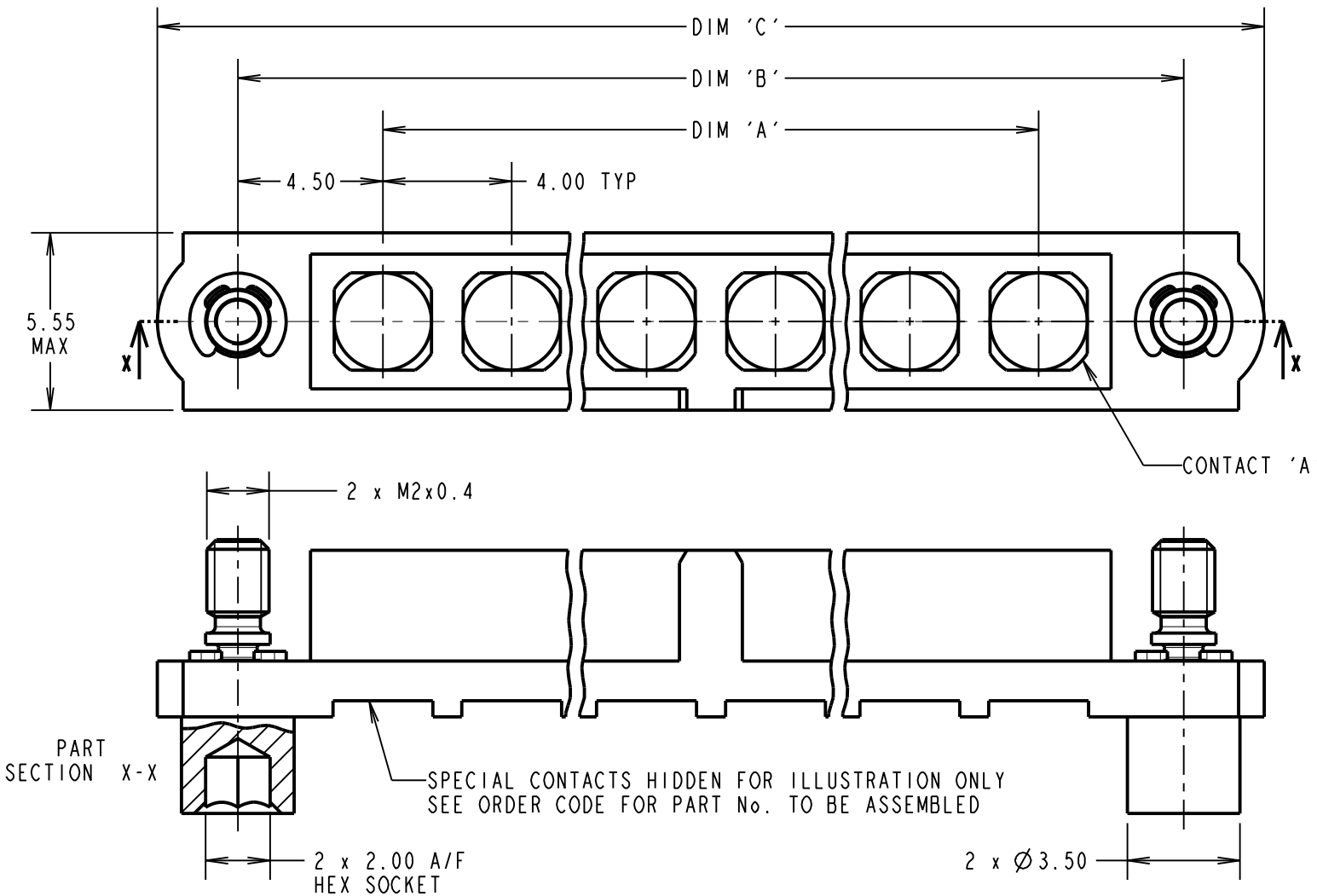
THIRD ANGLE PROJECTION

ALL DIMENSIONS IN mm

SPECIFICATIONS:

MATERIAL:
MOULDING: GLASS FILLED PPS, UL94V-0, BLACK
POWER CONTACT: COPPER ALLOY
COAX CONTACT:
BODY = COPPER ALLOY
INNER CONTACT = COPPER ALLOY
INSULATOR = PTFE
JACKSCREW, CIRCLIP = STAINLESS STEEL
FINISH:
POWER CONTACT: GOLD
COAX CONTACT: BODY, INNER CONTACT = GOLD
ELECTRICAL:
WORKING VOLTAGE = 800V AC/DC
VOLTAGE PROOF = 1200V AC/DC
INSULATION RESISTANCE = 100MΩ MIN
POWER CONTACT:
CONTACT RESISTANCE = 6mΩ MAX
CURRENT RATING:
M80-323/324 = 20A MAX
M80-PF3/PF4 = 40A MAX
MECHANICAL:
DURABILITY = 500 OPERATIONS
POWER CONTACT:
INSERTION FORCE:
M80-323/324 = 8N MAX
M80-PF3/PF4 = 15N MAX
WITHDRAWAL FORCE = 0.5N MIN
ENVIRONMENTAL:
TEMPERATURE RANGE:
M80-323/324 = -55°C TO +125°C
M80-PF3/PF4 = -55°C TO +150°C
PACKING:
TUBE
FOR COMPLETE SPECIFICATION SEE COMPONENT
SPECIFICATION C005XX (LATEST ISSUE)

PC TAIL HORIZONTAL CONTACTS ONLY



ORDER CODE:
(FEMALE HORIZONTAL POWER CONTACTS ONLY)

M80-400000F2-XX-XXX-00-000

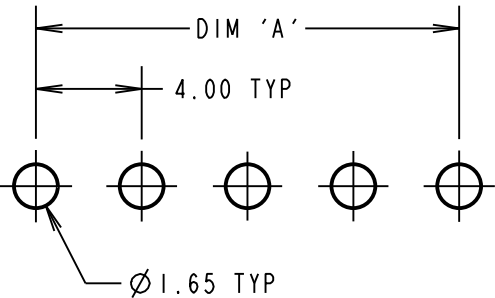
TOTAL No. OF CONTACTS: _____
02 TO 12

FEMALE HORIZONTAL POWER CONTACTS:

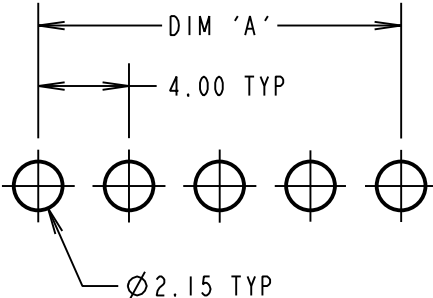
323 = 20A POWER CONTACT PC TAIL 3.5mm M80-323
324 = 20A POWER CONTACT PC TAIL 5.0mm M80-324
PF3 = 40A POWER CONTACT PC TAIL 3.5mm M80-PF3
PF4 = 40A POWER CONTACT PC TAIL 5.0mm M80-PF4

DIMENSION	CALCULATION
DIM 'A'	4 x No. OF CONTACTS - 4.00
DIM 'B'	4 x No. OF CONTACTS + 5.00
DIM 'C'	4 x No. OF CONTACTS + 10.0
DIM 'D'	M80-323 = 3.50mm, M80-324 = 5.00mm
DIM 'E'	M80-PF3 = 3.50mm, M80-PF4 = 5.00mm
EXAMPLE 1: CONNECTOR WITH 10 POWER CONTACTS 3.5mm, M80-400000F2-10-323-00-000 DIM 'A' = 36.00mm, DIM 'B' = 45.00mm, DIM 'C' = 50.0mm DIM 'D' = 3.50mm	

RECOMMENDED PCB LAYOUT FOR
POWER CONTACTS: M80-323/324
TOLERANCE = +/-0.05



RECOMMENDED PCB LAYOUT FOR
POWER CONTACTS: M80-PF3/PF4
TOLERANCE = +/-0.05



MGP	6	04.12.19	21540
NAME	ISS.	DATE	C/NOTE
APPROVED: MGP			
CHECKED: RP			
DRAWN: C.PENROSE			
CUSTOMER REF.:			
ASSEMBLY DRG:			

HARWIN

www.harwin.com
technical@harwin.com

THIS DRAWING AND ANY
INFORMATION OR DESCRIPTIVE
MATTER SET OUT HEREON ARE
CONFIDENTIAL AND COPYRIGHT
PROPERTY OF THE HARWIN
GROUP AND MUST NOT BE
DISCLOSED, LOANED, COPIED
OR USED FOR MANUFACTURING,
TENDERING OR FOR ANY
OTHER PURPOSE WITHOUT
THEIR WRITTEN PERMISSION.

TOLERANCES
X. = ±1mm
X.X = ±0.50mm
X.XX = ±0.20mm
X.XXX = ±0.01mm
ANGLES = ±5°
UNLESS STATED

MATERIAL:

SEE ABOVE

FINISH:

SEE ABOVE

S/AREA:

mm²

TITLE: DATAMATE MIX-TEK
FEMALE ASSEMBLY WITH
HEX SOCKET J/SCREWS

DRAWING NUMBER:

M80-400000F2-XX-XXX-00-000

SHT
8 OF 8