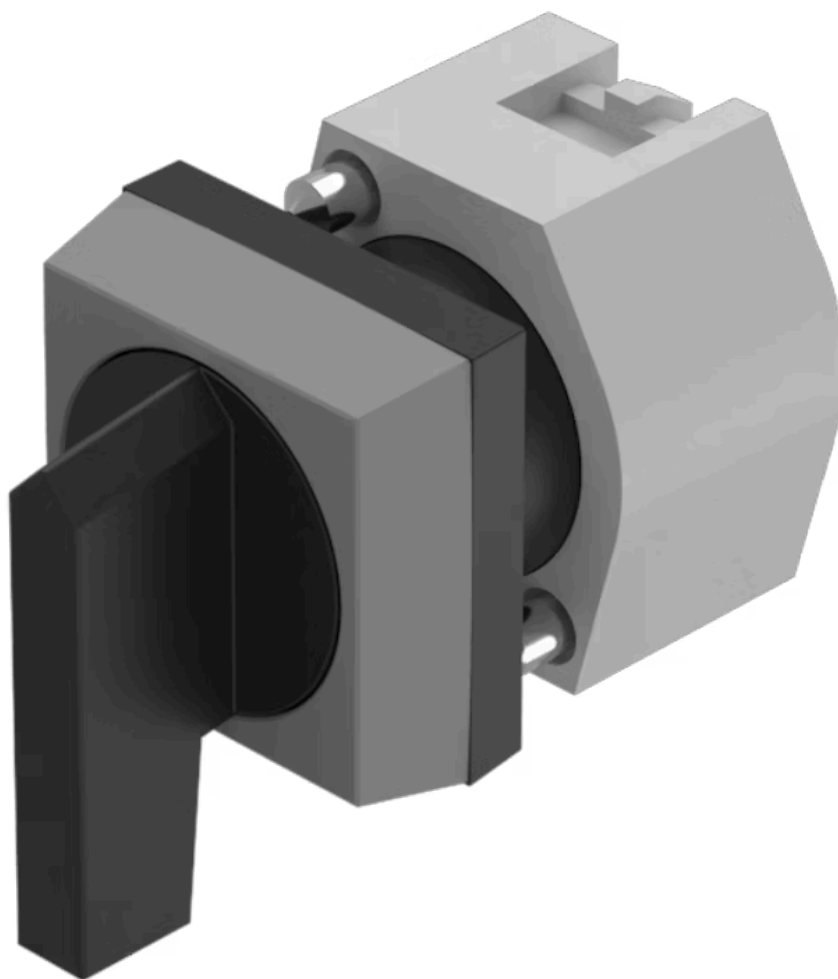


# Actuator

704.296.0



<https://eao.com/p/704.296.0>

Your product:

---



## 704.296.0 Actuator

### FRONT

Front bezel colour:	Grey
Front dimension:	30 mm x 30 mm
Front bezel material:	Plastic

### MOUNTING

Design:	raised
---------	--------

### OPERATING-/INDICATION PART

Lever shape:	long
Lever material:	plastic
Lever colour:	Black

### ELECTRICAL CHARACTERISTICS

Standards:	The switches comply with the "Standards for low-voltage switching devices" DIN EN 60947-1
------------	---

### MECHANICAL CHARACTERISTIC

Switching action:	Maintained - Rest - Momentary
Switching positions:	3 positions
Mechanical lifetime:	≤2.5 Mio. cycles of operation
Switching angle:	42° left / 42° right
Weight:	0.034 kg

## AMBIENT CONDITION

**Storage temperature:** – 40 °C ... + 85 °C

**Operating temperature:** – 40 °C ... + 55 °C

**IP Protection:** IP65 front side

## OTHER

**max. number of switching elements:** 3

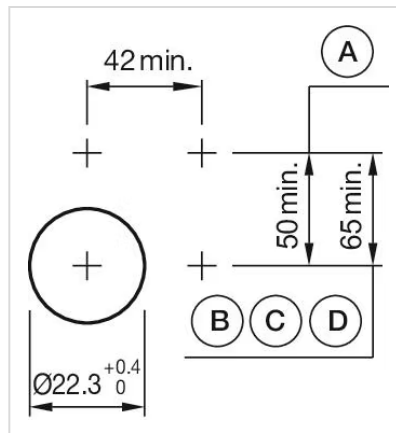
**Short Description:** Actuator, 30 mm x 30 mm, non illuminative, Black, long, Grey, Plastic, Maintained - Rest - Momentary

**Hints:** Max. 3 switching elements can be clipped on

**Wiring diagrams:**

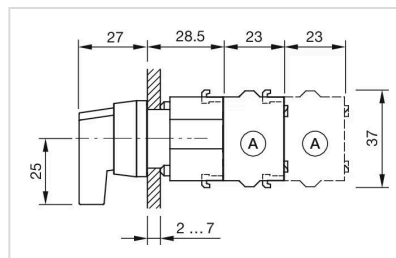


**Mounting cut-outs:**



A = Screw terminal  
B = Push-in terminal (PIT)  
C = Plug-in terminal 6.3 mm x 0.8 mm  
D = Double plug-in terminal 6.3 mm x 0.8 mm

**Dimension drawings:**



A = Screw terminal

**Switching positions:**

