

# Actuator

704.102.0



<https://eao.com/p/704.102.0>

Your product:

---



## 704.102.0 Actuator

### FRONT

Front dimension:	Ø 29 mm
Front bezel colour:	Grey
Front bezel material:	Plastic

### MOUNTING

Design:	raised
---------	--------

### OPERATING-/INDICATION PART

Lever colour:	Black
Lever shape:	long
Lever material:	plastic

### ELECTRICAL CHARACTERISTICS

Standards:	The switches comply with the "Standards for low-voltage switching devices" DIN EN 60947-1
------------	---

### MECHANICAL CHARACTERISTIC

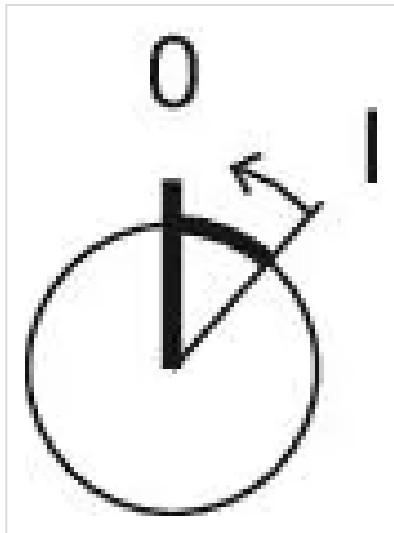
Mechanical lifetime:	≤2.5 Mio. cycles of operation
Switching positions:	2 positions
Switching action:	Rest - Momentary
Switching angle:	42° right
Weight:	0.034 kg

## AMBIENT CONDITION

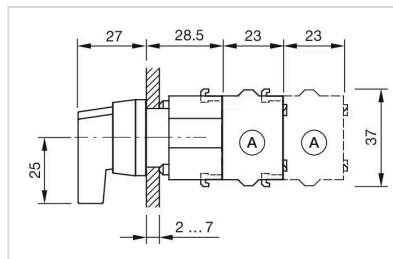
<b>IP Protection:</b>	IP65 front side
<b>Operating temperature:</b>	– 40 °C ... + 55 °C
<b>Storage temperature:</b>	– 40 °C ... + 85 °C

## OTHER

<b>Short Description:</b>	Actuator, Ø 29 mm, non illuminative, Black, long, Grey, Plastic, Rest - Momentary
<b>max. number of switching elements:</b>	3
<b>Hints:</b>	Max. 3 switching elements can be clipped on
<b>Switching positions:</b>	

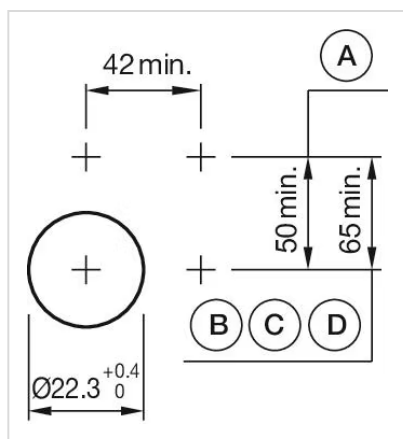


## Dimension drawings:



A = Screw terminal

## Mounting cut-outs:



A = Screw terminal  
 B = Push-in terminal (PIT)  
 C = Plug-in terminal 6.3 mm x 0.8 mm  
 D = Double plug-in terminal 6.3 mm x 0.8 mm

**Wiring diagrams:**

