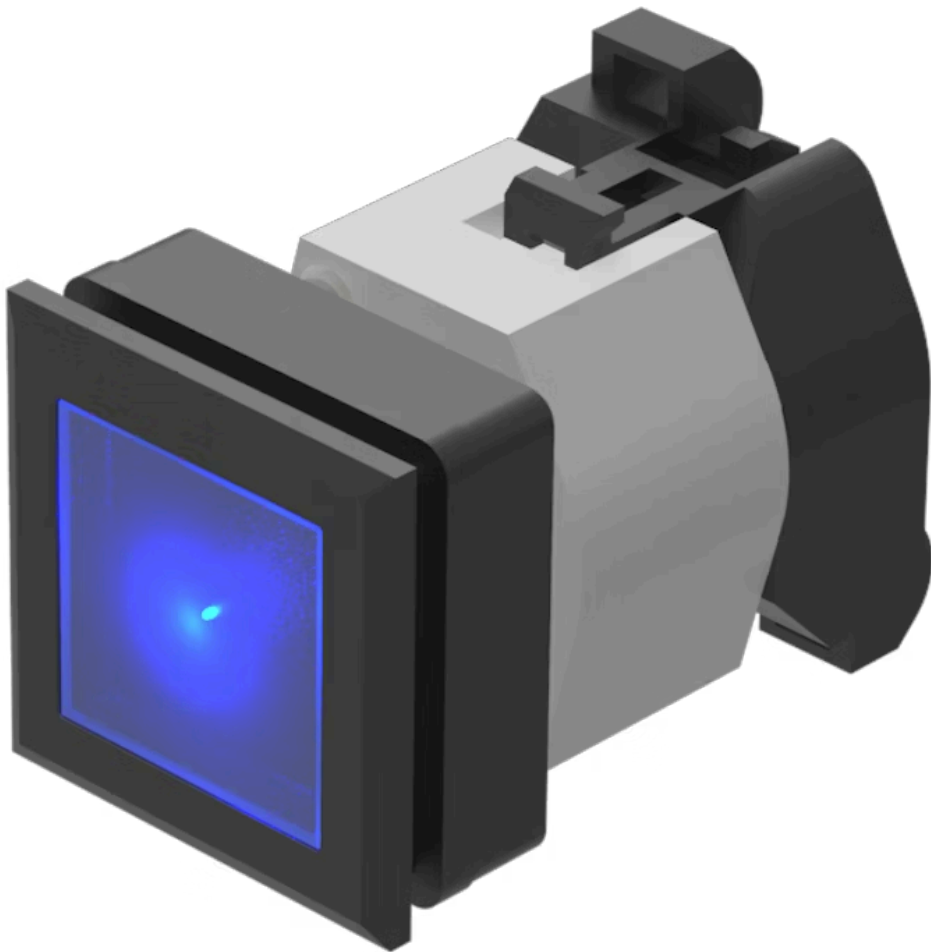


Actuator

704.229.600



<https://eao.com/p/704.229.600>

Your product:



704.229.600 Actuator

FRONT

Front bezel material:	Plastic
Front bezel colour:	Black
Front form:	square
Front dimension:	35 mm x 35 mm

MOUNTING

Design:	flush
Mounting cut-out:	30 mm x 30 mm

OPERATING-/INDICATION PART

Lens material:	Plastic
Lens optics:	transparent
Lens colour:	Blue
Lens illumination:	illuminative
Lens shape:	flush

ELECTRICAL CHARACTERISTICS

Standards:	The switches comply with the "Standards for low-voltage switching devices" DIN EN 60947-1
------------	---

MECHANICAL CHARACTERISTIC

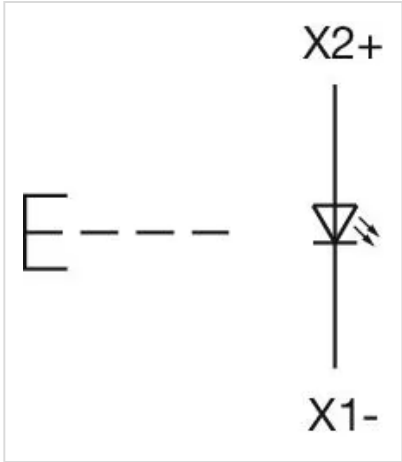
Weight:	0.051 kg
Operating force:	6.2 N

Operating Travel:	ca. 5.8 mm ± 0.2 mm
Mechanical lifetime:	≤3 Mio. cycles of operation
Terminal:	Screw terminal
Switching action:	Momentary

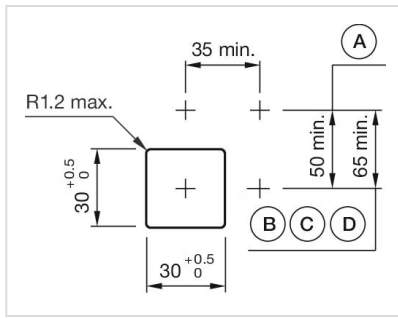
AMBIENT CONDITION

Storage temperature:	– 40 °C ... + 85 °C
Operating temperature:	– 40 °C ... + 55 °C
IP Protection:	IP65 front side

OTHER

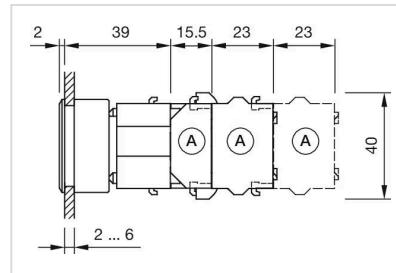
max. number of switching elements:	3
Housing material:	Plastic
Housing colour:	Black
Hints:	Max. 3 switching elements can be clipped on, The lamp block will be delivered with screw terminal
Short Description:	Actuator, 30 mm x 30 mm, 35 mm x 35 mm, flush, illuminative, Blue, Plastic, transparent, square, Black, Plastic, Momentary, Screw terminal
Wiring diagrams:	

Mounting cut-outs:



A = Screw terminal
 B = Push-in terminal (PIT)
 C = Plug-in terminal 6.3 mm x 0.8 mm
 D = Double plug-in terminal 6.3 mm x 0.8 mm

Dimension drawings:



A = Screw terminal