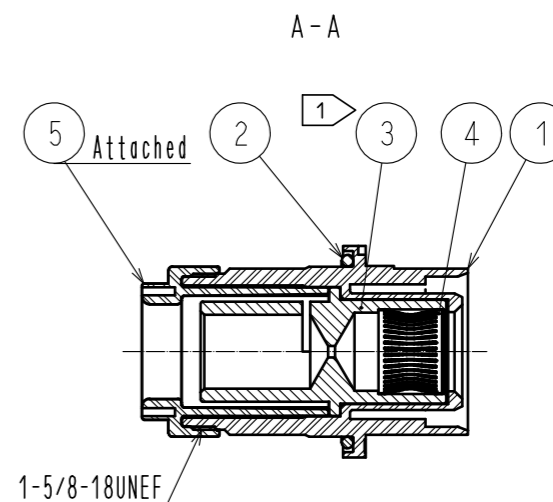
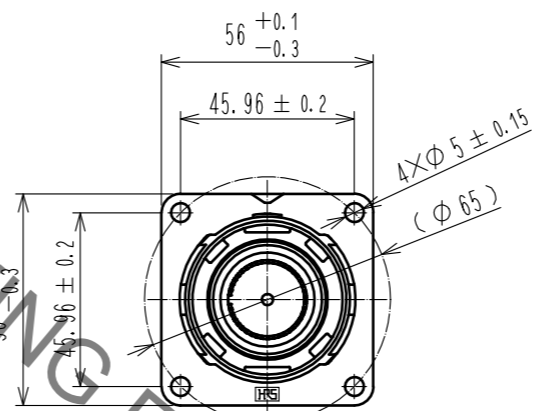
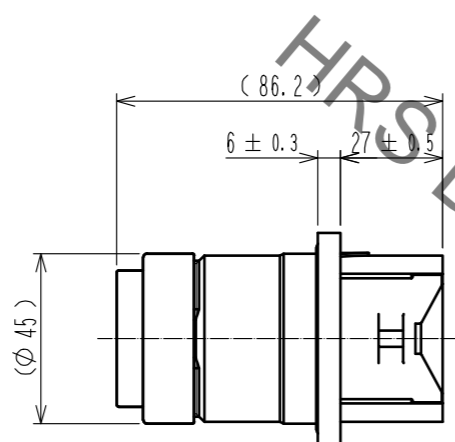
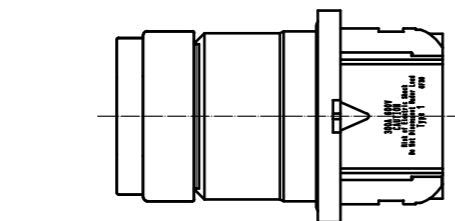
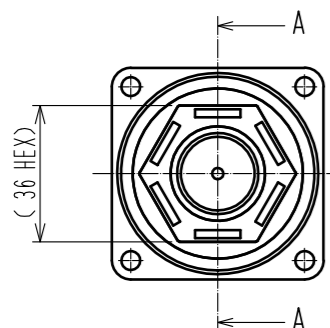
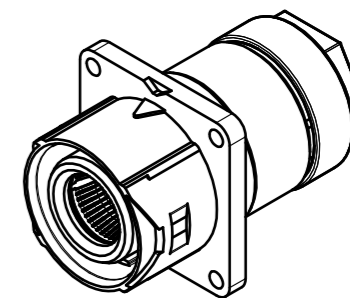
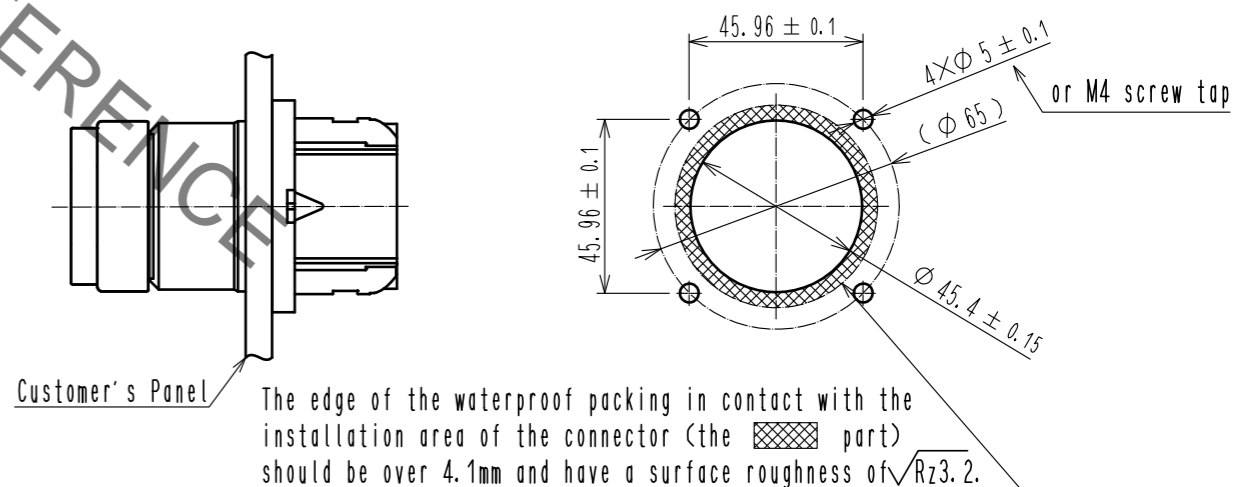


Jan.1.2022 Copyright 2022 HIROSE ELECTRIC CO., LTD. All Rights Reserved.
In case of consideration for using Automotive equipment / device which demand high reliability, kindly contact our sales window correspondents.

Isometric Diagram



Recommended Panel Installation State Diagram - Dimensions.



- Notes
- ① The contact will be sent with Ref.No. ④ inserted into Ref. No. ③.
 - ② Rotation examples of ref no. ① and ⑤ are shown.
 - ③ Recommended Crimping Tool: JIS-C-9711 IZUMI CO., LTD REC-150F.
 - ⚠ ④ The recommended tightening torque of Ref.No. ⑤ to be 6N·m.
Furthermore, to prevent loosening, it is recommended that thread-locking fluid be used.
 - ⑤ When installing this product, make sure that Ref. No. ② is fitted into the groove of Ref. No. ①.
Be careful that Ref. No. ② does not get stuck.
 - ⚠ ⑥ This product is UL certified. (File E481344)

WARNING . This product is not hot pluggable.

3	Copper	Silver plating	3 μm					
2	Nitrile butadiene rubber	(Black)		5	PBT	(Black)	UL94V-0	
1	PBT	(Black)	UL94V-0	4	Copper alloy	Silver plating	3 μm	
NO.	MATERIAL	FINISH	REMARKS	NO.	MATERIAL	FINISH	REMARKS	
UNITS		SCALE	COUNT	DESCRIPTION OF REVISIONS		DESIGNED	CHECKED	DATE
mm		1 : 2	1	DIS-C-00001117		TY. TAKAHASHI	EJ. KUNII	16. 08. 08
HRS HIROSE ELECTRIC CO., LTD.		APPROVED	: EJ. KUNII	16. 02. 25	DRAWING NO.		EDC-119505-00-00	
		CHECKED	: EJ. KUNII	16. 02. 25	PART NO.		EM40M-WBR-1SCA-K	
		DESIGNED	: TY. TAKAHASHI	16. 02. 25	CODE NO.		CL138-0071-0-00	
		DRAWN	: TY. TAKAHASHI	16. 02. 25			1/1	