

Actuator

704.060.5



<https://eao.com/p/704.060.5>

Your product:



704.060.5 Actuator

FRONT

Front form:	round
Front bezel material:	Plastic
Front dimension:	Ø 29 mm
Front bezel colour:	Grey

MOUNTING

Design:	raised
---------	--------

OPERATING-/INDICATION PART

Lens optics:	transparent
Lens colour:	Green
Lens material:	Plastic
Lens illumination:	illuminative
Lens shape:	flush

ELECTRICAL CHARACTERISTICS

Standards:	The switches comply with the "Standards for low-voltage switching devices" DIN EN 60947-1
------------	---

MECHANICAL CHARACTERISTIC

Terminal:	Screw terminal
Operating force:	8 N
Operating Travel:	ca. 5.8 mm ± 0.2 mm

Switching action: Maintained

Weight: 0.056 kg

Mechanical lifetime: ≤3 Mio. cycles of operation

AMBIENT CONDITION

Storage temperature: – 40 °C ... + 85 °C

Operating temperature: – 40 °C ... + 55 °C

IP Protection: IP65 front side

OTHER

Housing colour: Grey

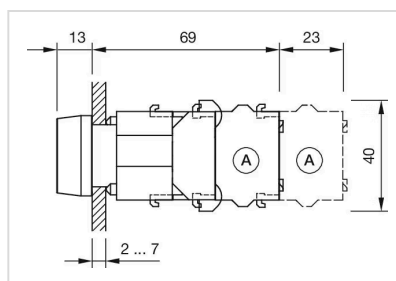
max. number of switching elements: 3

Housing material: Plastic

Short Description: Actuator, Ø 29 mm, flush, illuminative, Green, Plastic, transparent, round, Grey, Plastic, Maintained, Screw terminal

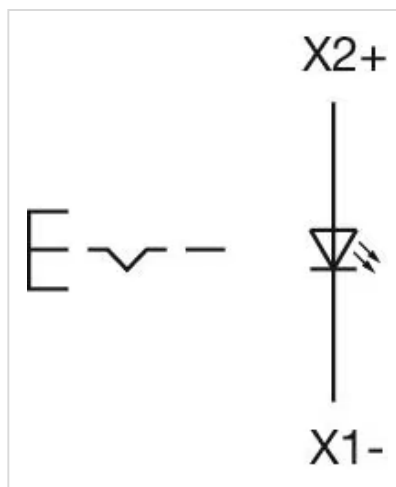
Hints: Frontring with protective cover to be mounted with a torque of 0.4 Nm onto actuator, Max. 3 switching elements can be clipped on

Dimension drawings:

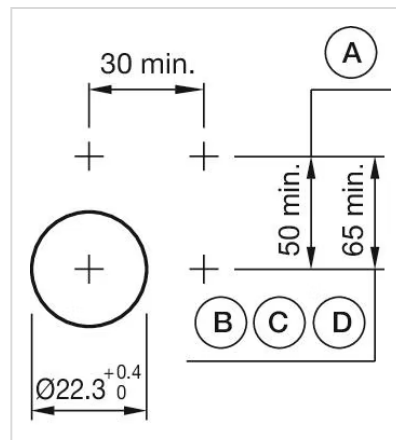


A = Screw terminal

Wiring diagrams:



Mounting cut-outs:



A = Screw terminal

B = Push-in terminal (PIT)

C = Plug-in terminal 6.3 mm x 0.8 mm

D = Double plug-in terminal 6.3 mm x 0.8 mm