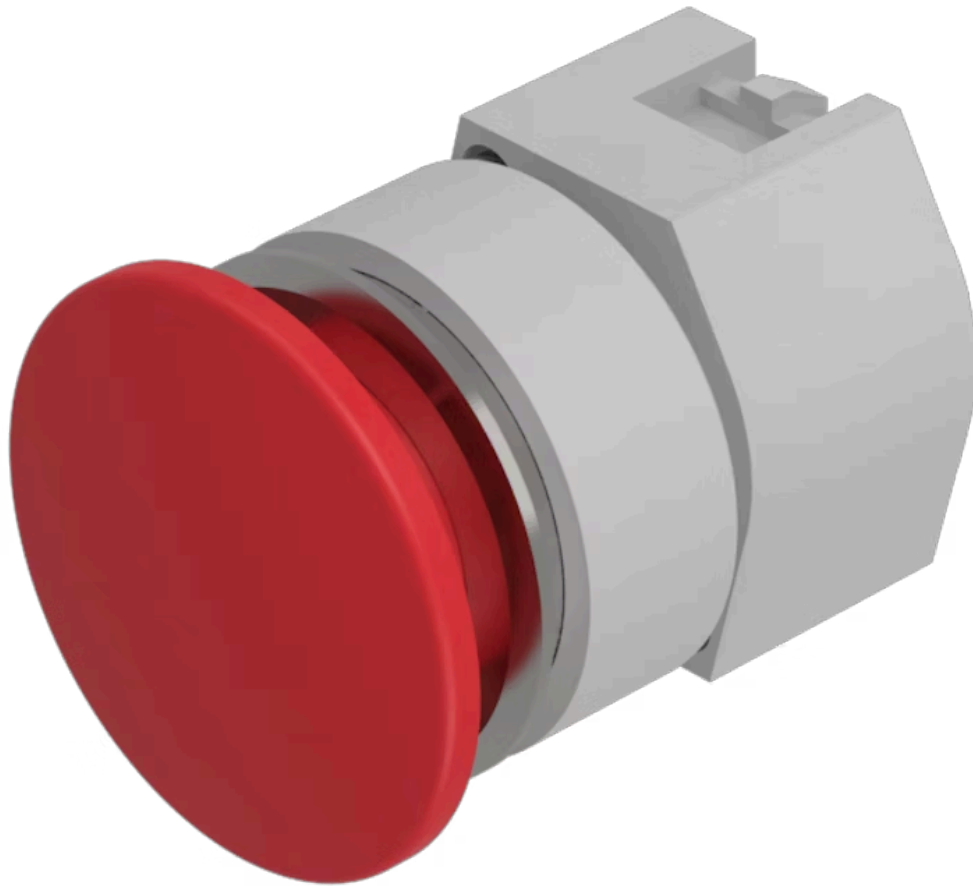


Actuator

704.075.318



<https://eao.com/p/704.075.318>

Your product:



704.075.318 Actuator

FRONT

Front dimension:	Ø 40 mm
Front bezel material:	Aluminium
Front bezel colour:	Nature

MOUNTING

Design:	flush
---------	-------

OPERATING-/INDICATION PART

Lens colour:	Red
Lens material:	Plastic
Lens illumination:	non illuminative
Lens optics:	opaque
Lens shape:	mushroom-head

ELECTRICAL CHARACTERISTICS

Standards:	The switches comply with the "Standards for low-voltage switching devices" DIN EN 60947-1
------------	---

MECHANICAL CHARACTERISTIC

Weight:	0.048 kg
Operating Travel:	ca. 5.8 mm ± 0.2 mm
Switching action:	Maintained
Operating force:	8 N

Mechanical lifetime: ≤50 000 cycles of operation

AMBIENT CONDITION

Storage temperature: – 40 °C ... + 85 °C

IP Protection: IP65 front side

Operating temperature: – 40 °C ... + 55 °C

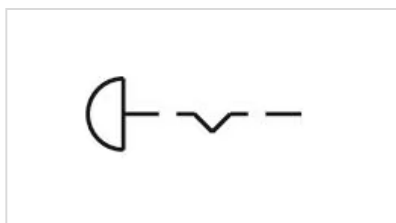
OTHER

max. number of switching elements: 3

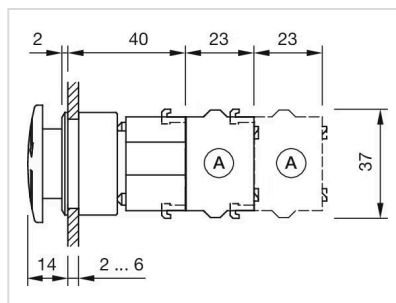
Marking: Stop

Short Description: Actuator, Ø 40 mm, mushroom-head, non illuminative, Red, Plastic, opaque, Nature, Aluminium, anodised, Maintained

Wiring diagrams:

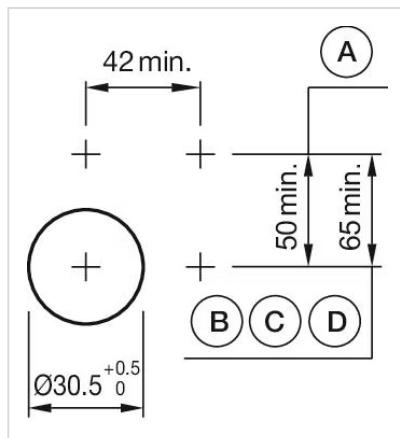


Dimension drawings:



A = Screw terminal

Mounting cut-outs:



- A = Screw terminal
- B = Push-in terminal (PIT)
- C = Plug-in terminal 6.3 mm x 0.8 mm
- D = Double plug-in terminal 6.3 mm x 0.8 mm