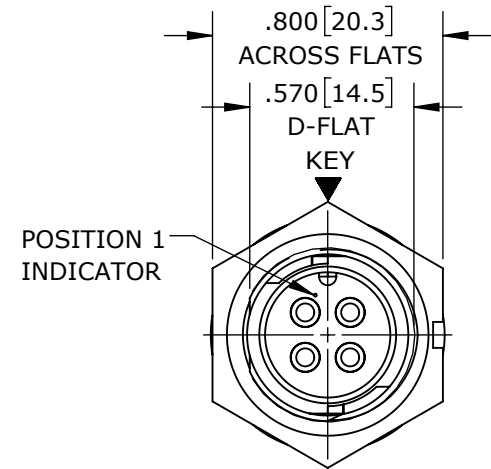
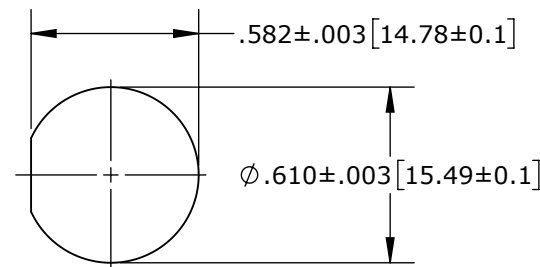
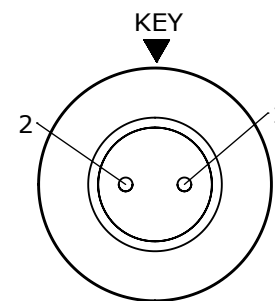


## NOTES:

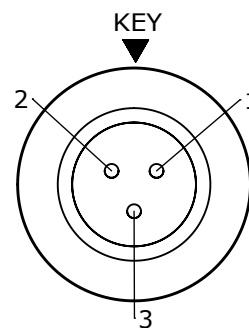
1. CRIMP CONTACTS SUPPLIED UNASSEMBLED AND WITHOUT EPOXY BACKING.
2. REFER TO DRAWING HPMISTD FOR CONTACT PATTERNS.
3. HEX-NUT TORQUE: 8-10 IN-LB.
4. DIMENSIONS ARE REFERENCE ONLY, IN INCHES [mm], WITHIN  $\pm 0.015$  UNLESS OTHERWISE NOTED.



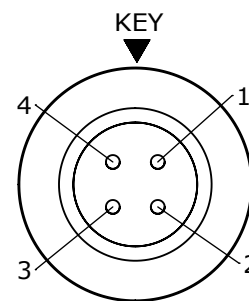
**MATING FACE**  
W7382-4PG-P-300 SHOWN

**RECOMMENDED PANEL CUTOUT**

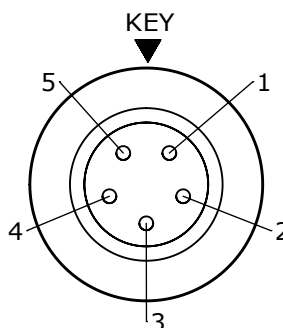
W7381-2PG-P-3ES



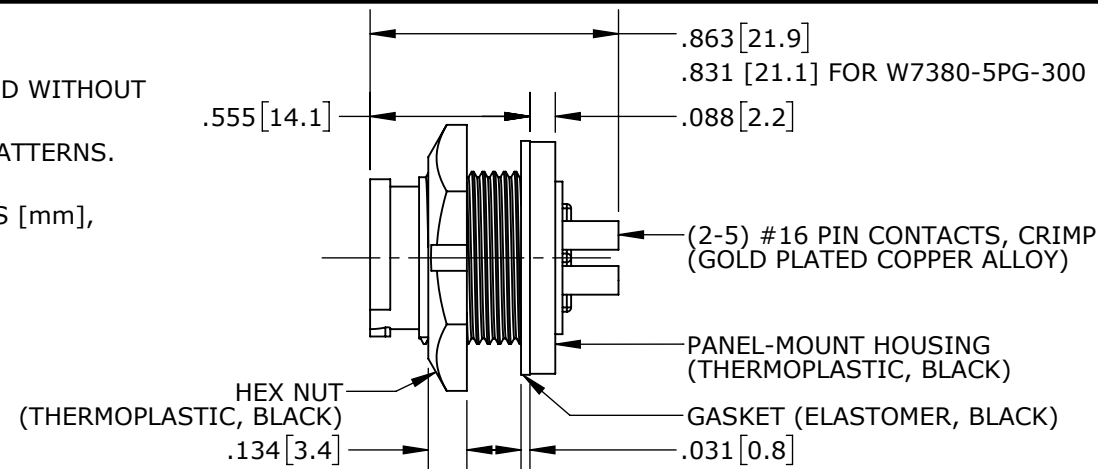
W7381-3PG-P-3ES



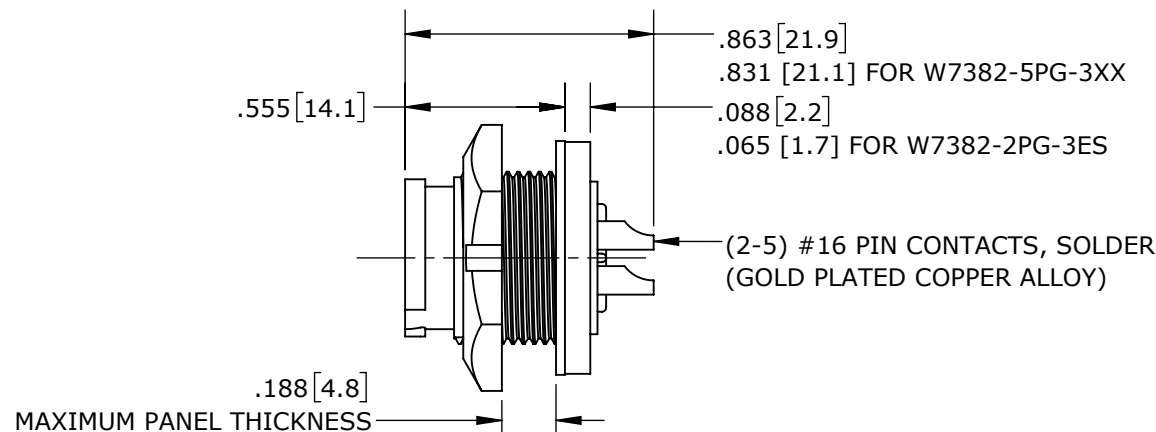
W7381-4PG-P-3ES



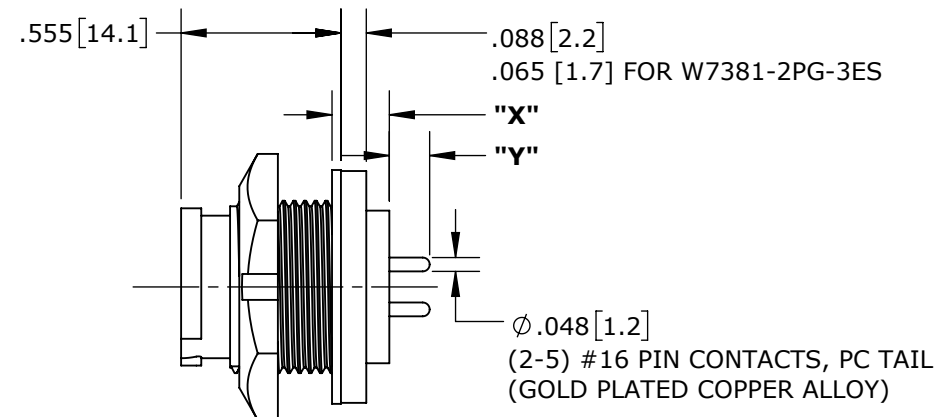
W7381-5PG-P-3ES

**CONTACT ARRANGEMENTS (WIRING END SHOWN)**

**CRIMP CONTACTS** (SHOWN ASSEMBLED)  
W7380-4PG-P-300 SHOWN



**SOLDER CONTACTS**  
W7382-4PG-P-300 SHOWN



**PC TAIL CONTACTS**  
W7381-4PG-P-3ES SHOWN

**PANEL-MOUNT CONNECTOR PART NUMBERS:****W 7 3 8 X - X P G - P - 3XX**

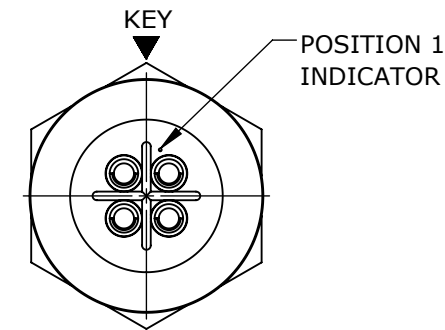
CONTACTS STYLE:

0 = CRIMP  
2 = SOLDER  
1 = PC TAIL

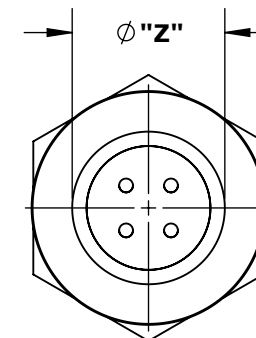
# OF CONTACTS:

2-5 #16 PINS

EPOXY BACKING:  
3ES = WITH EPOXY  
300 = WITHOUT EPOXY



**WIRING END**  
W7382-4PG-P-300 SHOWN



**WIRING END**  
W7381-4PG-P-3ES SHOWN

**PC CONTACT CONNECTORS DIMENSIONING:**

| PART NUMBER     | "X"        | "Y"         | "Z"         |
|-----------------|------------|-------------|-------------|
| W7381-2PG-P-300 | .174 [4.4] | .165 [4.2]  | .530 [13.5] |
| W7381-3PG-P-300 |            |             |             |
| W7381-4PG-P-300 |            |             |             |
| W7381-5PG-P-300 | .124 [3.1] | .183 [4.6]  | .464 [11.8] |
| W7381-2PG-P-3ES | .191 [4.9] | .148 [3.8]  |             |
| W7381-3PG-P-3ES | .199 [5.1] | .140 [3.6]  |             |
| W7381-4PG-P-3ES |            | .530 [13.5] |             |
| W7381-5PG-P-3ES | .159 [4.0] | .148 [3.8]  |             |

**CUSTOMER APPROVAL**

THIS DOCUMENT CONTAINS CONFIDENTIAL INFORMATION PROPRIETARY TO CONXALL CORPORATION. ANY REPRODUCTION, DISCLOSURE, OR USE OF THIS DOCUMENT /INFORMATION IS EXPRESSLY PROHIBITED UNLESS AUTHORIZED IN WRITING BY CONXALL CORPORATION.

APPROVED BY: \_\_\_\_\_

DATE: \_\_\_\_\_

**RoHS COMPLIANT**

|  |       |          |  |                              |
|--|-------|----------|--|------------------------------|
| 0A   | PNK   | 01-12-18 | PDR16014   |                              |
| REV.   | INIT. | DATE     | DESCRIPTION  |                              |
|  | PNK   | 01-12-18 | ORIG. DRAWN BY: DATE: 01-12-18   |                              |
| ALL INFORMATION ILLUSTRATED IS THE PROPERTY OF CONXALL CORPORATION. UNAUTHORIZED DUPLICATION OR DISTRIBUTION OF THIS DOCUMENT IS PROHIBITED. |       |          | CHECKED BY:  |                              |
| ALL UNITS ARE IN FEET, INCHES, FRACTION OF INCHES AND DECIMALS.  |       |          | APPROVED BY:   |                              |
| = CRITICAL CHARACTERISTIC FLAG PER SPEC. XXXX  |       |          | SCALE NTS  | SIZE B                       |
|  |       |          | FILE: W738X-XPG-P-3XX_CD   | SHEET 1 OF 1                 |
|  |       |          | DIRECTORY: SLW   | PART NUMBER: W738X-XPG-P-3XX |
|  |       |          | TITLE: PANEL-MOUNT CONNECTOR 2-5 #16 PIN CONTACTS INSTA-CLICK™ MINI-CON-X STANDARD PRODUCT |                              |
|  |       |          | REV 0A   |                              |