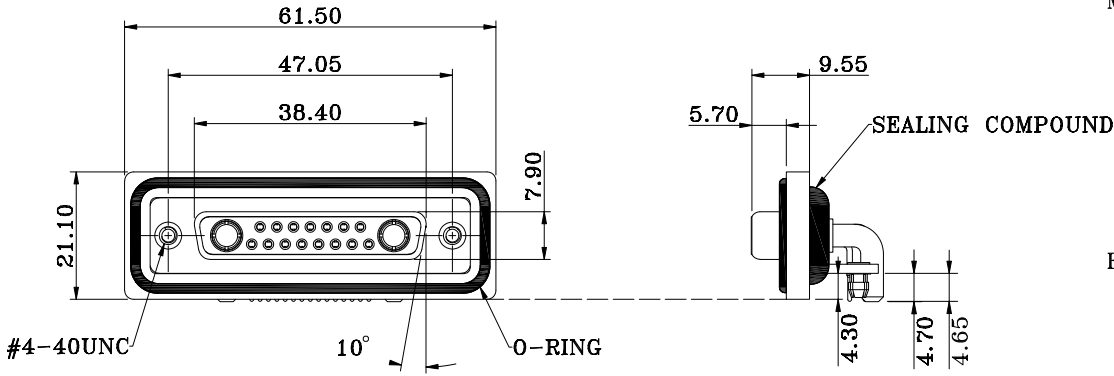
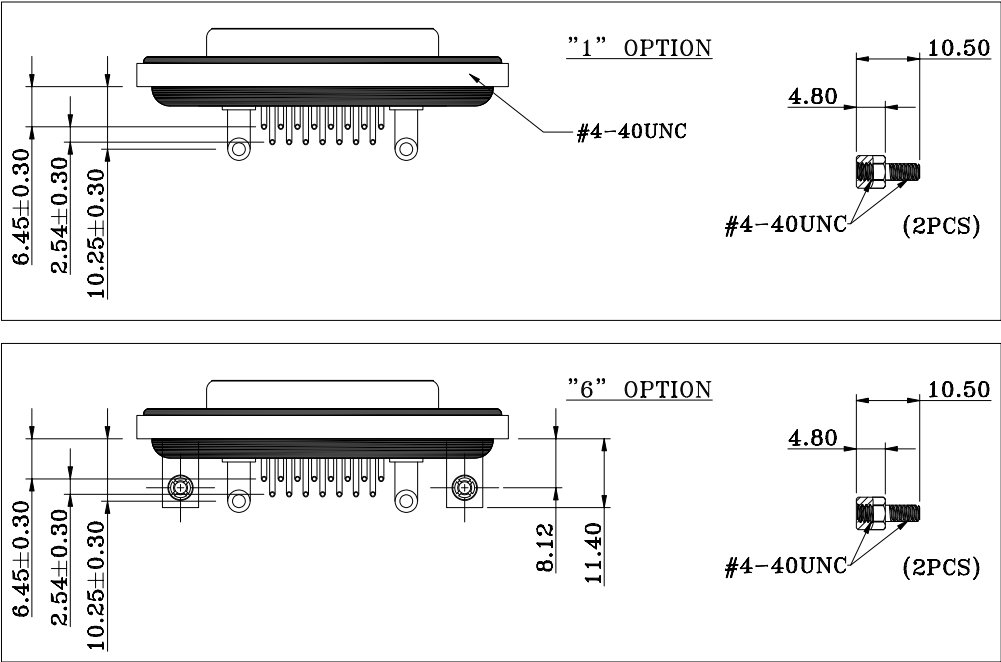


DESCRIPTION: DSUB IP67 FLANGE // FEMALE // COMBO // RIGHT ANGLE PIN PCB MOUNT



CONTACT ϕ AT TERMINATION SIDE
SIGNAL CONTACTS = $\phi 0.65$
20 AMP = $\phi 2.80$
40 AMP = $\phi 3.75$

HARDWARE OPTIONS



NOTE:

MATERIAL	
HOUSING	PBT UL94V-0, BLACK
FLANGE	PBT UL94V-0, BLACK
CONTACT	BRASS, PLATING P/N KEY BELOW
SHELL	STEEL, NICKEL
O-RING	SILICONE
SEALING COMPOUND	EPOXY
HARDWARE	BRASS; NICKEL PLATED
ELECTRICAL	
SIGNAL CONTACT RATED CURRENT	5A
POWER CONTACT RATED CURRENT	P/N KEY BELOW
VOLTAGE	1000 VAC 1 MIN
INSULATOR RESISTANCE	5 GOhms MIN.
SIGNAL CONTACT RESISTANCE	10 mOhms MAX.
POWER CONTACT RESISTANCE	2.0 mOhms MAX.
WATER PROOF	IP67
ENVIRONMENT	
OPERATION TEMPERATURE	-25°C TO +85°C

SERIES _____
CDF = COMBO DSUB FLANGE
CONTACT TYPE _____
R = RIGHT ANGLE PCB MOUNT
POSITION _____
17W2
GENDER _____
2 = FEMALE
POWER CONTACT AMPERAGE _____
2 = 20 AMPS
4 = 40 AMPS
HARDWARE OPTIONS _____
1 = 4-40 THREADED INSERTS/4-40 JACKSCREWS
6 = 4-40 THREADED BRACKETS &
BOARD LOCKS/4-40 JACKSCREWS
CONTACT PLATING OPTIONS _____
1 = GOLD FLASH
2 = 30u" GOLD PLATING

CDFR17W2213LYYY

RoHS COMPLIANT



THESE DRAWINGS AND SPECIFICATIONS ARE THE PROPERTY OF NorComp AND SHALL NOT BE REPRODUCED, COPIED OR USED AS THE BASIS FOR THE MANUFACTURE OR SALE OF APPARATUS WITHOUT WRITTEN PERMISSION.

DRAWN:
J. KADEL
DATE:
04/28/2020

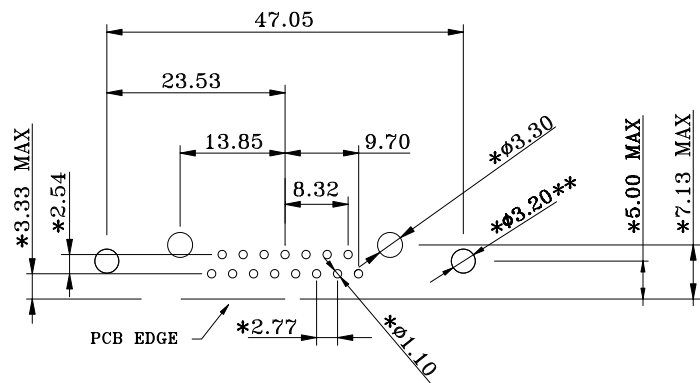
TOLERANCES
X. ± 0.40
.X ± 0.30
.XX ± 0.20
.XXX ± 0.10

UNITS = mm DO NOT SCALE FROM DRAWING

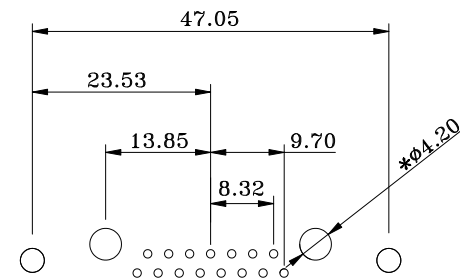
NorComp	SCALE: NTS	SHEET 1 OF 2	REV 1
	DWG NO.	CDFR17W2213LYYY	

****ø3.20MM HOLES NOT NEEDED FOR "1" HARDWARE OPTION**

20 AMP CONFIGURATION



40 AMP CONFIGURATION



RECOMMENDED PCB LAYOUT

*TYPICAL // HOLE SIZE MAY NOT BE SUITABLE FOR YOUR
SPECIFIC APPLICATION

RoHS COMPLIANT



THESE DRAWINGS AND SPECIFICATIONS ARE THE PROPERTY OF NorComp AND SHALL NOT BE REPRODUCED, COPIED OR USED AS THE BASIS FOR THE MANUFACTURE OR SALE OF APPARATUS WITHOUT WRITTEN PERMISSION.

DRAWN:

J. KADEL

DATE:

04/28/2020

TOLERANCES

X.	± 0.40
.X	± 0.30
.XX	± 0.20
.XXX	± 0.10

UNITS = mm

DO NOT SCALE FROM DRAWING

NorComp

SCALE:

NTS

DWG NO.

SHEET

OF 2

REV
1

CDFR17W2213LYYY