

Actuator

61-1240.0



<https://eao.com/p/61-1240.0>

Your product:



61-1240.0 Actuator

FRONT

Front bezel colour: Black

Front bezel material: Plastic

OPERATING-/INDICATION PART

Lens illumination: illuminative

MECHANICAL CHARACTERISTIC

Operating Travel: 3 mm

Weight: 0.005 kg

Switching action: Maintained

Mechanical lifetime: According to DIN/IEC 60512-5-6 and EN/IEC 60947-5-1, 1 Mio. cycles of operation

Operating force: 3 N ... 5 N snap-action switching element, 3.5 ... 11 N slow-make switching element

Tightening torque: Max. 0.5 Nm

AMBIENT CONDITION

IP Protection: IP40 rear side, according to EN IEC 60529, IP67 front side, according to EN IEC 60529

Storage temperature: – 40 °C ... + 85 °C

OTHER

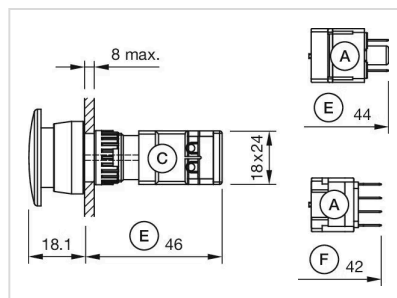
Housing colour: Black

Housing material: Plastic, according to UL 94 V0, self-extinguishing

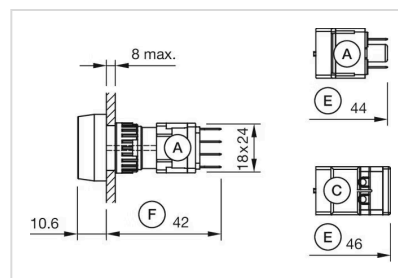
Short Description:

Actuator, illuminative, Black, Plastic, Maintained

Dimension drawings:

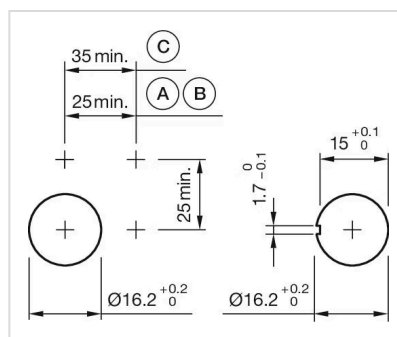


A = Plug-in terminal 2.8 mm x 0.5 mm
C = Screw terminal
E = Slow-make switching element
F = Snap-action switching element

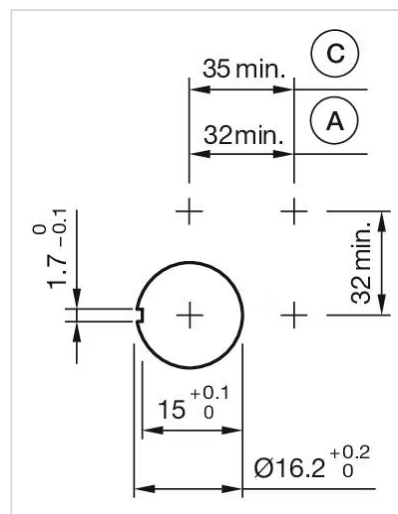


A = Plug-in terminal 2.8 mm x 0.5 mm
C = Screw terminal
E = Slow-make switching element
F = Snap-action switching element

Mounting cut-outs:



A = Solder/Plug-in terminal 2.8 mm x 0.5 mm
B = Solder terminal
C = Screw terminal



A = Solder/Plug-in terminal 2.8 mm x 0.5 mm
C = Screw terminal

Wiring diagrams:

