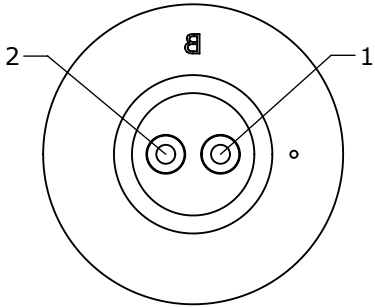
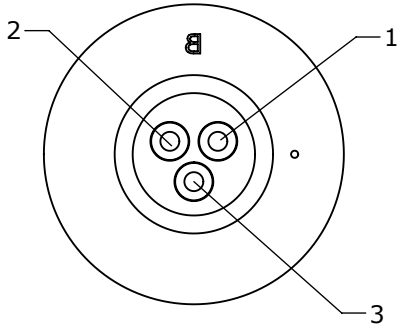


PART NO.	NO. OF PINS
17281-2SG-300	2
17281-3SG-300	3

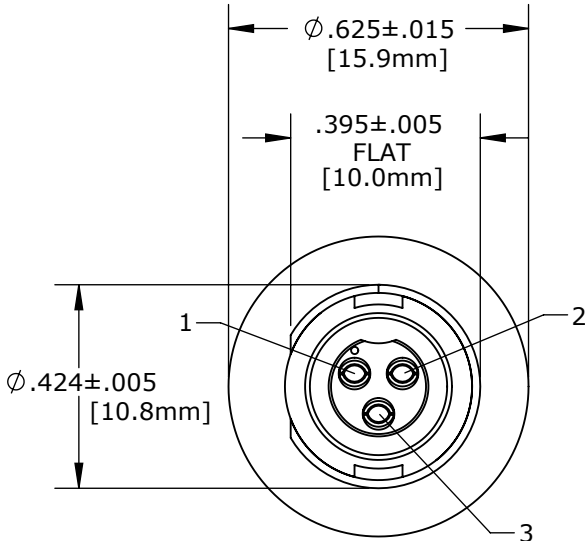
- NOTES:
- ALL PARTS ARE TO BE BULK PACKED.
 - CONTACTS ARE INSERTED INTO PANEL CONNECTOR
 - SEE DRAWING HPMCSTD FOR HOLE PATTERN



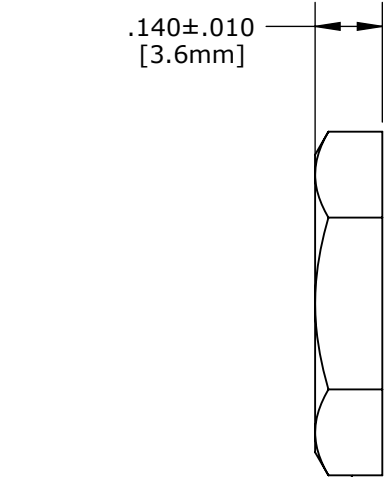
WIRE VIEW
17281-2SG-300



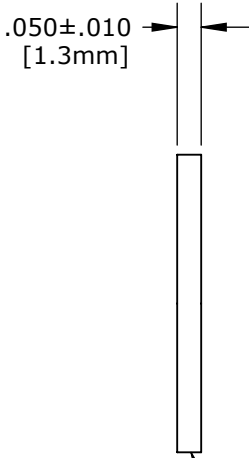
WIRE VIEW
17281-3SG-300



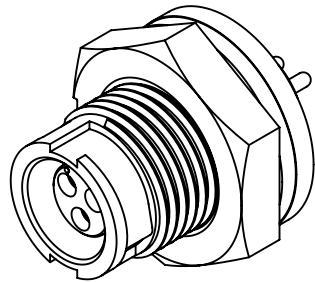
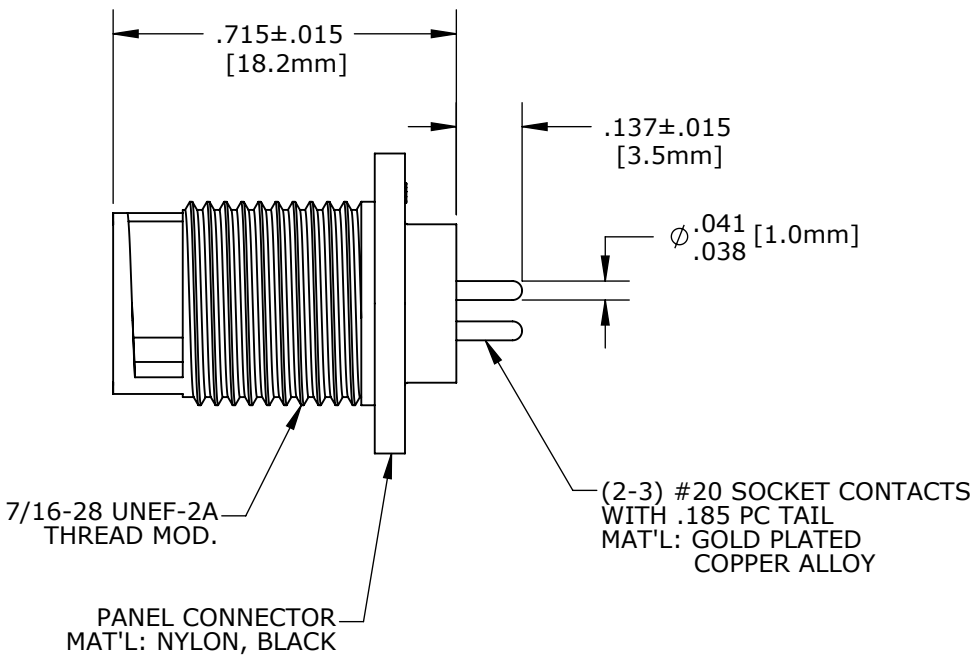
FACE VIEW
17281-3SG-300 SHOWN



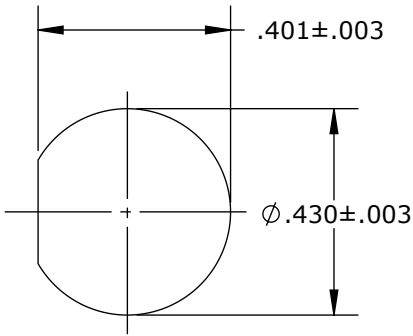
HEX NUT
MAT'L: NYLON, BLACK
5/8 IN. ACROSS FLATS



GASKET
MAT'L: RUBBER, BLACK




SHOWN ASSEMBLED KIT
FOR CUSTOMER REFERENCE ONLY
17281-3SG-300 SHOWN



RECOMMENDED
PANEL CUT-OUT

CUSTOMER APPROVAL	
THIS DOCUMENT CONTAINS CONFIDENTIAL INFORMATION PROPRIETARY TO CONXALL CORPORATION. ANY REPRODUCTION, DISCLOSURE, OR USE OF THIS DOCUMENT /INFORMATION IS EXPRESSLY PROHIBITED UNLESS AUTHORIZED IN WRITING BY CONXALL CORPORATION.	
APPROVED BY:	_____
DATE:	_____

RoHS COMPLIANT

A		AN		02-09-11		CREATED FAMILY DRAWING PER DOR 11-E149SL SUPERSEDED DWG. 17281-2SG-300 & 17281-3SG-300							
REV.		INIT.		DATE		DESCRIPTION							
ALL INFORMATION ILLUSTRATED IS THE PROPERTY OF "CONXALL CORPORATION." UNAUTHORIZED DUPLICATION OR DISTRIBUTION OF THIS DOCUMENT IS PROHIBITED.						ORIG. DRAWN BY:		DATE:		 601 E. WILDWOOD VILLA PARK, IL 60181			
						AN		02-09-11					
ALL UNITS ARE IN FEET, INCHES, FRACTION OF INCHES AND DECIMALS.						CHECKED BY:		APPROVED BY:				TITLE: PANEL MOUNT ASSEMBLY (2-3) #20 SOCKET CONTACTS, PC TAIL MICRO-CON-X	
▷ = CRITICAL CHARACTERISTIC FLAG PER SPEC. XXXX						SCALE		SIZE		SHEET		CUSTOMER: STANDARD PRODUCT	
						NTS		B		1 OF 1			
FILE:						17281-XSG-300		DIRECTORY:		SLW		PART NUMBER: 17281-XSG-300	
												REV A	

DIMENSIONS IN BRACKET [] ARE METRIC.