

Actuator

704.411.010.12



<https://eao.com/p/704.411.010.12>

Your product:



704.411.010.12 Actuator

FRONT

Front bezel material:	Aluminium
Front bezel colour:	Black
Front dimension:	Ø 35 mm

MOUNTING

Design:	flush
Mounting cut-out:	Ø 30.5 mm

OPERATING-/INDICATION PART

Lever material:	plastic
Lever colour:	Black
Lever shape:	short

ELECTRICAL CHARACTERISTICS

Standards:	The switches comply with the "Standards for low-voltage switching devices" DIN EN 60947-1
------------	---

MECHANICAL CHARACTERISTIC

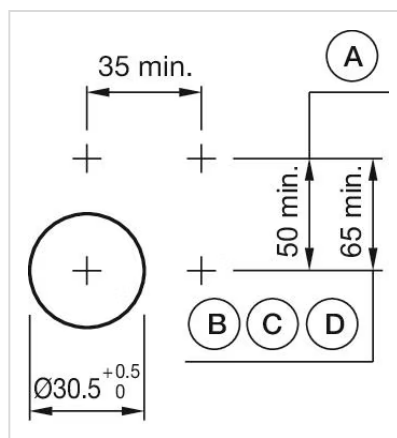
Switching positions:	2 positions
Weight:	0.056 kg
Switching action:	Rest - Maintained
Mechanical lifetime:	≤2.5 Mio. cycles of operation
Switching angle:	90° right

AMBIENT CONDITION

Operating temperature:	– 40 °C ... + 55 °C
Storage temperature:	– 40 °C ... + 85 °C
IP Protection:	IP65 front side

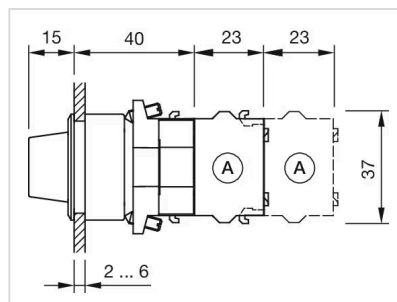
OTHER

Hints:	Max. 3 switching elements can be clipped on
max. number of switching elements:	3
Short Description:	Actuator, Ø 30.5 mm, Ø 35 mm, non illuminative, Black, short, Black, Aluminium, anodised, Rest - Maintained
Mounting cut-outs:	



A = Screw terminal
B = Push-in terminal (PIT)
C = Plug-in terminal 6.3 mm x 0.8 mm
D = Double plug-in terminal 6.3 mm x 0.8 mm

Dimension drawings:



X = Screw terminal

Switching positions:



Wiring diagrams:

