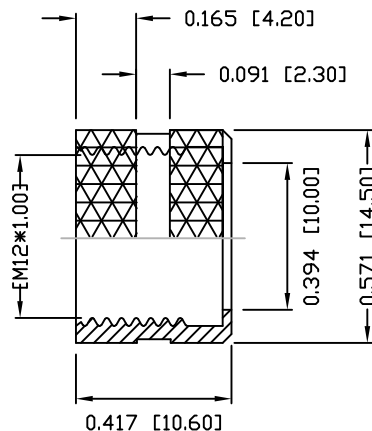
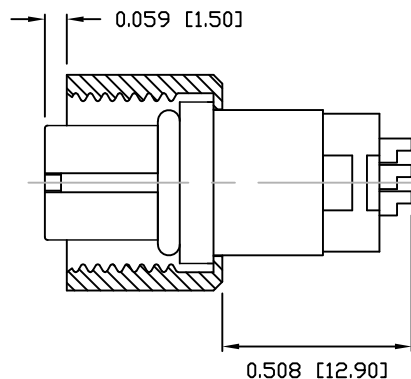
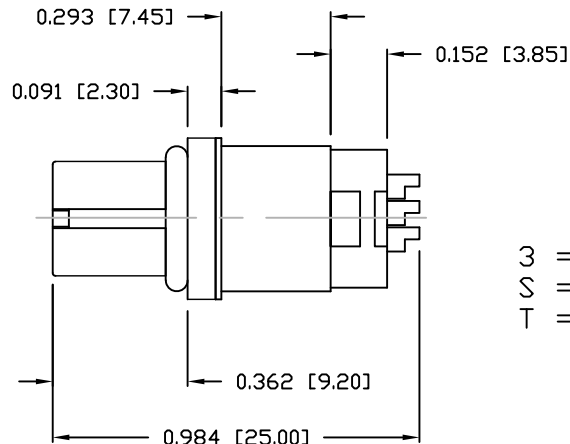
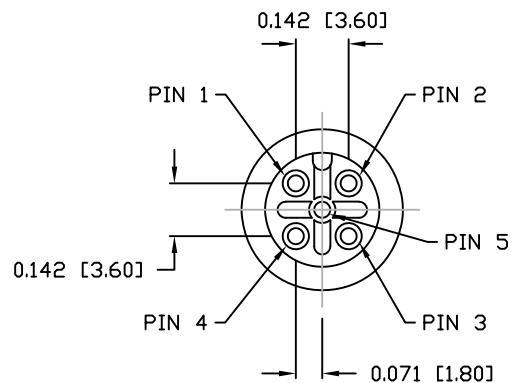


DESCRIPTION: M12 FEMALE - CABLE MOUNT - SOLDER CUP - 5 POS.



NUT



NOTE:

MATERIAL

HOUSING:

CONTACT:

NUT:

SHELL:

O-RING:

FINISH

CONTACT:

NUT:

SHELL:

ELECTRICAL

RATED CURRENT:

RATED VOLTAGE:

INSULATION RESISTANCE:

CONTACT RESISTANCE:

WATER PROOF:

ENVIRONMENT

OPERATION TEMPERATURE:

MAX WIRE AWG:

PBT UL94V-0, BLACK

BRASS

BRASS

BRASS

EPDM

GOLD PLATED

OVER 50u" NICKEL

NICKEL PLATED

NICKEL PLATED

4A

60V

100 MΩhms MIN.

10 mΩhms MAX.

IP67

-40°C TO +85°C

22

858-005-203RLSY

3 = BRASS/NICKEL (B/N) SHELL & NUT
S = STAINLESS STEEL (SS) SHELL & NUT
T = B/N SHELL / SS NUT

1 = GOLD FLASH
4 = 10u" GOLD

RoHS COMPLIANT

UNITS = INCHES [MM]

DO NOT SCALE FROM DRAWING



THESE DRAWINGS AND SPECIFICATIONS ARE THE PROPERTY OF NorComp AND SHALL NOT BE REPRODUCED, COPIED OR USED AS THE BASIS FOR THE MANUFACTURE OR SALE OF APPARATUS WITHOUT WRITTEN PERMISSION.

DRAWN:

M. SIGMON

DATE:

03-07-16

NorComp

SCALE:

NTS

SHEET

OF

1

1

REV

3

DWG NO.

858-005-203RLSY