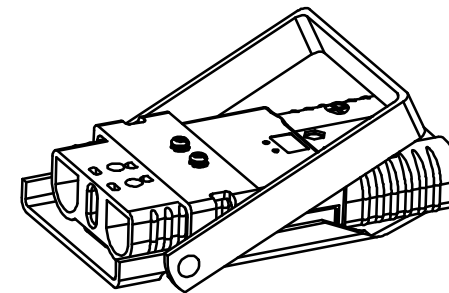
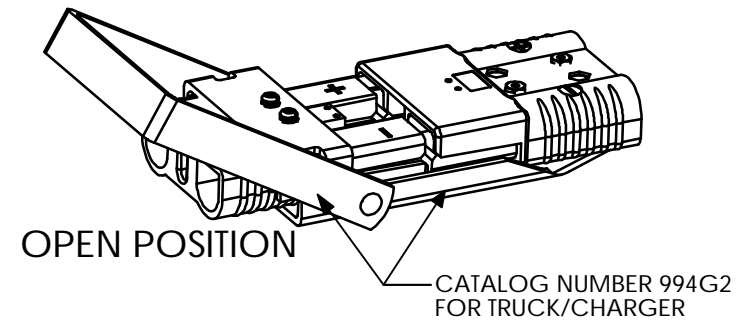
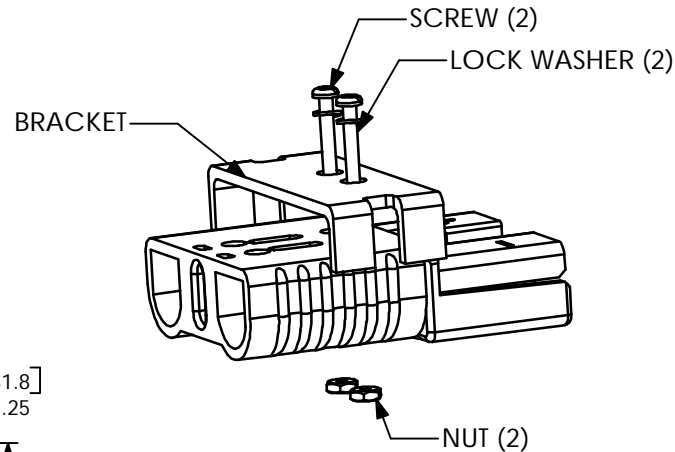


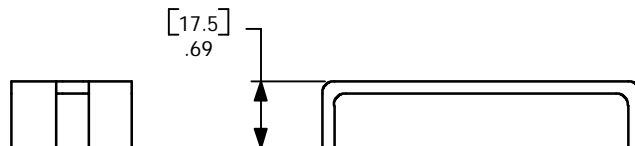
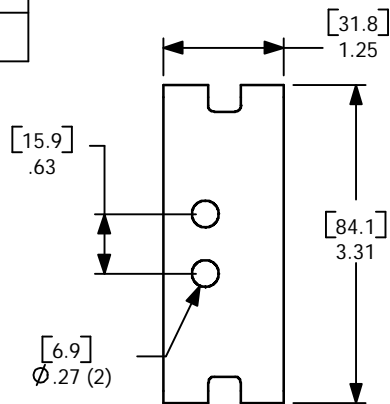
THE INFORMATION CONTAINED IN THIS DRAWING IS THE SOLE PROPERTY OF ANDERSON POWER PRODUCTS. ANY REPRODUCTION IN PART OR WHOLE WITHOUT THE WRITTEN PERMISSION OF ANDERSON POWER PRODUCTS IS PROHIBITED.

COMPONENTS FOR SBE160/SBX175  
MANUAL RELEASE  
BATTERY HALF

COMPONENT	QTY
BATTERY BRACKET	1
SCREWS	2
WASHERS	2
NUTS	2



CLOSED POSITION



- NOTES:
1. MATERIAL- COLD ROLLED STEEL, .12 THK  
FINISH- ELECTROSTATIC POWDER COAT- CRIMSON EPOXY
  2. USE WITH CATALOG NUMBER 994G2
  3. CONNECTOR SOLD SEPARATELY

NEXT ASSY	USED ON
APPLICATION	

ITEM NO.	PART OR IDENTIFYING NO.	NOMENCLATURE OR DESCRIPTION	MATERIAL SPECIFICATION	QTY REQD
COPYRIGHT 1999 ANDERSON POWER PRODUCTS. ALL RIGHTS RESERVED. UNAUTHORIZED REPRODUCTION HEREBY PROHIBITED.				
DIMENSIONS ARE IN INCHES DIMENSIONS IN PARENTHESES [ ] ARE IN MILLIMETERS  TOLERANCES ARE: 2PL- $\pm .02$ [ $\pm .5$ ]		CAD GENERATED DRAWING, DO NOT MANUALLY UPDATE		ANDERSON POWER PRODUCTS
		APPROVALS	DATE	
MATERIALS: SEE NOTES		DRAWN	CMS 4/12/00	CATALOG NUMBER 993G2 SBE160/SBX175 MANUAL RELEASE BATTERY BRACKET
		CHECKED	DJD 4/24/00	
FINISH SEE NOTES		RESP ENG	UFN 4/24/00	SIZE A SPECIFICATION: 114239S1
		MFG ENG	CHB 4/24/00	
DO NOT SCALE DRAWING		QUAL ENG	RPO 5/8/00	REV. 0
		SCALE NONE	CADFILES/01211	SHEET 1 OF 1