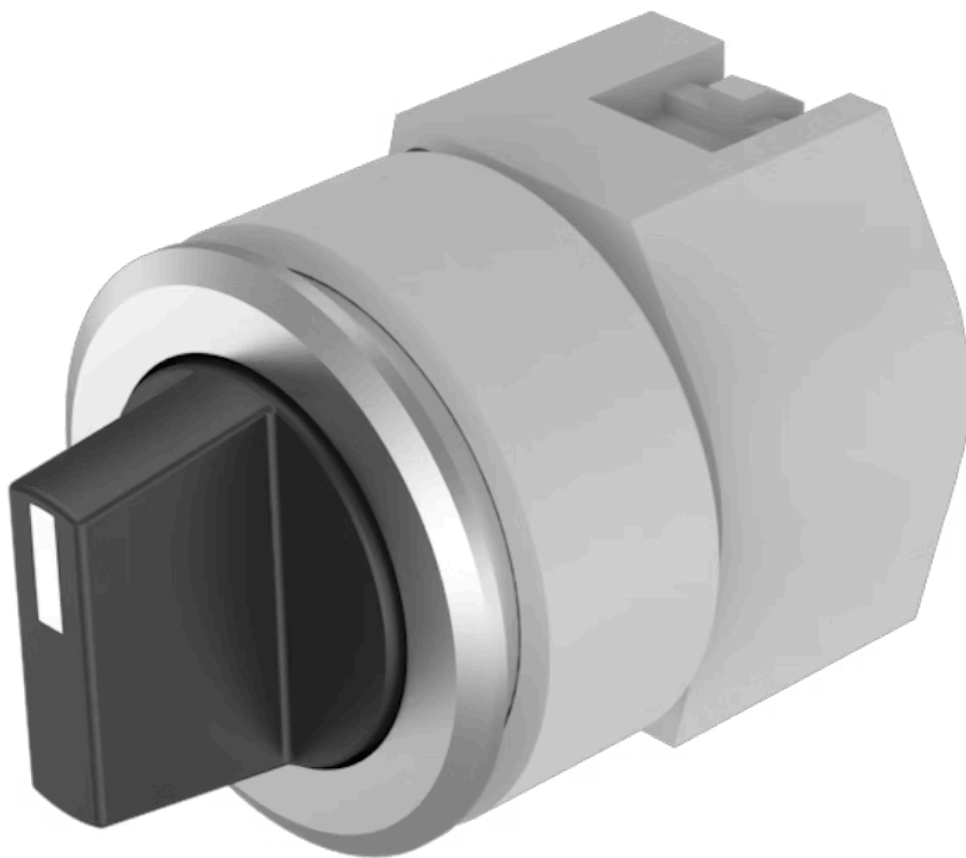


Actuator

704.411.010



<https://eao.com/p/704.411.010>

Your product:



704.411.010 Actuator

FRONT

Front bezel colour:	Black
Front dimension:	Ø 35 mm
Front bezel material:	Aluminium

MOUNTING

Mounting cut-out:	Ø 30.5 mm
Design:	flush

OPERATING-/INDICATION PART

Lever colour:	Black
Lever shape:	short
Lever material:	plastic

ELECTRICAL CHARACTERISTICS

Standards:	The switches comply with the "Standards for low-voltage switching devices" DIN EN 60947-1
------------	---

MECHANICAL CHARACTERISTIC

Switching positions:	2 positions
Weight:	0.056 kg
Mechanical lifetime:	≤2.5 Mio. cycles of operation
Switching angle:	90° right / -45° ... +45°
Switching action:	Rest - Maintained

AMBIENT CONDITION

Operating temperature:	- 40 °C ... + 55 °C
IP Protection:	IP65 front side
Storage temperature:	- 40 °C ... + 85 °C

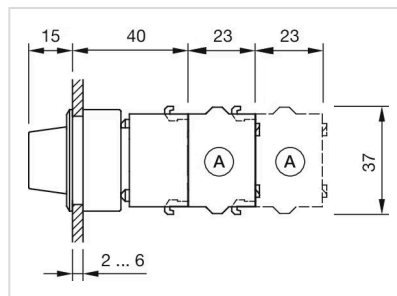
OTHER

max. number of switching elements:	3
---	---

Hints: Max. 3 switching elements can be clipped on

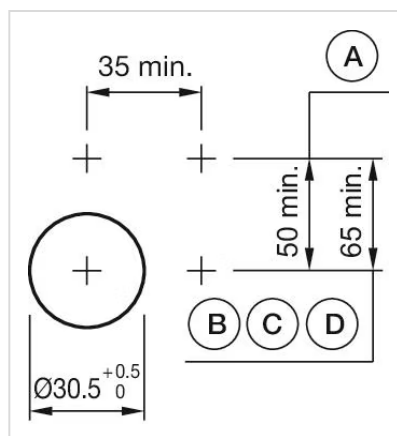
Short Description: Actuator, Ø 30.5 mm, Ø 35 mm, non illuminative, Black, short, Black, Aluminium, anodised, Rest - Maintained

Dimension drawings:



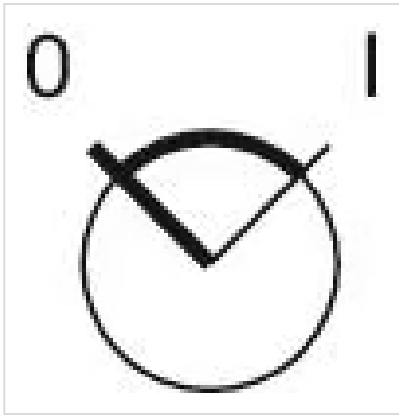
A = Screw terminal

Mounting cut-outs:



A = Screw terminal
 B = Push-in terminal (PIT)
 C = Plug-in terminal 6.3 mm x 0.8 mm
 D = Double plug-in terminal 6.3 mm x 0.8 mm

Switching positions:



Wiring diagrams:

