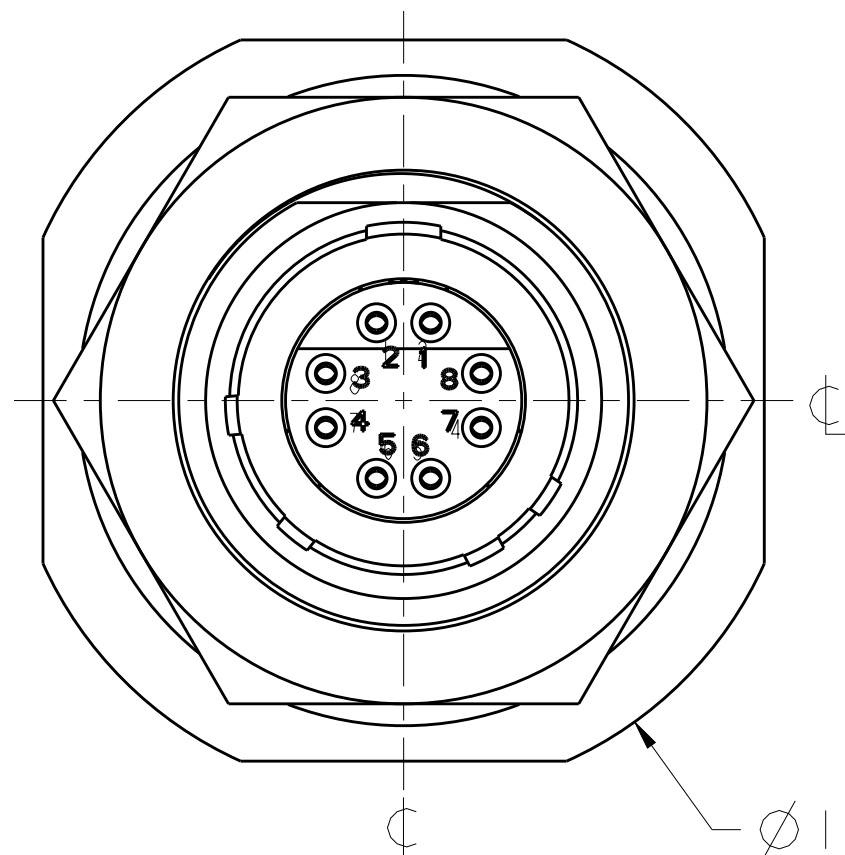
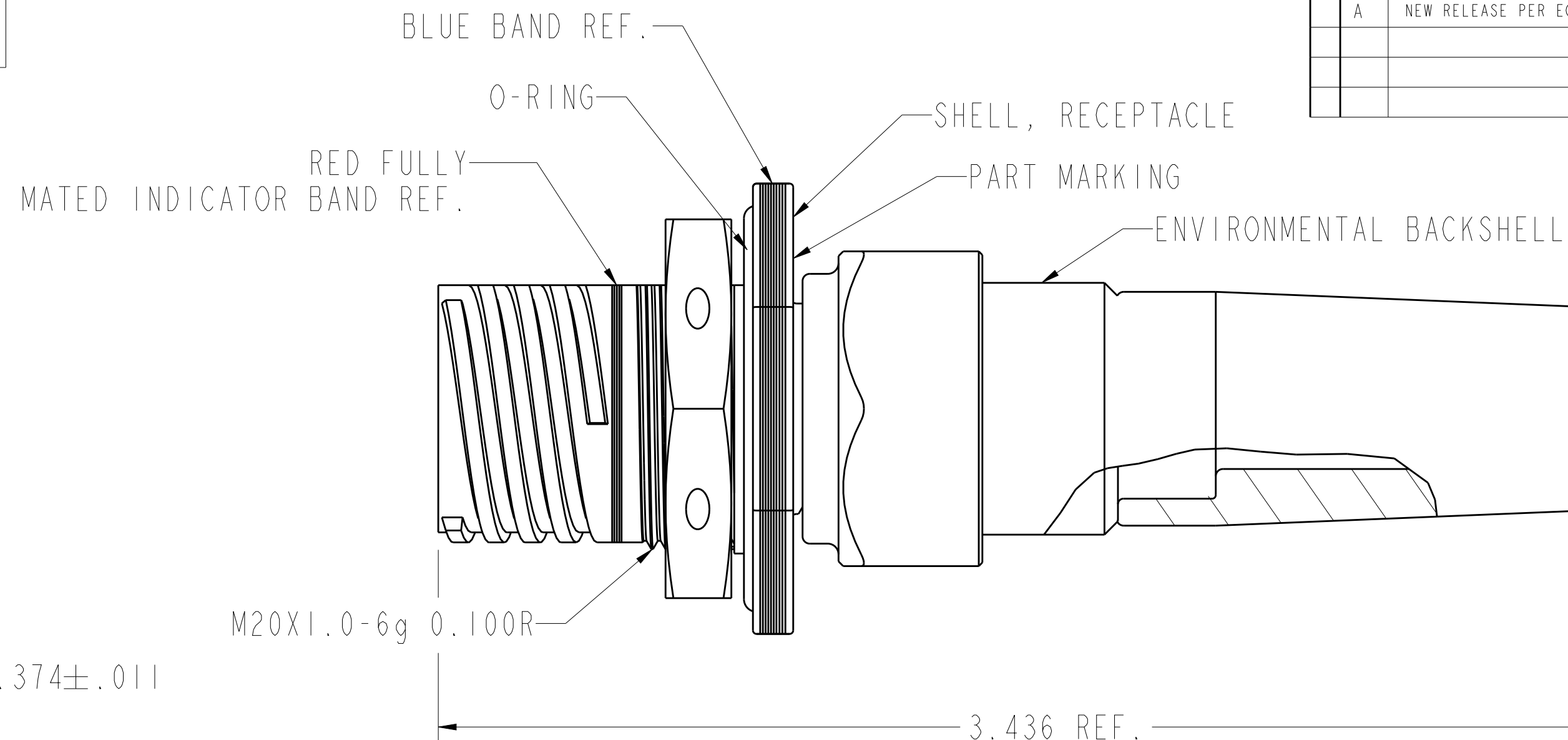


LOC	DIST	REVISIONS					
		P	LTR	DESCRIPTION	DATE	DWN	APVD
-	-		A	NEW RELEASE PER ECO-16-000996	160122	JPF	JPF

PROPERTY OF THE TE CONNECTIVITY
THIS INFORMATION IS CONFIDENTIAL AND PROPERTY TO TYCO ELECTRONICS CORPORATION
AND ITS WORLDWIDE SUBSIDIARIES AND AFFILIATES (TE). IT MAY NOT BE DISCLOSED TO
ANYONE, OTHER THAN TE PERSONNEL, WITHOUT AUTHORIZATION FROM TE (www.TE.com).



PIN INSERT MARKING SHOWN ABOVE



6. COMPOSITE WEIGHT WITHOUT MODULES AND CABLE: 0.0674 POUNDS.
METAL WEIGHT WITHOUT MODULES AND CABLE: 0.079 POUNDS.
PIN MODULE WEIGHT: .005 LBS.
SOCKET MODULE WEIGHT: .011 LBS.

5. MATES WITH CFX26x1108xxx.

4. FINISH: SHELL/BACKSHELL - SEE TABLE.
CONTACTS - SEE PART NUMBER BREAKDOWN.

3. MATERIAL: SHELL - SEE TABLE.
BACKSHELL/COUPLING RING - ALUMINUM ALLOY.
CONTACTS - COPPER ALLOY.
RESILIENT INSERTS/BACKSHELL GROMMET - SILICONE ELASTOMER.
PLASTIC INSERTS - THERMOPLASTIC.

2. FOR AVAILABILITY CONSULT FACTORY.

 ALL DIMENSIONS ARE IN INCHES UNLESS OTHERWISE SPECIFIED.

MODIFICATION

- KEYING POSITION:
N, A, B, C, D, E

- CONTACT TERMINATION:
Z = CRIMPED CONTACT
A THROUGH Y = EXTENDED CONTACT
(SEE SHEET 2)

- CONTACT FINISH:

- P = PIN LOCALIZED GOLD FINISH
- S = SOCKET LOCALIZED GOLD FINISH
- F = PIN FULL GOLD FINISH
- G = SOCKET FULL GOLD FINISH
- H = PIN HI REL FINISH
- J = SOCKET HI REL FINISH
- A = LESS PIN CONTACT
- B = LESS SOCKET CONTACT




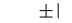
SHELL SIZE/INSERT ARRANGMENT

PLATING/SHELL MATERIAL:
SEE TABLE

- BASIC IDENTIFIER

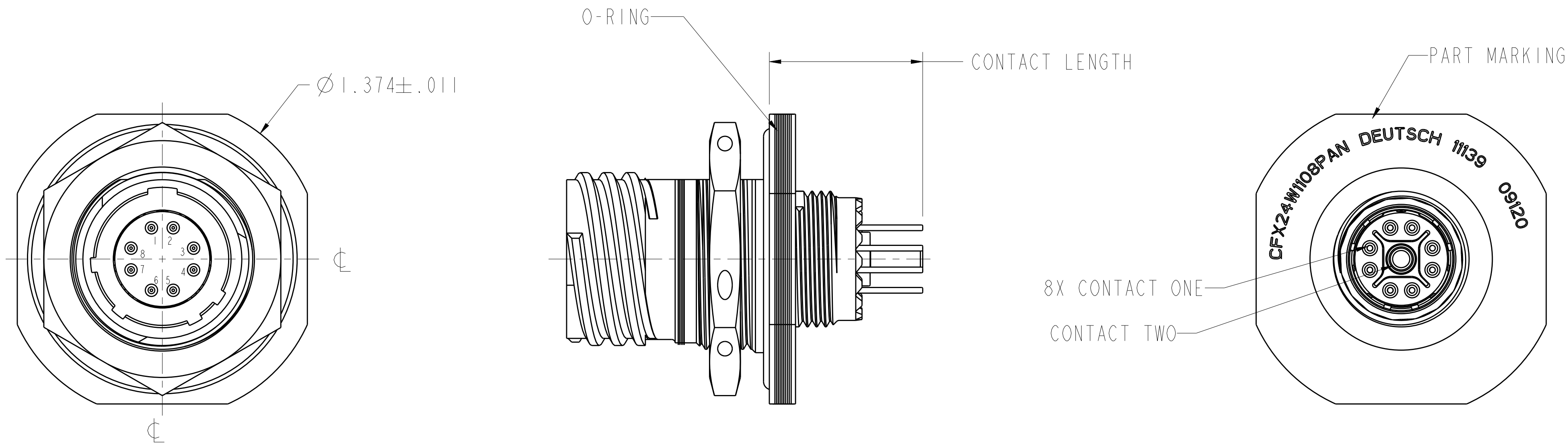
PART NUMBER (x) ₁	PLATING 	SHELL MATERIAL 
M	NICKEL	COMPOSITE
J	O.D. CAD	COMPOSITE
F	NICKEL	ALUMINUM
W	O.D. CAD	ALUMINUM
S	NICKEL	STAINLESS STEEL 
T	TEFLON NICKEL	ALUMINUM 
Z	BLACK ZINC NICKEL	ALUMINUM 

SIZE 11 PART NUMBER(x) ₃	POS
CFX24x1108xZN	N
CFX24x1108xZA	A
CFX24x1108xZB	B
CFX24x1108xZC	C
CFX24x1108xZD	D
CFX24x1108xZE	E

THIS DRAWING IS A CONTROLLED DOCUMENT.		DWN JPF 140219		 TE Connectivity					
DIMENSIONS: INCH		CHK JPF 160122		NAME CONNECTOR, RECEPTACLE JAM NUT MOUNTING, THREADED COUPLING, 1108 ARRANGEMENT					
TOLERANCES UNLESS OTHERWISE SPECIFIED:		APVD AR 160122							
		PRODUCT SPEC		SIZE CAGE CODE DRAWING NO				RESTRICTED TO	
		APPLICATION SPEC							
MATERIAL		WEIGHT		A2		11139		C-CFX24x1108xxx	
				CUSTOMER DRAWING		SCALE		3.000	
						SHEET		1 OF 2	
								REV A	

PROPERTY OF THE TE CONNECTIVITY
THIS INFORMATION IS CONFIDENTIAL AND PROPERTY TO TYCO ELECTRONICS CORPORATION
AND ITS WORLDWIDE SUBSIDIARIES AND AFFILIATES (TE). IT MAY NOT BE DISCLOSED TO
ANYONE, OTHER THAN TE PERSONNEL, WITHOUT AUTHORIZATION FROM TE (www.TE.com).

LOC		DIST		REVISIONS				
P	LTR	DESCRIPTION			DATE	DWN	APVD	
	-	SEE SHEET 1			-	-	-	



PIN INSERT MARKING SHOWN ABOVE

SHELL, RECEPTACLE WITH EXTENDED CONTACTS

CONTACT CONFIGURATION IDENTIFIER	CONTACT LENGTH ±.025	CONTACT ONE DIAMETER ±.003	CONTACT TWO DIAMETER ±.003	PLATING
A	.662	.025	.095	GOLD OVER NICKEL
B	TBD			
C	TBD			
D	TBD			

JAM NUT MOUNTING
PANEL THICKNESS: 0.062-0.126 in.
TORQUE: 40/45 inch-lbs

THIS DRAWING IS A CONTROLLED DOCUMENT.		DWN	140219	TE Connectivity			
		CHK	160122				
		APVD	160122	NAME			
		AR		CONNECTOR, RECEPTACLE JAM NUT MOUNTING, THREADED COUPLING, 1108 ARRANGEMENT			
DIMENSIONS: INCH		TOLERANCES UNLESS OTHERWISE SPECIFIED:		SIZE	CAGE CODE	DRAWING NO	RESTRICTED TO
				A2	11139	©-CFX24x1108xxx	-
MATERIAL				Customer Drawing		SCALE 3.000	SHEET 2 OF 2
						REV A	