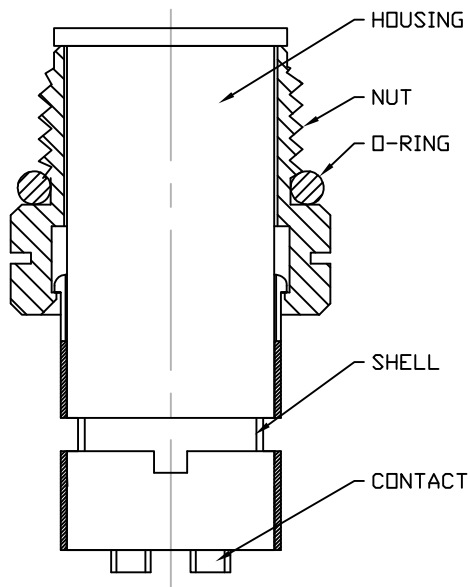


DESCRIPTION: M12 MALE - CABLE MOUNT - 5 POS. - SHIELDED



NOTE:

MATERIAL

HOUSING: PBT UL94V-0, BLACK
CONTACT: BRASS
NUT: BRASS
O-RING: EPDM, BLACK
SHELL: BRASS

FINISH

CONTACT: GOLD PLATED
OVER 50μ" NICKEL
NICKEL PLATED
SHELL: BRIGHT TIN PLATED

ELECTRICAL

RATED CURRENT: 4A
RATED VOLTAGE: 60V
INSULATION RESISTANCE: 100 MΩhms MIN.
CONTACT RESISTANCE: 10 mΩhms MAX.
WATER PROOF: IP67

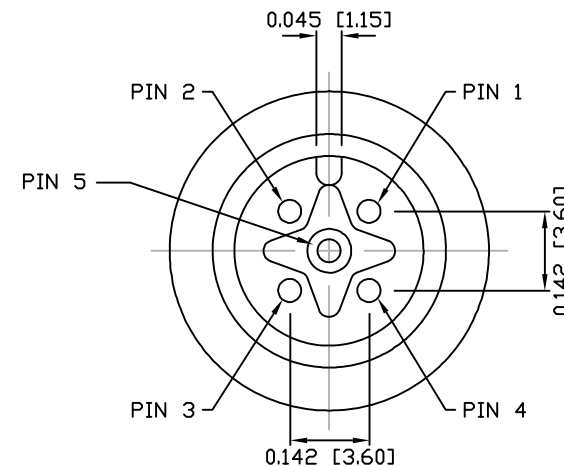
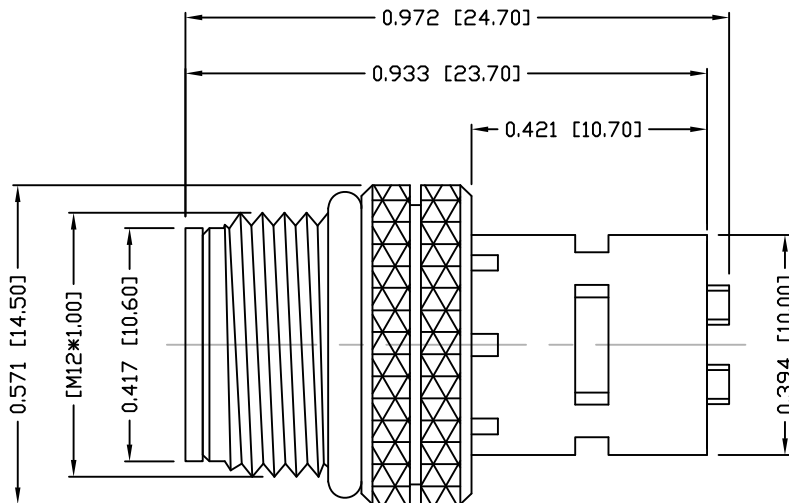
ENVIRONMENT

OPERATION TEMPERATURE: -40°C TO +85°C
MAX WIRE AWG: 22

858-005-103RSSY

3 = BRASS/TIN (B/T) SHELL & BRASS/NICKEL NUT
S = STAINLESS STEEL (SS) SHELL & NUT
T = B/T SHELL / SS NUT

1 = GOLD FLASH
4 = 10μ" GOLD



RoHS COMPLIANT

UNITS = INCHES [MM]

DO NOT SCALE FROM DRAWING



THESE DRAWINGS AND SPECIFICATIONS ARE THE PROPERTY OF NorComp AND SHALL NOT BE REPRODUCED, COPIED OR USED AS THE BASIS FOR THE MANUFACTURE OR SALE OF APPARATUS WITHOUT WRITTEN PERMISSION.

DRAWN:

M. SIGMON

DATE:

03-07-16

NorComp

SCALE:

NTS

SHEET

1

OF

1

REV

3

DWG NO.

858-005-103RSSY