

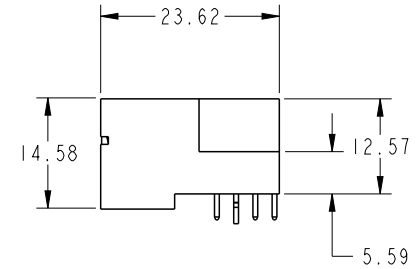
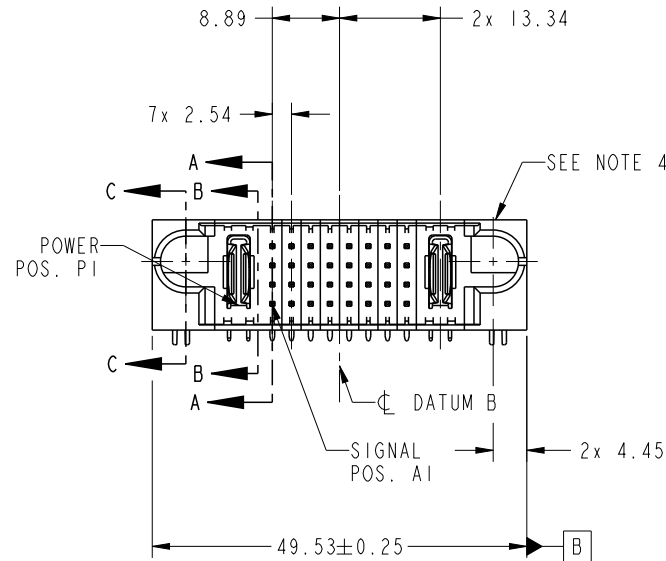


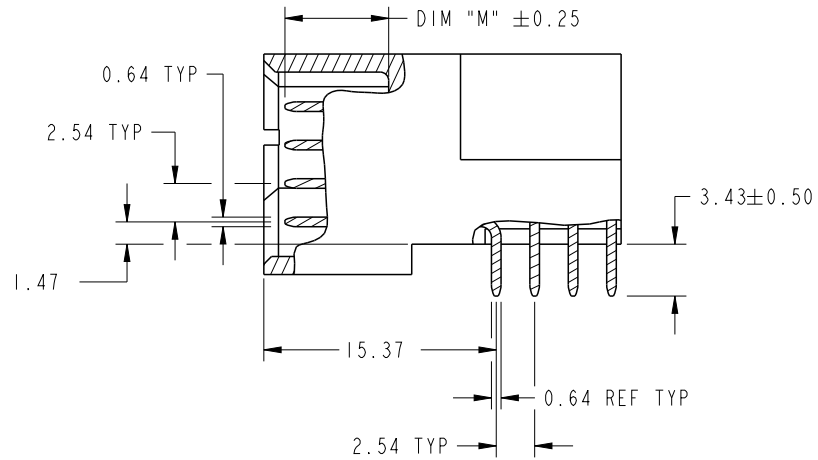
PRODUCT NO.	ROWS	POWER SIGNAL POWER								POWER					
		E1	P1	1	2	3	4	5	6	7	8	P2	E2		
51720-10103201AALF	D C B A		PA	UUUUUUUUUU	TTTTTTTTTT	SSSSSSSSSS	RRRRRRRRRR	PA							



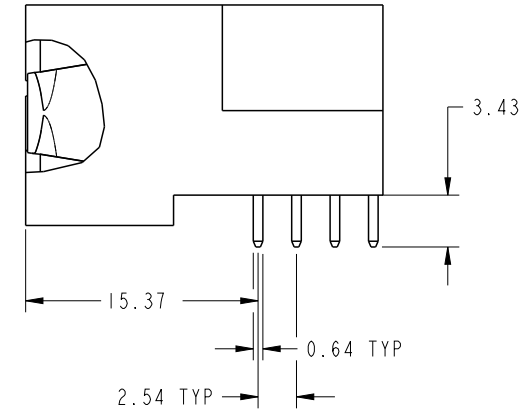
CODE	DIM "M" MATING LENGTH	CONTACT TYPE
U	[6.86]	SIGNAL
T	[6.86]	SIGNAL
S	[6.86]	SIGNAL
R	[6.86]	SIGNAL
PA	[N/A]	POWER
HA	[N/A]	HOLD-DOWN

spec ref		See Notes		dr	Ruan MT	2016/04/28	<div>projection</div> <div></div>	<div>MM</div> <div></div>	size	A4	scale	1:1		
tolerance std		TOLERANCES UNLESS OTHERWISE SPECIFIED				ecn no			-					
See Notes						chr			Fancy Zhang	2016/05/10	rel level			Released
						appr			Pei-Ming Zheng	2016/05/10	product family		PwrBlade	
surface	<div>✓</div>	linear	0.X	±0.5	Amphenol FCI	title IP + 32S + IP RIGHT ANGLE STB HEADER			dwg no	51720-10103201AA		rev	A	
			0.XX	±0.25										
			0.XXX	±0.1										
		angular	0°	±2°										cat. no.

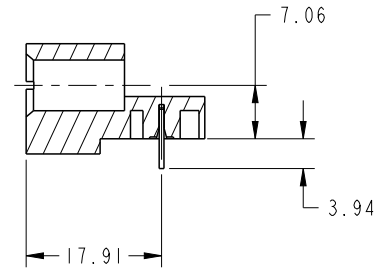
PRODUCT NUMBER
51720-10103201AALF





BROKEN-OUT SECTION A-A
SCALE 2:1



BROKEN-OUT SECTION B-B
SCALE 2:1

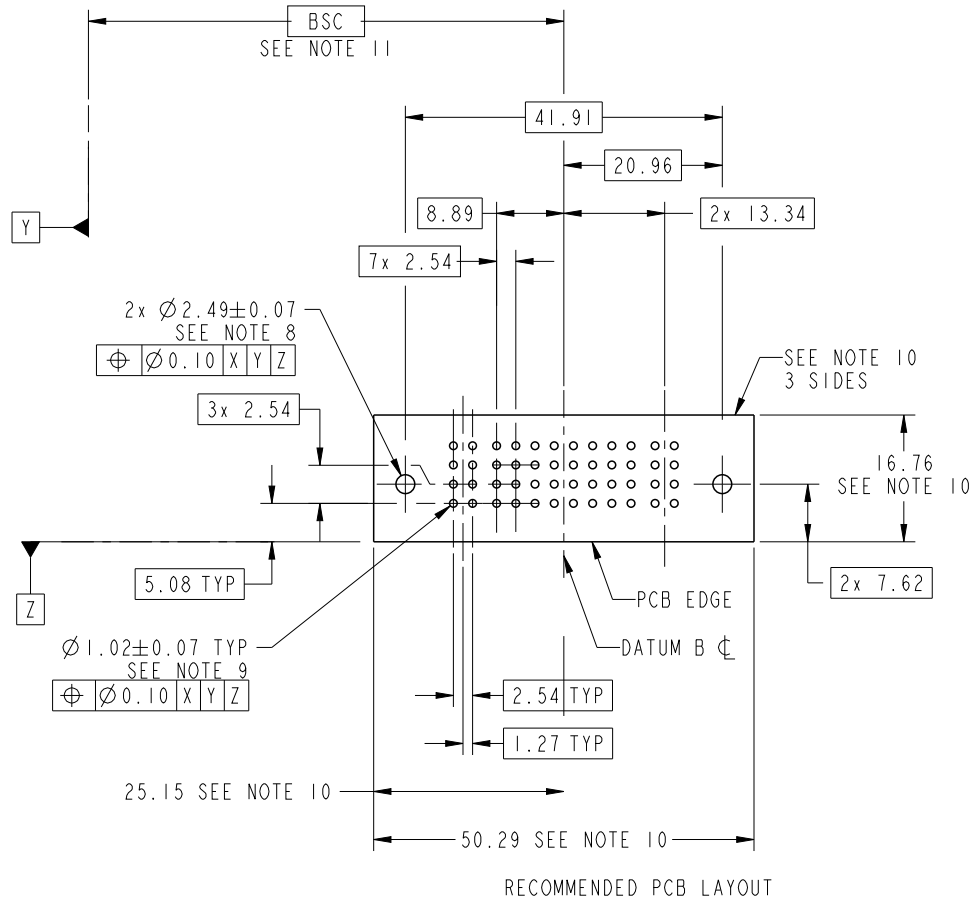


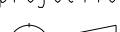

SECTION C-C

spec ref		See Notes		dr	Ruan MT	2016/04/28	<div>projection</div> <div></div>	<div>MM</div> <div></div>	size	A4	scale	1:1		
tolerance std	TOLERANCES UNLESS OTHERWISE SPECIFIED			eng	Ruan MT	2016/05/10			ecn no -					
				chr	Fancy Zhang	2016/05/10			rel level Released					
				appr	Pei-Ming Zheng	2016/05/10			product family PwrBlade					
See Notes														
surface	<div>✓</div>	linear	0.X	±0.5	Amphenol FCI	title	IP + 32S + IP			dwg no	51720-10103201AA		rev	A
			0.XX	±0.25										
			0.XXX	±0.1										
	angular	0°	±2°		cat. no.	-	Product - Customer Drw				sheet 2 of 4			

PRODUCT NUMBER

51720-10103201AALF



spec ref	See Notes			dr	Ruan MT	2016/04/28	<div>projection</div> 	<div>MM</div> 	size	A4	scale	1:1	
tolerance std	TOLERANCES UNLESS OTHERWISE SPECIFIED			eng	Ruan MT	2016/05/10			ecn no	-			
See Notes				chr	Fancy Zhang	2016/05/10			rel level			Released	
				appr	Pei-Ming Zheng	2016/05/10			product family			PwrBlade	
<div>surface</div> <div>✓</div>	linear	0.X	±0.5	<div>Amphenol</div> <div>FCI</div>	title	IP + 32S + IP			dwg no	51720-10103201AA		rev	A
		0.XX	±0.25										
		0.XXX	±0.1										
	angular	0°	±2°		cat. no.	-	Product - Customer Drw			sheet 3 of 4			

PRODUCT NUMBER

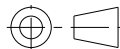



51720-10103201AALF

NOTES:

1. DIMENSIONS AND TOLERANCES ARE IN ACCORDANCE WITH
ASME Y14.5M, 1994 UNLESS OTHERWISE SPECIFIED.

CONNECTOR NOTES:

2. HOUSING MATERIAL: UL 94 V-0 GLASS FILLED HIGH-TEMP THERMOPLASTIC
POWER CONTACT MATERIAL: COPPER ALLOY
SIGNAL PIN MATERIAL: COPPER ALLOY
3. SEE FCI PLATING SPEC 10064183.
4. MANUFACTURER'S NAME, DATE CODE AND OPTIONAL P/N TO APPEAR ON
THIS SURFACE. THE MARK CAN BE OMITTED IF THERE IS NOT ENOUGH
SPACE ON THIS SURFACE.
5. PRODUCT SPECIFICATION GS-12-149.
APPLICATION SPECIFICATION BUS-20-067.
6. PACKAGED IN TRAYS.
- PCB NOTES:
7. ALL HOLE DIAMETERS ARE FINISHED HOLE SIZE.
8. MOUNTING HOLES, WHERE APPLICABLE, ARE UNPLATED.
9. $\varnothing 1.151 \pm 0.025$ DRILLED HOLES PLATED WITH
0.008 MIN SnPb OR Sn OVER 0.03
TO 0.08 Cu PLATING TO ACHIEVE
 $\varnothing 1.02 \pm 0.07$ HOLE.
10. CONNECTOR KEEP-OUT ZONE.
11. DATUM AND BASIC DIMENSIONS ARE ESTABLISHED BY CUSTOMER.

spec ref		See Notes		dr	Ruan MT	2016/04/28			size	A4	scale	1:1	
tolerance std	TOLERANCES UNLESS OTHERWISE SPECIFIED			eng	Ruan MT	2016/05/10			ecn no -				
See Notes				chr	Fancy Zhang	2016/05/10			rel level Released				
				appr	Pei-Ming Zheng	2016/05/10			product family PwrBlade				
surface		linear	0.X	±0.5		title	IP + 32S + IP RIGHT ANGLE STB HEADER		dwg no	51720-10103201AA		rev	A
			0.XX	±0.25									
			0.XXX	±0.1									
		angular	0°	±2°		cat. no.	-	Product - Customer Drw		sheet 4 of 4			