

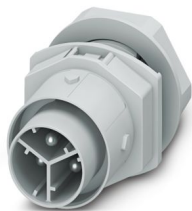
IPD W 3P2,5 M M20 GY - Panel feed-through



1088687

<https://www.phoenixcontact.com/us/products/1088687>

Please be informed that the data shown in this PDF document is generated from our online catalog. Please find the complete data in the user documentation. Our general terms of use for downloads are valid.



Panel feed-through, for connectors, product family: IPD, connection method: Push-in connection, number of positions: 2+PE, M20, Pin, 0.5 mm² ... 2.5 mm², 500 V, 20 A, PA, light gray, coding: P

Your advantages

- Easy distribution of power, as components are plugged directly
- Simple, time-saving wiring in the field with Push-Lock connection
- Reliable installation in harsh environments with IP66, IP68, and IP69K throughout the entire system
- Secure, tool-free locking even in particularly difficult installation situations
- Fast commissioning with preassembled cable assemblies

Commercial data

Item number	1088687
Packing unit	1 pc
Minimum order quantity	1 pc
Sales key	BF51
Product key	BF6LAA
GTIN	4055626891026
Weight per piece (including packing)	30.54 g
Weight per piece (excluding packing)	30.5 g
Customs tariff number	85366990
Country of origin	CN

IPD W 3P2,5 M M20 GY - Panel feed-through



1088687

<https://www.phoenixcontact.com/us/products/1088687>

Technical data

Product properties

Product type	Panel feed-through
Product family	IPD
Number of positions	3
Connection profile	2+PE
Position marking	L, N, PE
Number of connections per position	1
Type	for connectors
Coding	P

Insulation characteristics

Overvoltage category	III
Degree of pollution	3

Data management status

Article revision	03
------------------	----

Connection data

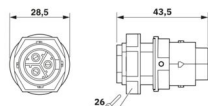
Connection technology

Connection method On the device side	Push-in connection
--------------------------------------	--------------------

Conductor connection

Conductor cross section flexibel	0.5 mm ² ... 2.5 mm ²
Conductor cross section solid	0.5 mm ² ... 2.5 mm ²
Conductor cross section with ferrule	0.5 mm ² ... 2.5 mm ²
Connection cross section AWG	20 ... 14

Dimensions

Dimensional drawing	
Width	28.5 mm
Height	28.5 mm
Length	43.5 mm

Electrical properties

Rated surge voltage (III/3)	6 kV
Rated current	20 A
Rated voltage (III/3)	500 V
Nominal voltage U _N	500 V AC 500 V DC

IPD W 3P2,5 M M20 GY - Panel feed-through



1088687

<https://www.phoenixcontact.com/us/products/1088687>

Nominal current I_N	20 A
-----------------------	------

Mechanical properties

Mechanical data

Insertion/withdrawal cycles	50 (IP66/IP68/IP69K)
	100 (IP66)

Material specifications

Color (Housing)	light gray (RAL 7035)
Material Housing	PA
Material Seal	EPDM
Flammability rating according to UL 94	V0
Contact material	Cu
Contact surface material	Ni/Ag/Sn

Cable/line

Position marking	L, N, PE
------------------	----------

Mounting

Mounting type	M20
---------------	-----

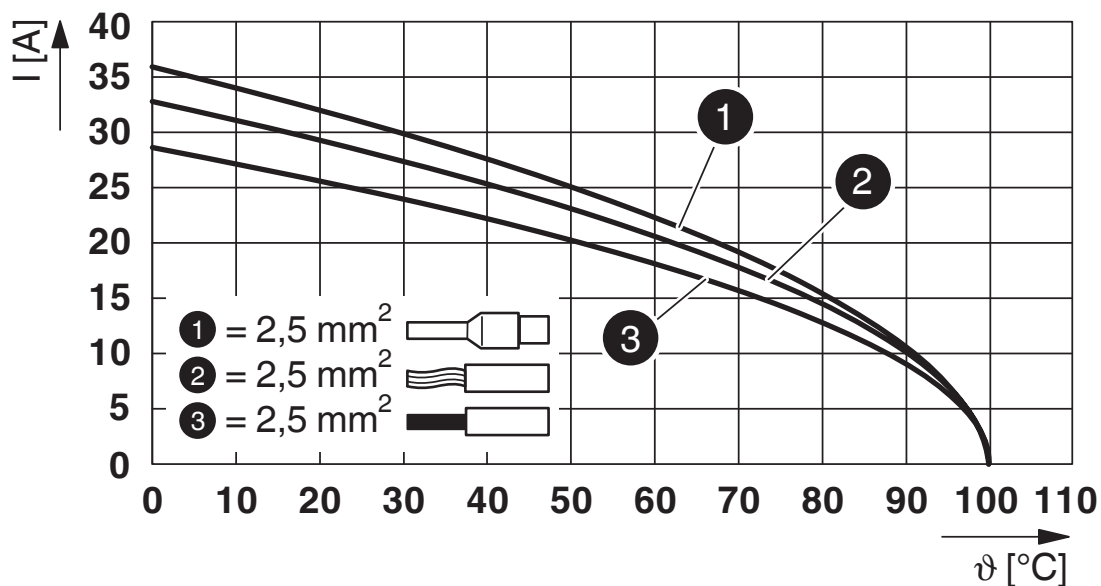
Environmental and real-life conditions

Ambient conditions

Degree of protection	IP66
	IP68 (2 m / 24 h)
	IP69K
	Touch-proof when not plugged in (IP2X)
Impact strength	IK07
Ambient temperature (operation)	-30 °C ... 100 °C
Temperature when conductor connected	-5 °C ... 50 °C
Ambient temperature (storage/transport)	-30 °C ... 100 °C
Resistance to UV radiation	yes

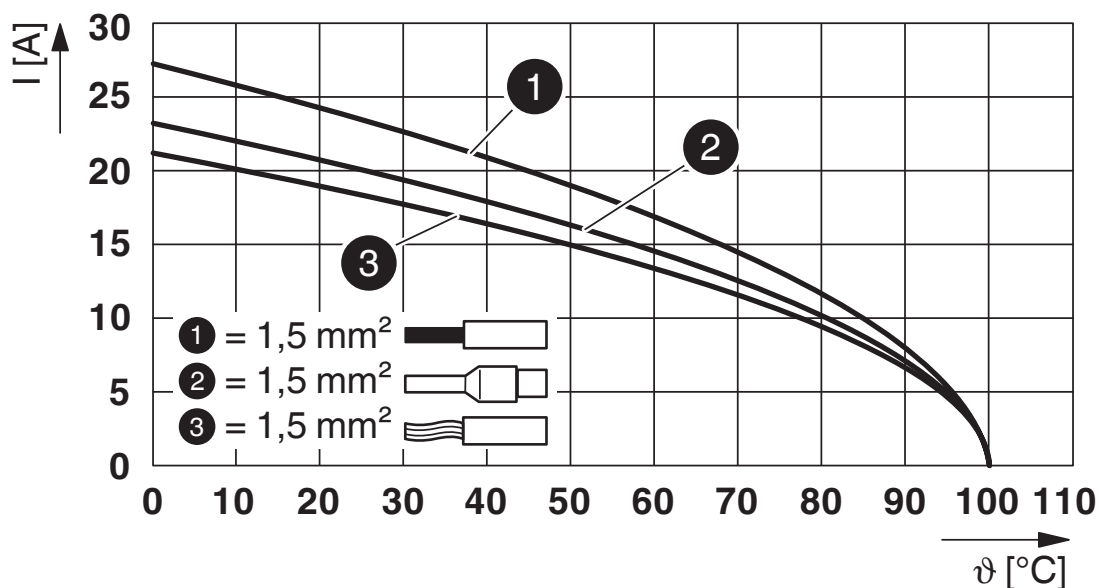
Drawings

Diagram



Derating diagram for 2.5 mm²

Diagram



Derating diagram for 1.5 mm²

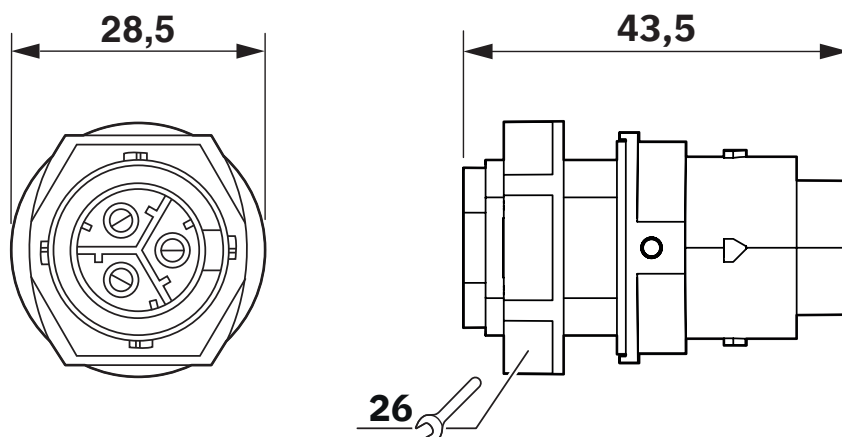
IPD W 3P2,5 M M20 GY - Panel feed-through

1088687

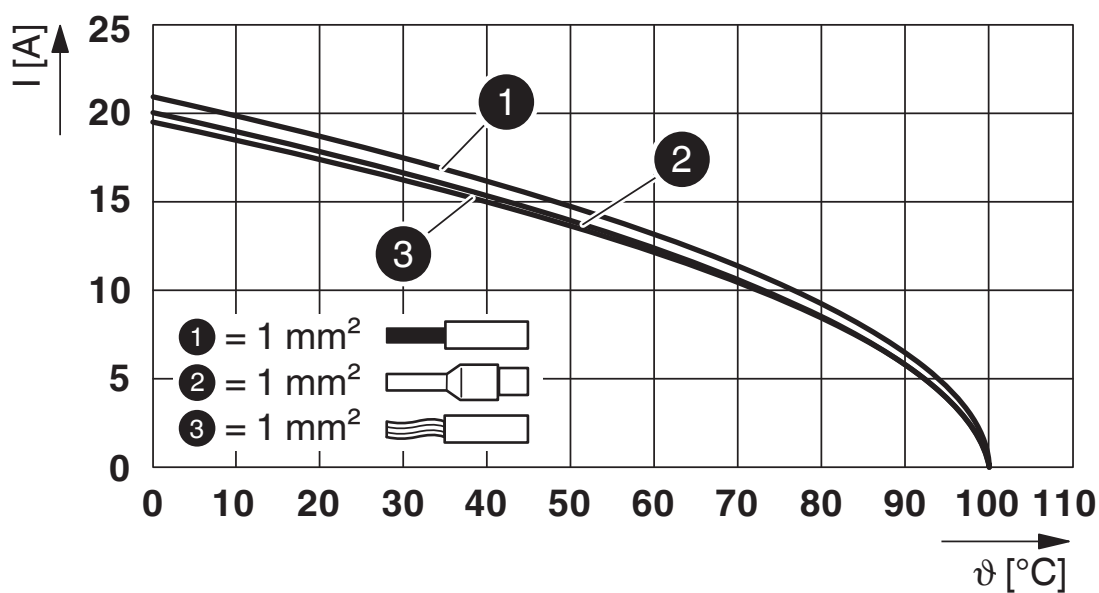
<https://www.phoenixcontact.com/us/products/1088687>



Dimensional drawing



Diagram



Derating diagram for 1.0 mm²

IPD W 3P2,5 M M20 GY - Panel feed-through



1088687

<https://www.phoenixcontact.com/us/products/1088687>

Classifications

ECLASS

ECLASS-11.0	27440602
ECLASS-13.0	27440602
ECLASS-12.0	27440602

ETIM

ETIM 9.0	EC002566
----------	----------

UNSPSC

UNSPSC 21.0	39121500
-------------	----------

IPD W 3P2,5 M M20 GY - Panel feed-through



1088687
<https://www.phoenixcontact.com/us/products/1088687>

Environmental product compliance

EU RoHS	
Fulfills EU RoHS substance requirements	Yes
Exemption	6(c)
China RoHS	
Environment friendly use period (EFUP)	EFUP-E
	No hazardous substances above the limits
EU REACH SVHC	
REACH candidate substance (CAS No.)	Lead(CAS: 7439-92-1)
SCIP	dc990df3-cbaf-4728-9748-3b2f0aecf135

Phoenix Contact 2024 © - all rights reserved
<https://www.phoenixcontact.com>

Phoenix Contact USA
586 Fulling Mill Road
Middletown, PA 17057, United States
(+717) 944-1300
info@phoenixcon.com