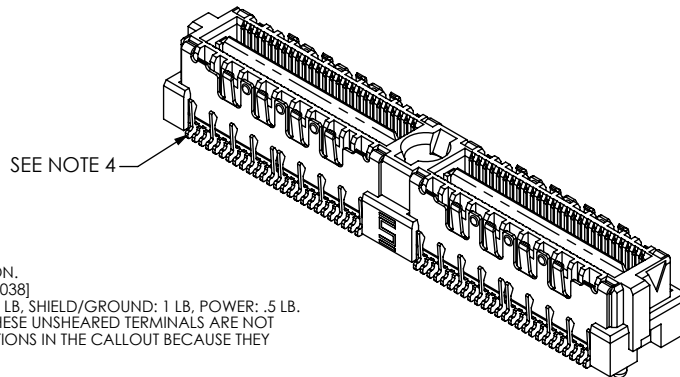
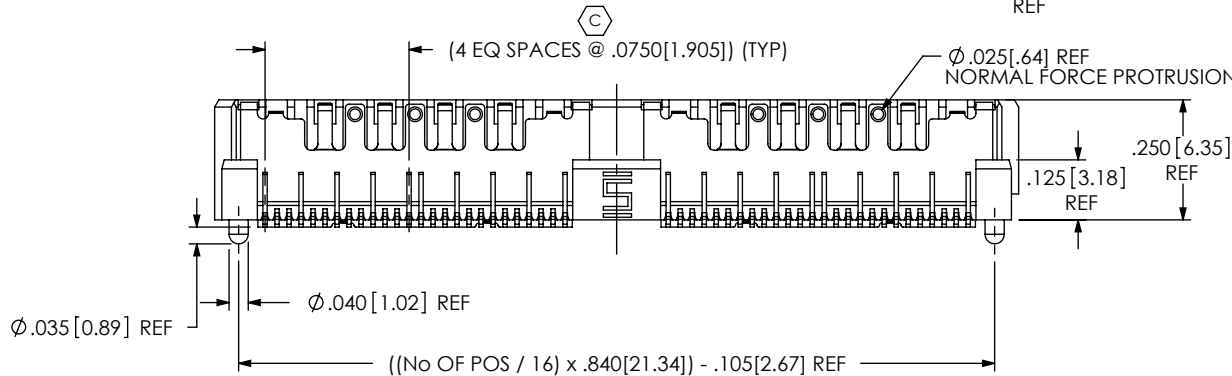
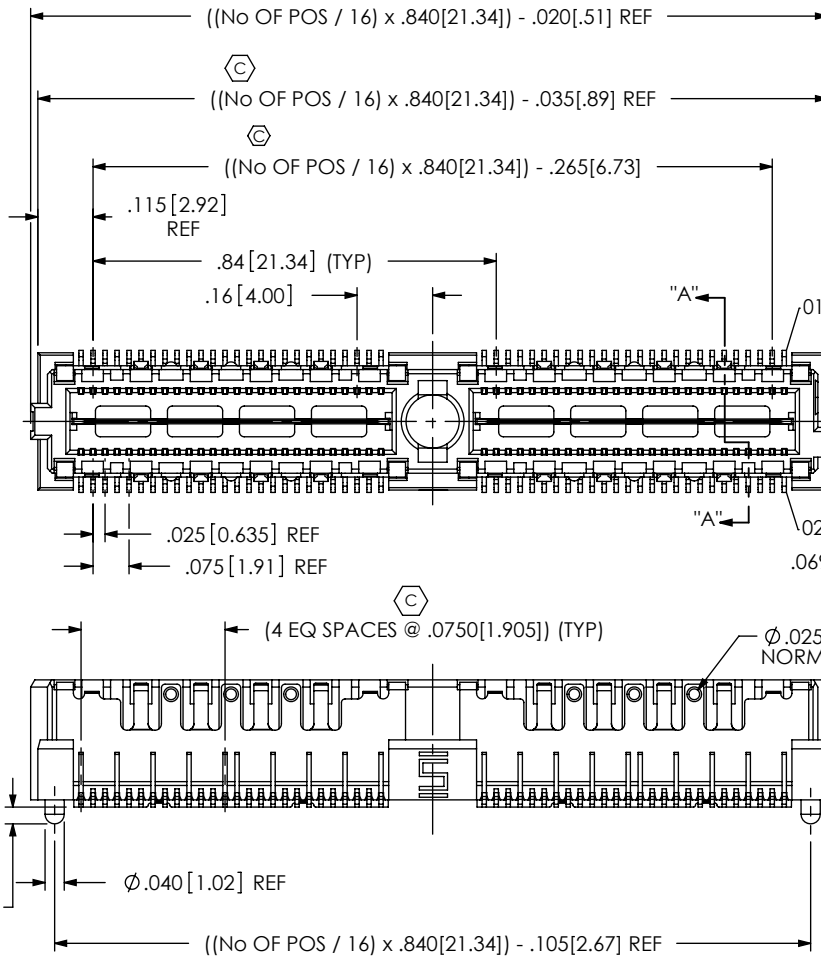


DO NOT
SCALE FROM
THIS PRINT



SEE NOTE 4

NOTES:

1. \odot REPRESENTS A CRITICAL DIMENSION.
2. MAXIMUM BURR ALLOWANCE: .0015 [.038]
3. MINIMUM PUSHOUT FORCE: SIGNAL: .5 LB. SHIELD/GROUND: 1 LB. POWER: .5 LB.
4. DO NOT SHEAR TERMINALS SHOWN; THESE UNSHEARED TERMINALS ARE NOT CONSIDERED IN THE NUMBER OF POSITIONS IN THE CALLOUT BECAUSE THEY ARE GROUNDED TO THE SHIELDS.
5. MAXIMUM VARIANCE: .002 [.05]
6. DIMENSION APPLIES TO CONTACTS & GROUND PLANE.
7. GROUND PLANE PRESS HEIGHT MUST BE .003[.08] LESS THAN THE MAXIMUM HEIGHT OR .001[.03] GREATER THAN THE MINIMUM HEIGHT OF THE TERMINALS.
8. PARTS TO BE PACKAGED IN TRAYS AS STANDARD.
9. LEADSTYLE -11 MAY BE SUBSTITUTED IN PART CALLOUT FOR -06.75 FOR EXISTING CUSTOMERS ONLY

PATENT NUMBERS
6739884/ 7165994
7121849

QMSS-XXX-XX.XX-X-D-DP-X-XXX-XX

No OF PAIRS
-016, -032, -048,
-064, * -080 (PER ROW)

LEAD STYLE
-06.75 (SEE FIG 1, SEE NOTE 9)

PLATING SPECIFICATION
-L: 10 μ " LIGHT GOLD IN CONTACT AREA
MATTE TIN ON TAIL (USE T-1M19-06.75-L)
-H: 30 μ " HEAVY GOLD IN CONTACT AREA
3 μ " GOLD ON TAIL (USE T-1M19-06.75-H)
(ALL PLATING STYLES USE
SH1-XX-L & T-1G19-06.75-L)

ROW SPECIFICATION

-D: DOUBLE
-DP: DIFFERENTIAL PAIRS
SEE FIG 1 FOR SHIELD BEAM CONFIGURATION

OPTION

** -A: ALIGNMENT PIN

* = NOT TOOLED
** = NOT AVAILABLE WITH PXX OPTION

PACKAGING OPTION

-TR: TAPE & REEL
(-016 THRU -048 WITHOUT OPTIONS
-GP OR -PXX, -016 THRU -032 WITH
OPTIONS -GP OR -PXX)

OPTION

** -GP: GUIDE POSTS
(SEE FIG 3, SHEET 2)
** -K: KAPTON PAD
(SEE FIG 2, SHEET 2)
-PC4: POWER COMBO 4 (.062" THICK BOARD)
(SEE FIG 4, SHEET 3)
-PC8: POWER COMBO 8 (.062" THICK BOARD)
(SEE FIG 4, SHEET 3)
-PT4: POWER COMBO 4 (.093" THICK BOARD)
(SEE FIG 4, SHEET 3)
-PT8: POWER COMBO 8 (.093" THICK BOARD)
(SEE FIG 4, SHEET 3)

[-PXX NOT AVAILABLE WITH -GP, -A, -K]
[-PXX AVAILABLE ON POSITIONS
-016, -032 & -048 ONLY AND ON
LEAD STYLE -06.75 ONLY]

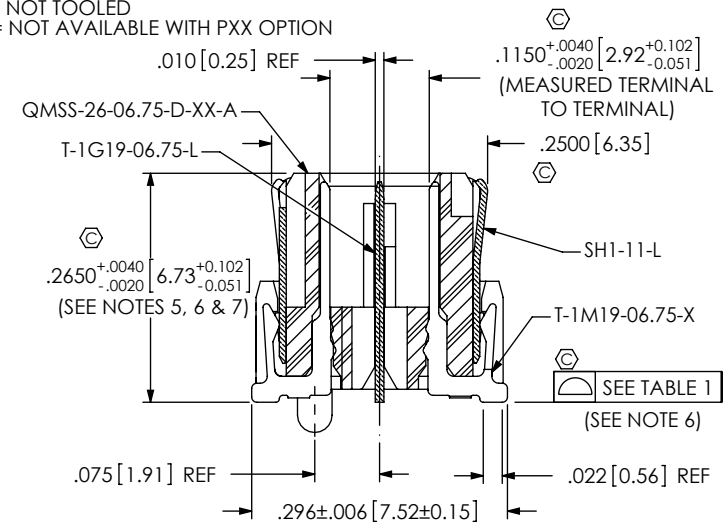


FIG 1
-06.75 LEAD STYLE
(QMSS-032-06.75-X-D-DP-A SHOWN)
(MATED HEIGHT WITH QFSS-04.25: .433 [11.00] REF)

SECTION "A"- "A"
SCALE 4.5 : 1

TABLE 1

No OF PAIRS	No OF BANKS	COPLANARITY
-016 THRU -048	1 THRU 3	.004[.10]
-064 AND -080	4 AND 5	.006[.15]

UNLESS OTHERWISE SPECIFIED,
DIMENSIONS ARE IN INCHES.

TOLERANCES ARE:

DECIMALS ANGLES
.XX: $\pm .01$ [.3] 2°
.XXX: $\pm .005$ [.13]
.XXXX: $\pm .0020$ [.051]

PROPRIETARY NOTE

THIS DOCUMENT CONTAINS INFORMATION
CONFIDENTIAL AND PROPRIETARY TO
SAMTEC, INC. AND SHALL NOT BE REPRODUCED
OR TRANSFERRED TO OTHER DOCUMENTS OR
DISCLOSED TO OTHERS OR USED FOR ANY
PURPOSE OTHER THAN THAT WHICH IT WAS
OBTAINED WITHOUT THE EXPRESSED WRITTEN
CONSENT OF SAMTEC, INC.

MATERIAL: DO NOT SCALE DRAWING
INSULATOR: LCP, COLOR: BLACK
TERMINAL, GROUND PLANE,
& SHIELD: PHOS BRONZE

SHEET SCALE: 2.5:1

DESCRIPTION:
.635mm DIFFERENTIAL PAIRS SHIELDED TERMINAL STRIP

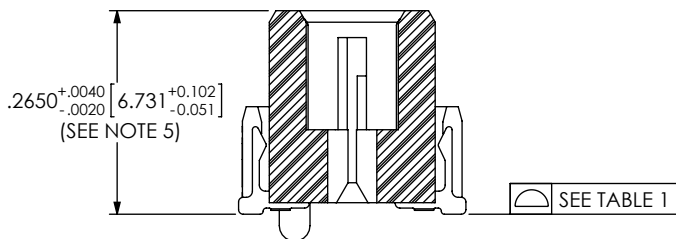
DWG. NO.
QMSS-XXX-XX.XX-X-D-DP-X-XXX-XX

BY: BRATCHER 08/12/03 SHEET 1 OF 3

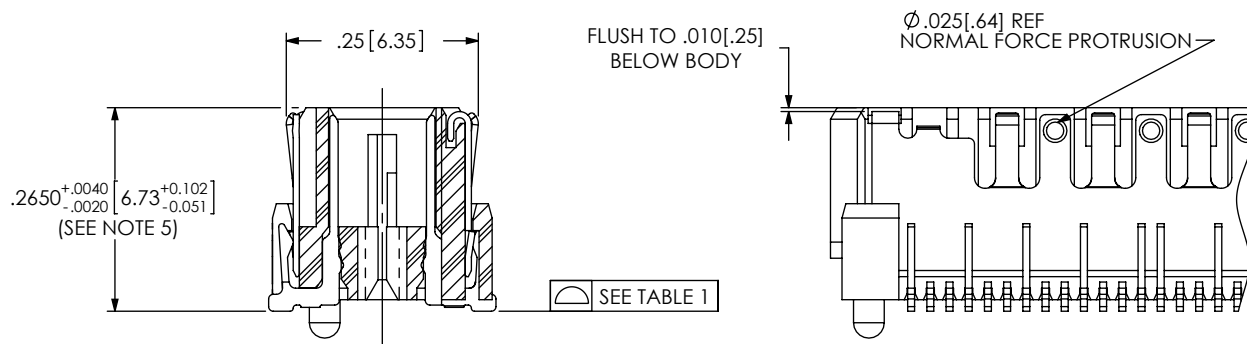
samtec

520 PARK EAST BLVD, NEW ALBANY, IN 47150
PHONE: 812-944-6733 FAX: 812-948-5047
e-Mail: info@SAMTEC.com code: 55322

IN-PROCESS 1



IN-PROCESS 2



TERMINAL DETAILS

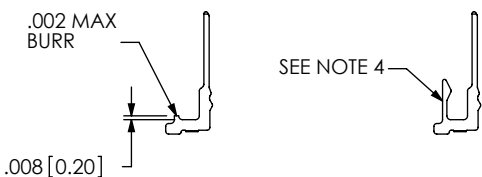


FIG 3

-GP: GUIDE POST OPTION
(QMSS-032-06.75-X-D-DP-A-GP SHOWN)

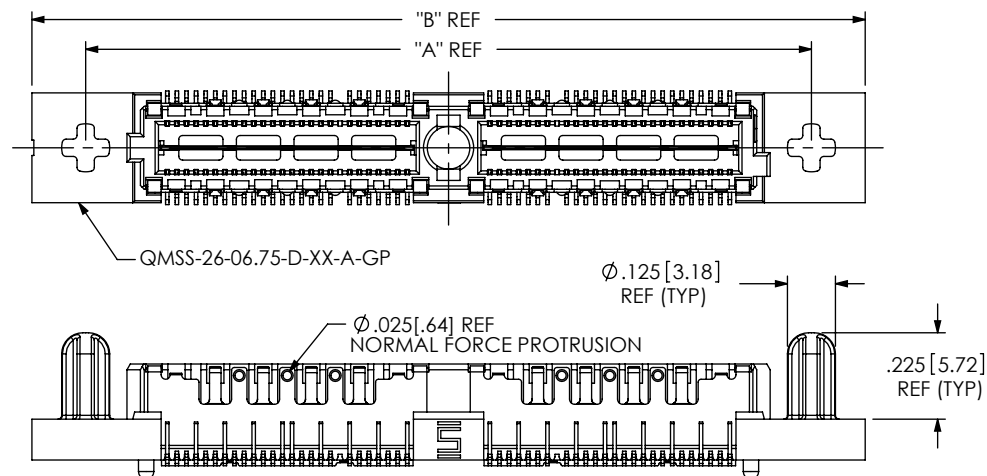


FIG 2

-K: KAPTON PAD OPTION
(USE K-500-300)

(USE K-DOT .217-.313-.005 FOR -GP OPTION, NOT APPROVED FOR VISION INTEGRATED KAPTON APPLICATION)
(QMSS-032-06.75-X-D-DP-A-K SHOWN)

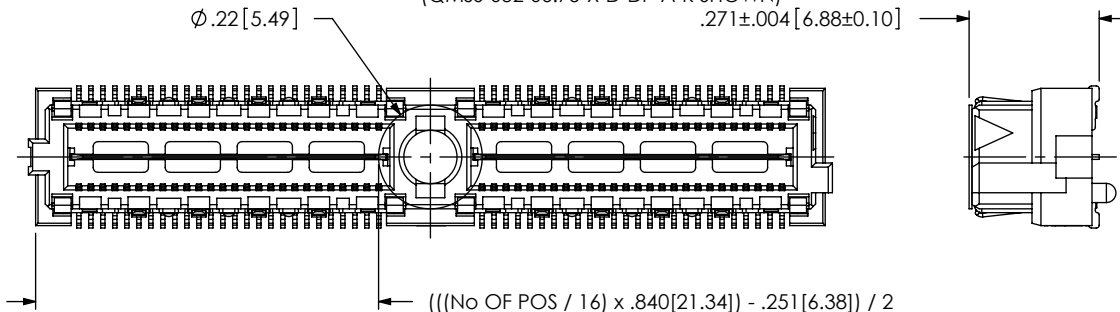


TABLE 2

ASSEMBLY	"A"	"B"
QMSS-016-06.75-X-D-GP	1.050 [26.67]	1.330 [33.78]
QMSS-032-06.75-X-D-GP	1.890 [48.00]	2.170 [55.12]
QMSS-048-06.75-X-D-GP	2.730 [69.34]	3.010 [76.45]
QMSS-064-06.75-X-D-GP	3.570 [90.68]	3.850 [97.79]
QMSS-080-06.75-X-D-GP	4.410 [112.01]	4.690 [119.13]

PROPRIETARY NOTE

THIS DOCUMENT CONTAINS INFORMATION
CONFIDENTIAL AND PROPRIETARY TO
SAMTEC, INC. AND SHALL NOT BE REPRODUCED
OR TRANSFERRED TO OTHER DOCUMENTS OR
DISCLOSED TO OTHERS OR USED FOR ANY
PURPOSE OTHER THAN THAT WHICH IT WAS
OBTAINED WITHOUT THE EXPRESSED WRITTEN
CONSENT OF SAMTEC, INC.

DO NOT SCALE DRAWING

SHEET SCALE: 2.5:1

samtec

520 PARK EAST BLVD, NEW ALBANY, IN 47150
PHONE: 812-944-6733 FAX: 812-948-5047
e-Mail: info@SAMTEC.com code: 55322

DESCRIPTION:

.635mm DIFFERENTIAL PAIRS SHIELDED TERMINAL STRIP

DWG. NO.

QMSS-XXX-XX.XX-X-D-DP-X-XXX-XX

BY: BRATCHER 08/12/03

SHEET 2 OF 3

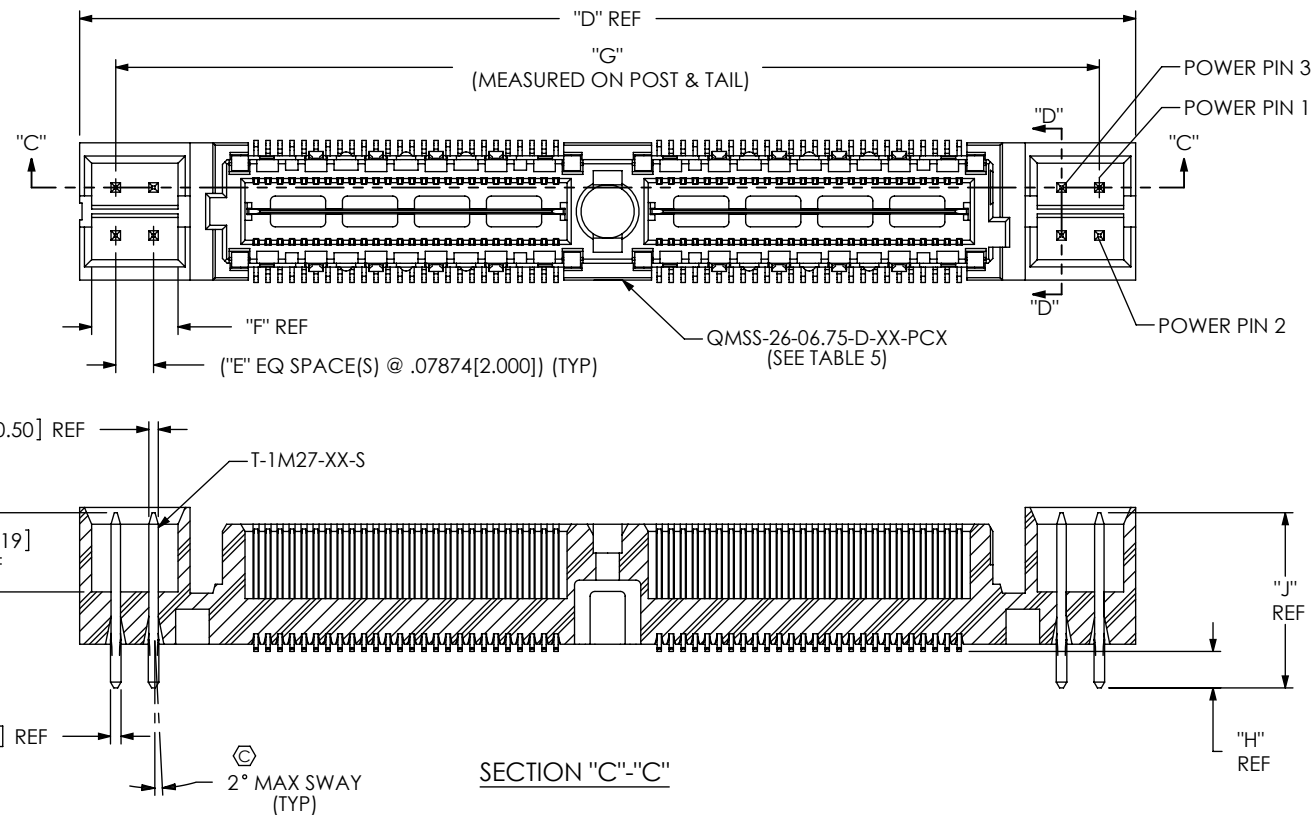


FIG 4 -PXX OPTION

POWER COMBO OPTIONS (-PXX)
 QMSS-032-06.75-X-D-DP-PC4 SHOWN
 (SAME AS FIG 1, UNLESS OTHERWISE STATED)
 [NOT AVAILABLE WITH -GP, -A, OR -K OPTION]
 [AVAILABLE ON -016, -032 & -048 POSITIONS ONLY]

TABLE 5

ASSEMBLY	BODY	"D"	"E"	"F"	"G"
QMSS-016-06.75-X-DP-X-PX4	QMSS-26-06.75-D-01-PC4	1.360[34.54]	1	.180[4.57]	1.209[30.71]
QMSS-016-06.75-X-DP-X-PX8	QMSS-26-06.75-D-01-PC8	1.675[42.55]	3	.337[8.56]	1.524[38.71]
QMSS-032-06.75-X-DP-X-PX4	QMSS-26-06.75-D-02-PC4	2.200[55.88]	1	.180[4.57]	2.049[52.04]
QMSS-032-06.75-X-DP-X-PX8	QMSS-26-06.75-D-02-PC8	2.515[63.88]	3	.337[8.56]	2.364[60.05]
QMSS-048-06.75-X-DP-X-PX4	QMSS-26-06.75-D-03-PC4	3.040[77.22]	1	.180[4.57]	2.889[73.38]
QMSS-048-06.75-X-DP-X-PX8	QMSS-26-06.75-D-03-PC8	3.355[85.22]	3	.337[8.56]	3.204[81.38]

TABLE 6

POWER OPTION	TERMINAL	"H"	"J"	"K"	"L"
PC4 / PC8	T-1M27-01-S	.071[1.80]	.365[9.27]	.086[2.18]	.124[3.15]
PT4 / PT8	T-1M27-03-S	.110[2.79]	.400[10.16]	.125[3.18]	.159[4.04]

F:\DWG\MISC\MKTG\QMSS-XXX-XX.XX-X-D-DP-X-XXX-XX-MKT.SLDDRW

PROPRIETARY NOTE

THIS DOCUMENT CONTAINS INFORMATION
 CONFIDENTIAL AND PROPRIETARY TO
 SAMTEC, INC. AND SHALL NOT BE REPRODUCED
 OR TRANSFERRED TO OTHER DOCUMENTS OR
 DISCLOSED TO OTHERS OR USED FOR ANY
 PURPOSE OTHER THAN THAT WHICH IT WAS
 OBTAINED WITHOUT THE EXPRESSED WRITTEN
 CONSENT OF SAMTEC, INC.

DO NOT SCALE DRAWING

SHEET SCALE: 2.5:1

samtec

520 PARK EAST BLVD, NEW ALBANY, IN 47150
 PHONE: 812-944-6733 FAX: 812-948-5047
 e-Mail: info@SAMTEC.com code: 55322

DESCRIPTION:

.635mm DIFFERENTIAL PAIRS SHIELDED TERMINAL STRIP

DWG. NO.

QMSS-XXX-XX.XX-X-D-DP-X-XXX-XX

BY: BRATCHER 08/12/03

SHEET 3 OF 3