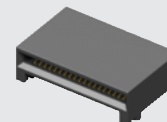
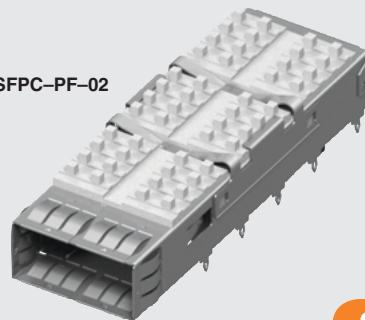


QSFP8-PF-02



QSFP8-038-01-L-D-RA1

(0,80 mm) .0315"

QSFP8, QSFP8, QSFP8 SERIES

# QSFP CONNECTOR & CAGE

Mates with:  
QSFP8

## SPECIFICATIONS

For complete specifications and recommended PCB layouts see [www.samtec.com/QSFP8](http://www.samtec.com/QSFP8)

**Insulator Material:**  
LCP

**Contact Material:**  
Phosphor Bronze

**Ground Plane:**  
Phosphor Bronze

**Plating:**  
Au or Sn over 50µ" (1.27 µm) Ni

**Current Rating (QSFP8/Card):**  
1.6 A per pin  
(1 pin powered per row)

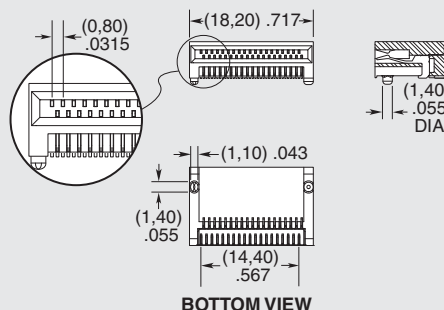
## RECOGNITIONS

For complete scope of recognitions see [www.samtec.com/quality](http://www.samtec.com/quality)



**Note:** Some lengths, styles and options are non-standard, non-returnable.

QSFP8	NO. OF POSITIONS	CARD THICKNESS	PLATING	D	RA1
	-038 = Total Number of Positions	-01 = (1,00 mm) .039" thick card		-L = 10µ" (0,25 µm) Gold on contact, Matte Tin on tail	



BOTTOM VIEW

Use with: QSFP8

## SPECIFICATIONS

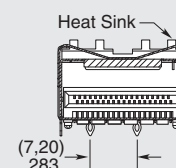
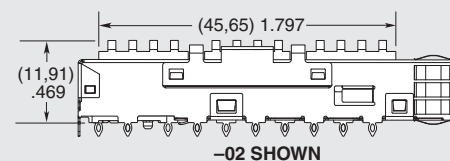
For complete specifications see [www.samtec.com/QSFP8](http://www.samtec.com/QSFP8) or [www.samtec.com/QSFP8](http://www.samtec.com/QSFP8)

TYPE	TERMINATION	OPTION
QSFP8 = Cage QSFP8 = Cage and Connector Kit	-PF = Press Fit	-01 = Without Heat Sink -02 = With Heat Sink -03 = With Heat Sink and clip packaged separately (Recommended for cage press fit processing)

## APPLICATION



QSFP8/QSFP8 cage & connector kit available (QSFP8 Series).



**Note:** Some sizes, styles and options are non-standard, non-returnable.