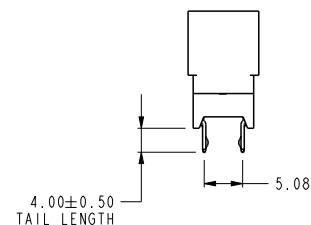
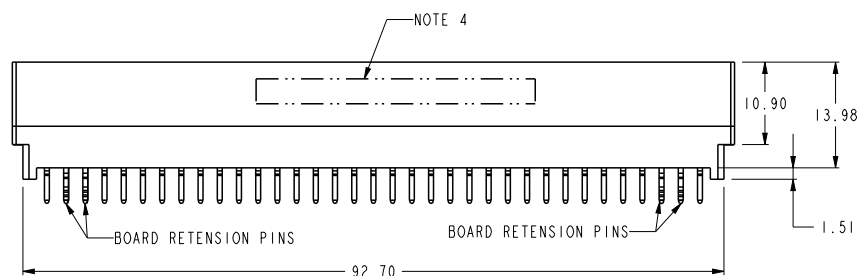
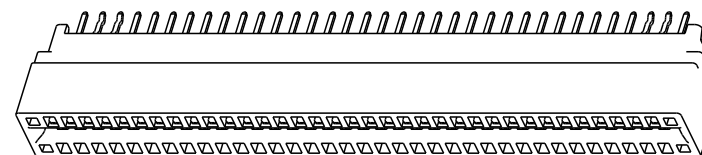
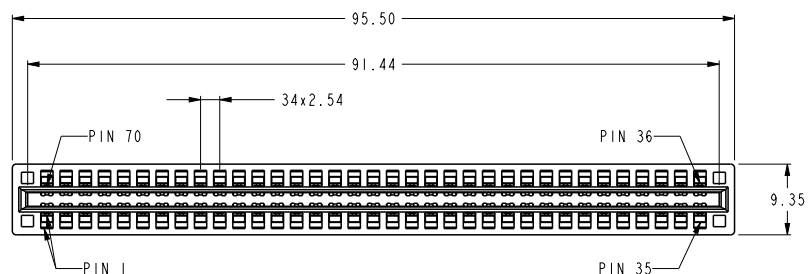
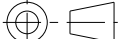


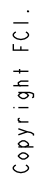
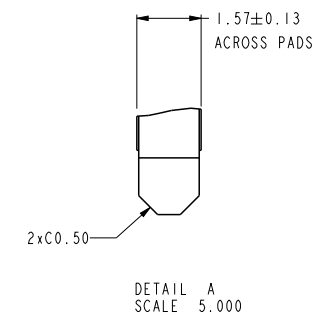
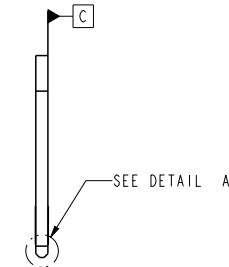





PRODUCT NO  
10046971-056LF



- NOTES:
1. Material:  
HOUSING: HIGH TEMPERATURE THERMOPLASTIC,  
UL 94 V-0 FLAME RETARDANT.  
TERMINAL: HIGH CONDUCTIVITY COPPER ALLOY.
  2. PACKING SPEC. GS-14-937
  3. PRODUCT SPEC. GS-12-338.
  4. MANUFACTURER'S NAME, P/N AND DATE CODE  
TO APPEAR ON THIS SURFACE AS PER GS-24-007.

spec ref *				dr		Hai-Ling Liu		2015/12/01		projection				MM		size		A4		scale		1.000													
tolerance std				TOLERANCES UNLESS OTHERWISE SPECIFIED				eng		Sunny2 Liu		2016/01/04				ecn no		-																	
				chr				Terris Liu		2016/01/04		product family				rel level						Released													
				appr				Pei-Ming Zheng		2016/01/04																									
surface				linear				0.X				±0.50								POWER EDGE CARD VERT				dwg no				10046971-056				rev		A	
				0.XX				±0.25																											
				0.XXX				±0.10																											
				angular				0°				±2°				www.fci.com				cat. no.				*				Product - Customer Drw				sheet 1 of 2			



dr	Hai-Ling Liu	2015/12/01	<div>projection</div> <div></div>	<div>MM</div> <div></div>	size	A4	scale	1.000			
eng	Sunny2 Liu	2016/01/04			ecn no	-					
chr	Terris Liu	2016/01/04			rel level	Released					
appr	Pei-Ming Zheng	2016/01/04			product family						
<div></div>		title			POWER EDGE CARD VERT		dwg no		10046971-056	rev	A
www.fci.com		cat. no.			*	Product - Customer Drw			sheet 2 of 2		