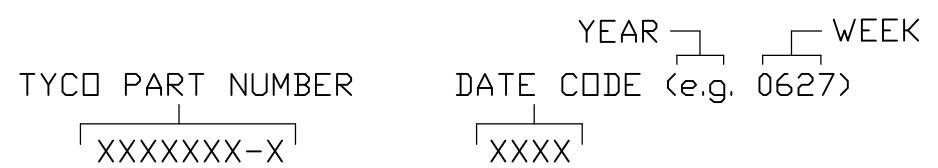


THIS DRAWING IS UNPUBLISHED. RELEASED FOR PUBLICATION
 © COPYRIGHT 2006 BY TYCO ELECTRONICS CORPORATION. ALL RIGHTS RESERVED.

| LOC | DIST | REVISIONS | | | | | |
|-----|------|-----------|-----|-------------|-----------|-----|------|
| GP | 00 | P | LTR | DESCRIPTION | DATE | DWN | APVD |
| | | | A | NEW RELEASE | 30AUG2006 | GIP | D.O. |

- 7. CONTACTS PURCHASED SEPARATELY.
- 6. ELCON EQUIVALENT SERIES 291-10-01100.
- 5. ITEMS PROVIDED TO THIS SPECIFICATION TO BE PERMANENTLY IDENTIFIED PER THE FOLLOWING IDENTIFIER:



- 4. A REFERENCE DIMENSION (X.XX) IS WITHOUT TOLERANCE AND USED FOR INFORMATION ONLY.
- 3. FINISHES:
RETENTION CLIPS: BRITE DIP PICKLED PER INDUSTRY STANDARDS.
- 2. MATERIALS:
INSULATORS: THERMOPLASTIC, GLASS REINFORCED, UL94V-0 FLAMMABILITY RATED, COLOR-BLACK.
RETENTION CLIPS: COPPER OR STAINLESS STEEL.
- 1. PART NUMBER CHANGES AND OR DESIGN CHANGES AFFECTING ITEM INTERCHANGEABILITY REQUIRE PRIOR TYCO APPROVAL AND AUTHORIZATION BY REVISION TO THIS DRAWING.

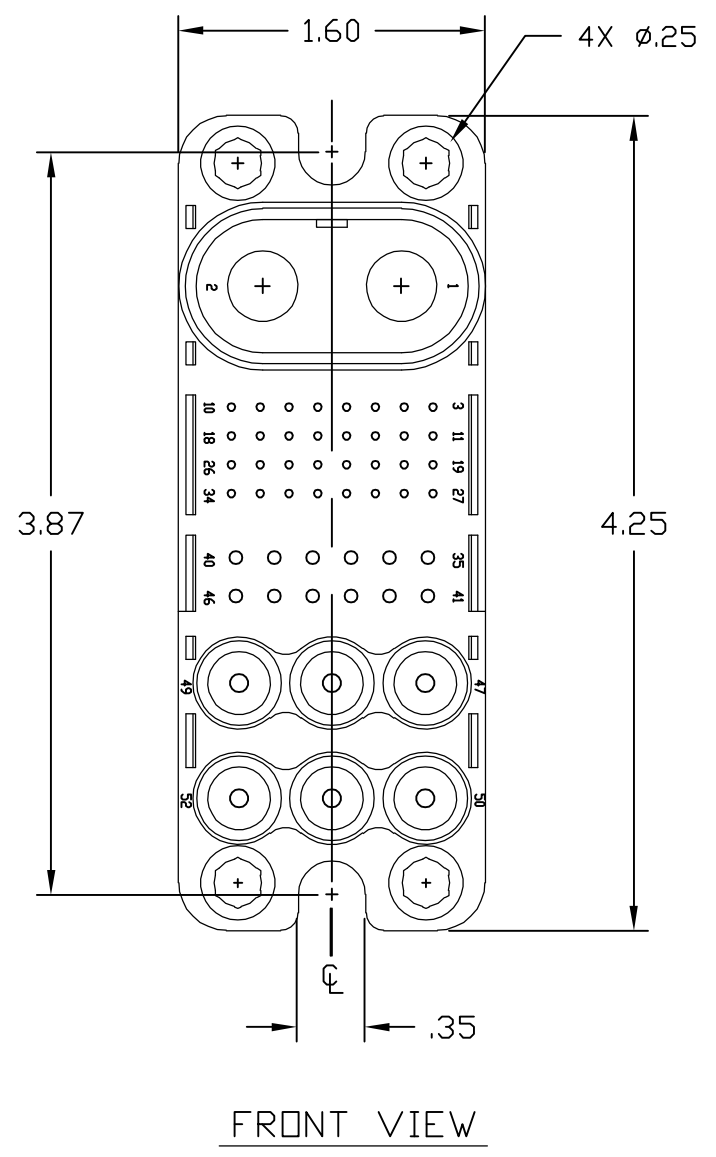
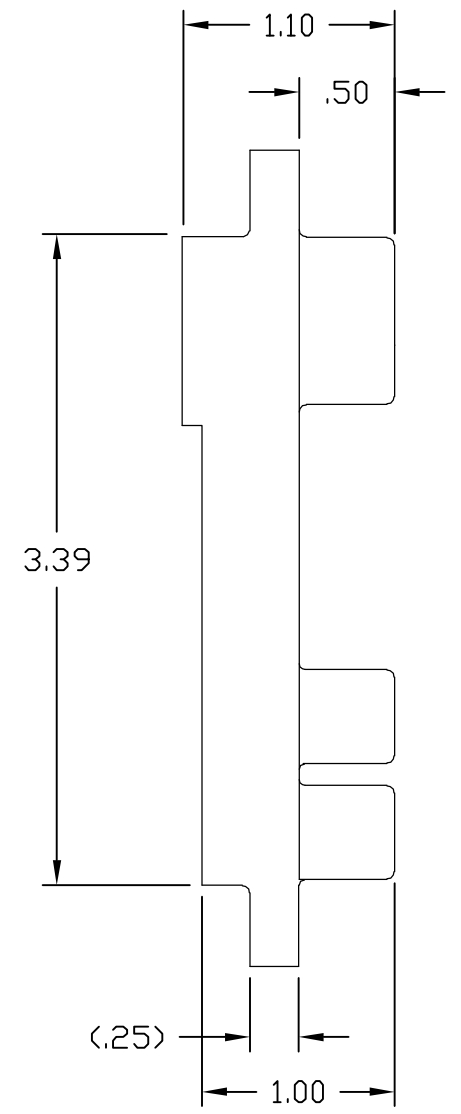
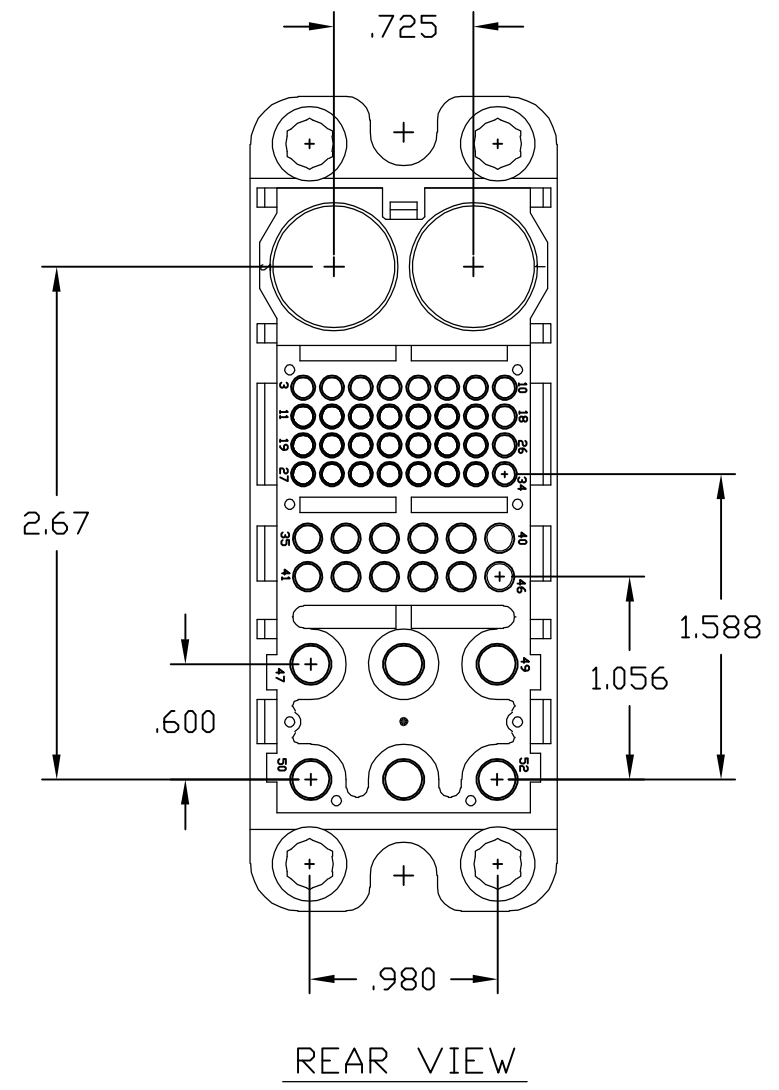
NOTES: UNLESS OTHERWISE SPECIFIED

PART NUMBER
1648185-1

| | | | | | | | | | | | | | |
|--|--|--|-----------|---|--|------------------|--|-------|-----------|------------|---------------|-----|---|
| THIS DRAWING IS A CONTROLLED DOCUMENT. | | DWN G.PETERS | 30AUG2006 | Tyco Electronics Corporation Harrisburg, PA 17105-3608 | | | | | | | | | |
| DIMENSIONS: INCHES | | CHK D.ORRIS | 30AUG2006 | | | | | | | | | | |
| | | TOLERANCES UNLESS OTHERWISE SPECIFIED: | | NAME | | | | | | | | | |
| | | 0 PLC ± - 1 PLC ± - 2 PLC ± .02[.3] 3 PLC ± .010[.25] 4 PLC ± - ANGLES ± .5 | | CONNECTOR, PIN TOP DRAWER | | | | | | | | | |
| MATERIAL | | FINISH | | PRODUCT SPEC | | APPLICATION SPEC | | SIZE | CAGE CODE | DRAWING NO | RESTRICTED TO | | |
| - | | - | | - | | - | | A3 | 00779 | C-1648185 | - | | |
| CUSTOMER DRAWING | | | | | | | | SCALE | 1:1 | SHEET | 1 OF 2 | REV | A |

THIS DRAWING IS UNPUBLISHED. RELEASED FOR PUBLICATION
 © COPYRIGHT 2006 BY TYCO ELECTRONICS CORPORATION. ALL RIGHTS RESERVED.

| LOC | DIST | REVISIONS | | | | | |
|-----|------|-----------|-----|-------------|------|-----|------|
| GP | 00 | P | LTR | DESCRIPTION | DATE | DWN | APVD |
| | | - | | SEE SHEET 1 | - | - | - |



| | | | | | |
|--|--|----------------------|-----------|---|---------------|
| THIS DRAWING IS A CONTROLLED DOCUMENT. | | DWN G.PETERS | 30AUG2006 | Tyco Electronics Corporation Harrisburg, PA 17105-3608 | |
| DIMENSIONS: INCHES | | CHK D.ORRIS | 30AUG2006 | | |
| | | APVD S.FLICKINGER | 30AUG2006 | NAME -CONNECTOR, PIN TOP DRAWER | |
| TOLERANCES UNLESS OTHERWISE SPECIFIED: | | PRODUCT SPEC | | - | |
| 0 PLC ± - 1 PLC ± - 2 PLC ± .02[.3] 3 PLC ± .010[.25] 4 PLC ± - ANGLES ± .5 | | APPLICATION SPEC | | - | |
| MATERIAL | | WEIGHT | | SIZE | RESTRICTED TO |
| - | | - | | A3 | - |
| FINISH | | CUSTOMER DRAWING | | CAGE CODE | DRAWING NO |
| - | | - | | 00779 | C-1648185 |
| | | SCALE | | SHEET | REV |
| | | 1:1 | | 2 OF 2 | A |