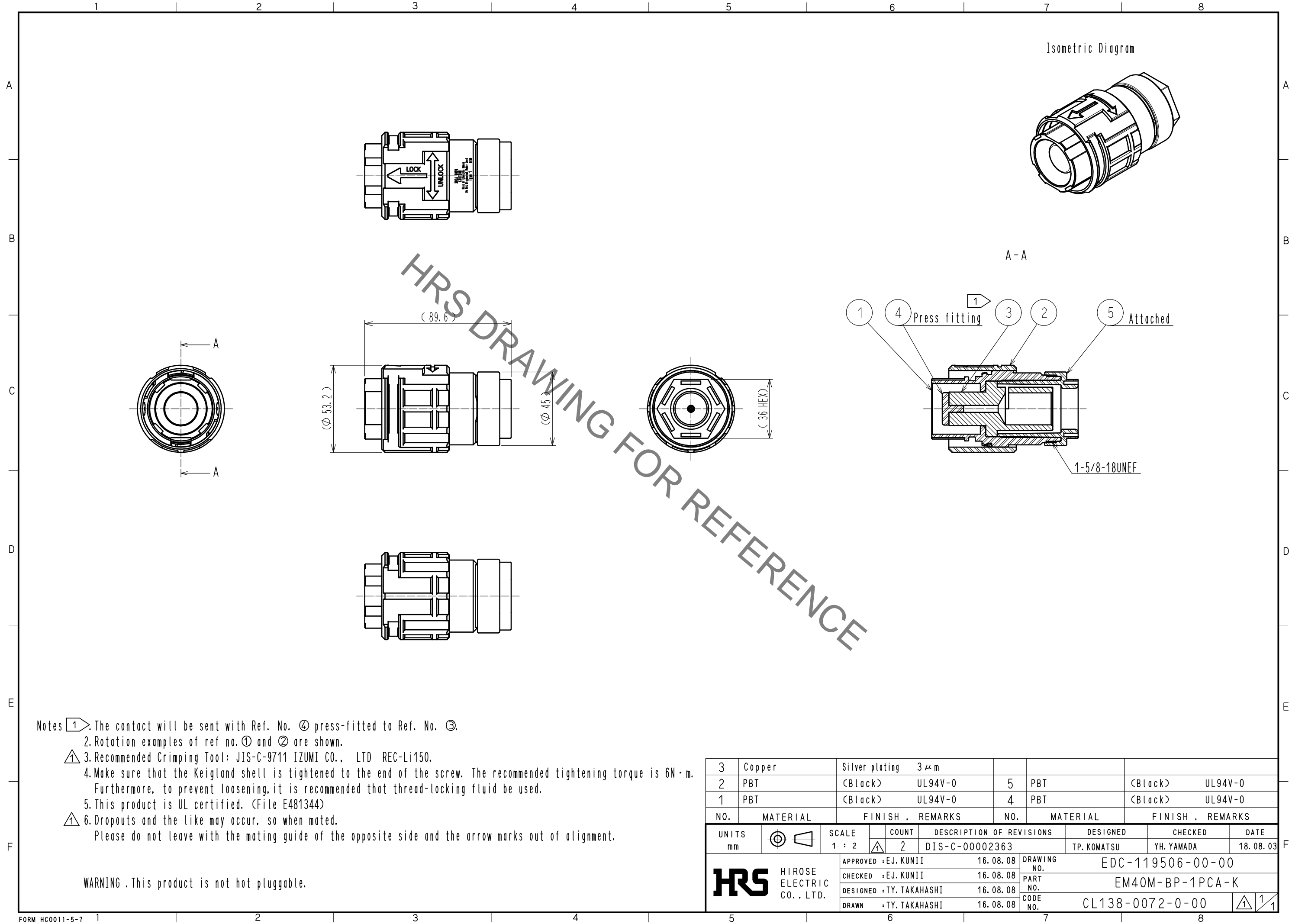
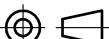





Jan.1.2022 Copyright 2022 HIROSE ELECTRIC CO., LTD. All Rights Reserved.  
In case of consideration for using Automotive equipment / device which demand high reliability, kindly contact our sales window correspondents.



- Notes ① The contact will be sent with Ref. No. ④ press-fitted to Ref. No. ③.  
2. Rotation examples of ref no. ① and ② are shown.  
③ Recommended Crimping Tool: JIS-C-9711 IZUMI CO., LTD REC-Li150.  
4. Make sure that the Keigland shell is tightened to the end of the screw. The recommended tightening torque is 6N・m.  
Furthermore, to prevent loosening, it is recommended that thread-locking fluid be used.  
5. This product is UL certified. (File E481344)  
④ 6. Dropouts and the like may occur, so when mated,  
Please do not leave with the mating guide of the opposite side and the arrow marks out of alignment.

WARNING . This product is not hot pluggable.

3	Copper	Silver plating	3μm					
2	PBT	(Black)	UL94V-0	5	PBT	(Black)	UL94V-0	
1	PBT	(Black)	UL94V-0	4	PBT	(Black)	UL94V-0	
NO.	MATERIAL	FINISH , REMARKS		NO.	MATERIAL	FINISH , REMARKS		
UNITS mm		SCALE 1 : 2	 COUNT 2	DESCRIPTION OF REVISIONS DIS-C-00002363		DESIGNED TP. KOMATSU	CHECKED YH. YAMADA	DATE 18. 08. 03
 HIROSE ELECTRIC CO., LTD.		APPROVED : EJ. KUNII		16. 08. 08		DRAWING NO. EDC-119506-00-00		
		CHECKED : EJ. KUNII		16. 08. 08		PART NO. EM40M-BP-1PCA-K		
		DESIGNED : TY. TAKAHASHI		16. 08. 08		CODE NO. CL138-0072-0-00		
		DRAWN : TY. TAKAHASHI		16. 08. 08		 1		
								1